

## 23-24 Hairpin Lace Scarf



### Suggested yarn:

• Pierrot Yarns Kirakira Tape [95% rayon, 5% polyester; 131 yds/120m per 1.41 oz./40g skein]; color #361 white, 1 skein [40g] - *discontinued; please choose appropriate substitute*

### Tools/Notions:

- 2.5mm (approx. US B or C) crochet hook or size necessary to achieve gauge
- hairpin lace tool

### Finished measurements:

- width 12cm/4.72"
- length 125cm/49.21"

### Gauge:

- pattern stitch: 26 rows = 10cm/4" long
- panel width = 6cm/2.36"

*Gauge may vary according to individual crochet style. Change hook size if necessary to achieve gauge. Alternatively, rework pattern with your own gauge measurements.*

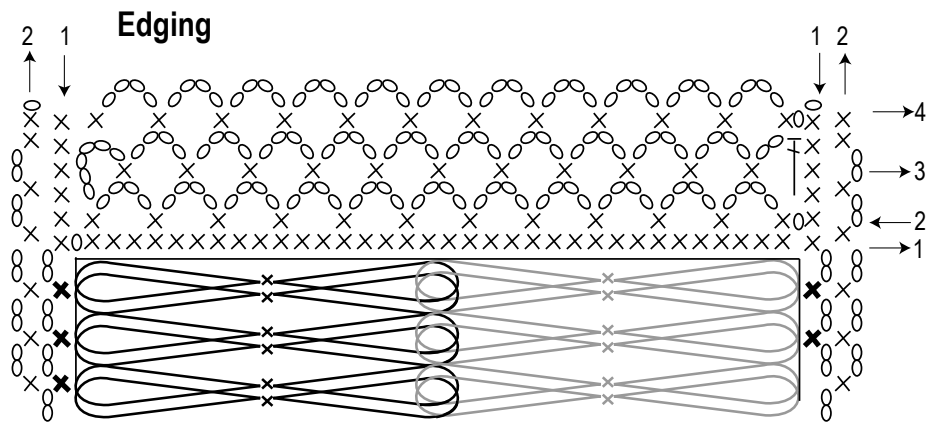
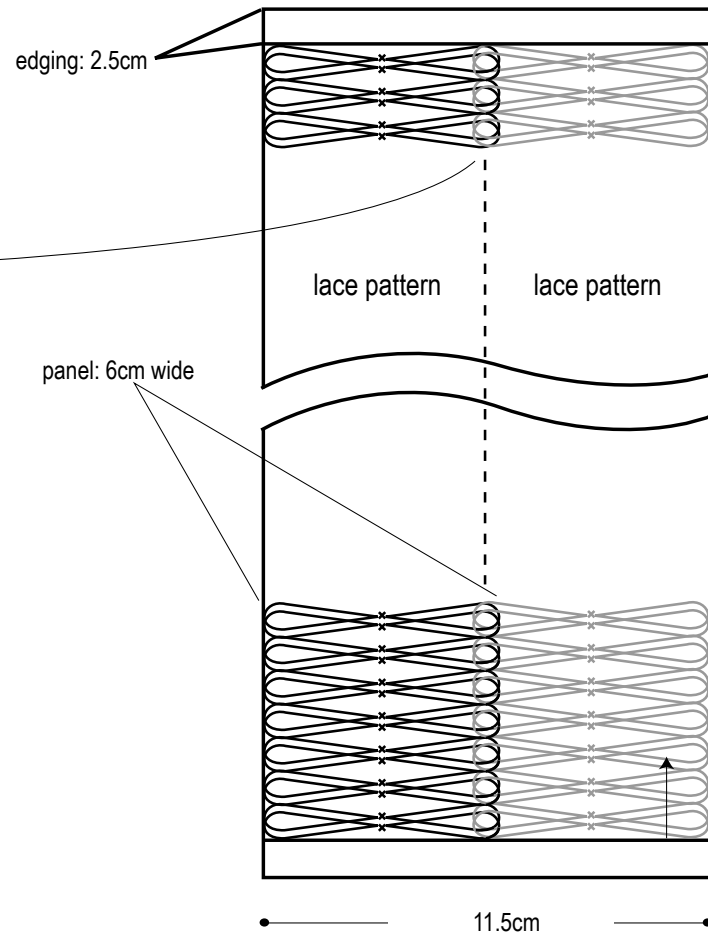
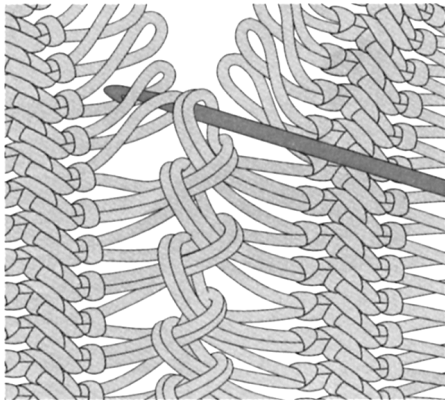
### Crochet Tips

Using hairpin lace tool, make 2 panels, each 6cm/2.36" wide and 120cm/47.24" long. Align the two panels and join together by working single crochet (US) edging around entire outer edge.

As hairpin lace is made from modified single crochet (US) stitches - a basic crochet stitch - it is simple, easy-to-do lacework.

### Abbreviations:

sc = single crochet (US)



X = Work sc around loops at ends of panel (thus securing them).