

# 28-27 Saratto Cotton Sweater



## Suggested yarn:

- Pierrot Yarns Saratto Cotton [88% cotton, 12% silk; 569 yds/520m per 3.53 oz./100g cone];
  - color #21 light beige, 2 cones [180g]
  - color #34 light saxe blue, 2 cones [180g]

## Tools/Notions:

- 2.3 (approx. US B) and 2.5mm (approx. US B or C) crochet hooks or sizes necessary to achieve gauge

## Finished measurements:

- bust 94cm/37.01"
- cross back width 37cm/14.57"
- length 56.5cm/22.24"
- sleeve length 42.5cm/16.73"

## Gauge (10cm/4" square):

- pattern stitch: 20 sts and 11 rows

*Gauge may vary according to individual crochet style. Change hook size if necessary to achieve gauge. Alternatively, rework pattern with your own gauge measurements.*

## Crochet Tips

**Body and sleeves:** Chain to create foundation row and, working into bottom loops of chain, begin working in pattern stitch. For body, work first 12 rows narrower to allow for side slit; on row 13, increase to full garment width. To shape waist, change hook size to alter gauge.

**Finishing:** Seam shoulders with alternating slip stitch/chain seam. Seam sides and sleeve undersides with alternating slip stitch/chain seam. Attach sleeves to body with alternating slip stitch/chain seam. Work edging along hem, side slits, neckline, and cuffs. Referring to schematics, crochet corsage.

※Entire garment worked with 1 strand of each yarn (#21 light beige and #34 light saxe blue) held together.

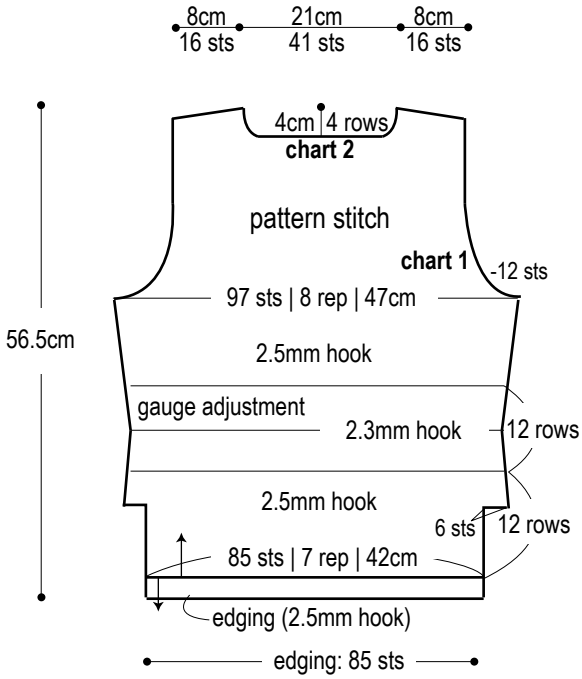
## Abbreviations:

ch = chain

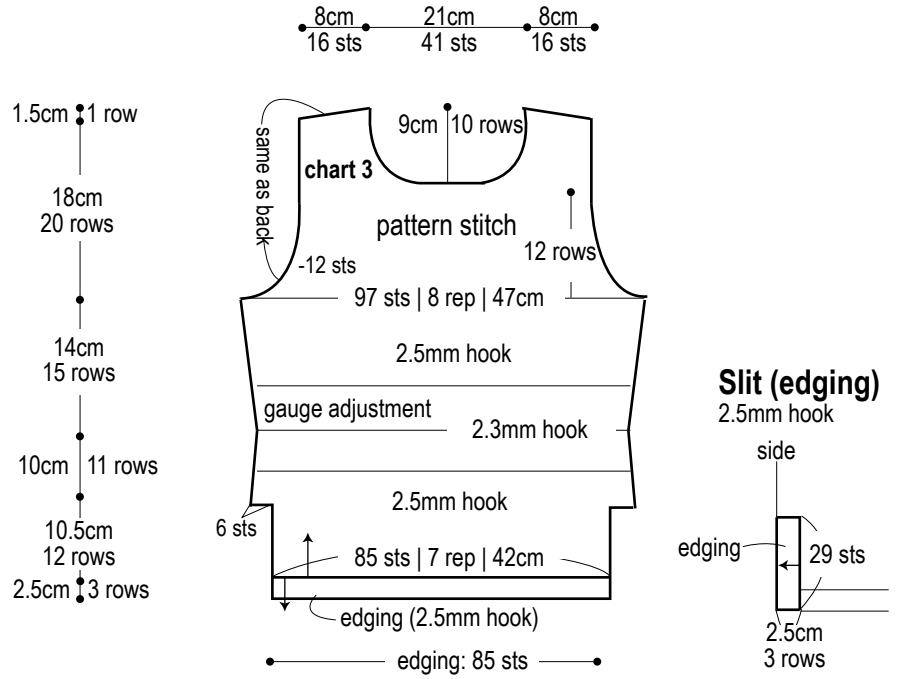
m - magic ring

rep = pattern repeat(s)

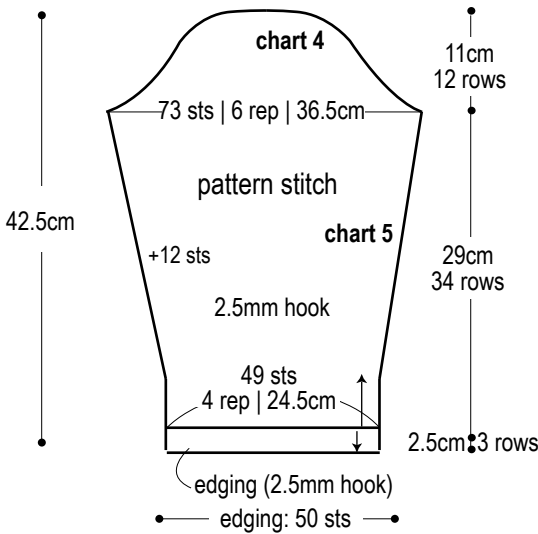
### Back



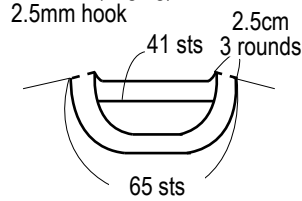
### Front



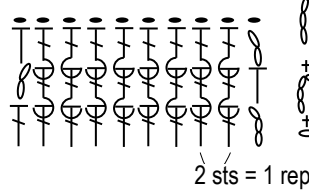
### Sleeve



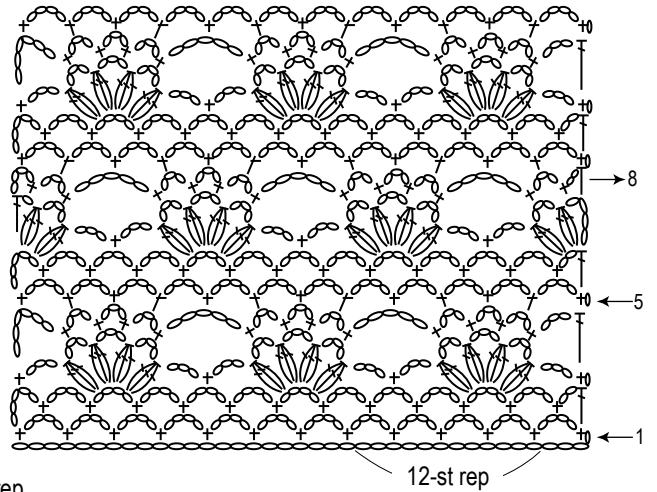
### Collar (edging)



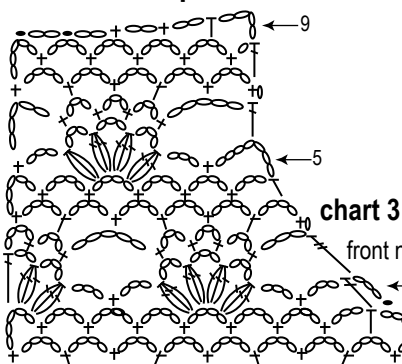
### Edging (2.5mm hook)



### Pattern stitch (2.5mm hook)



### Shoulder slope



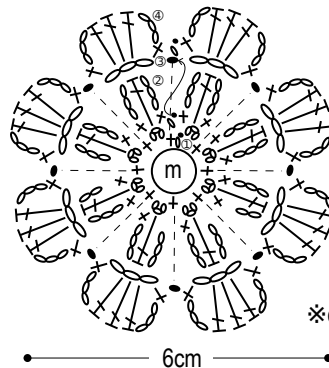
### motif C



3.5cm

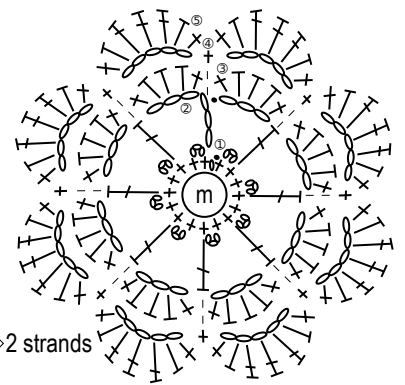
※Use 2 strands of color #34.

### motif B

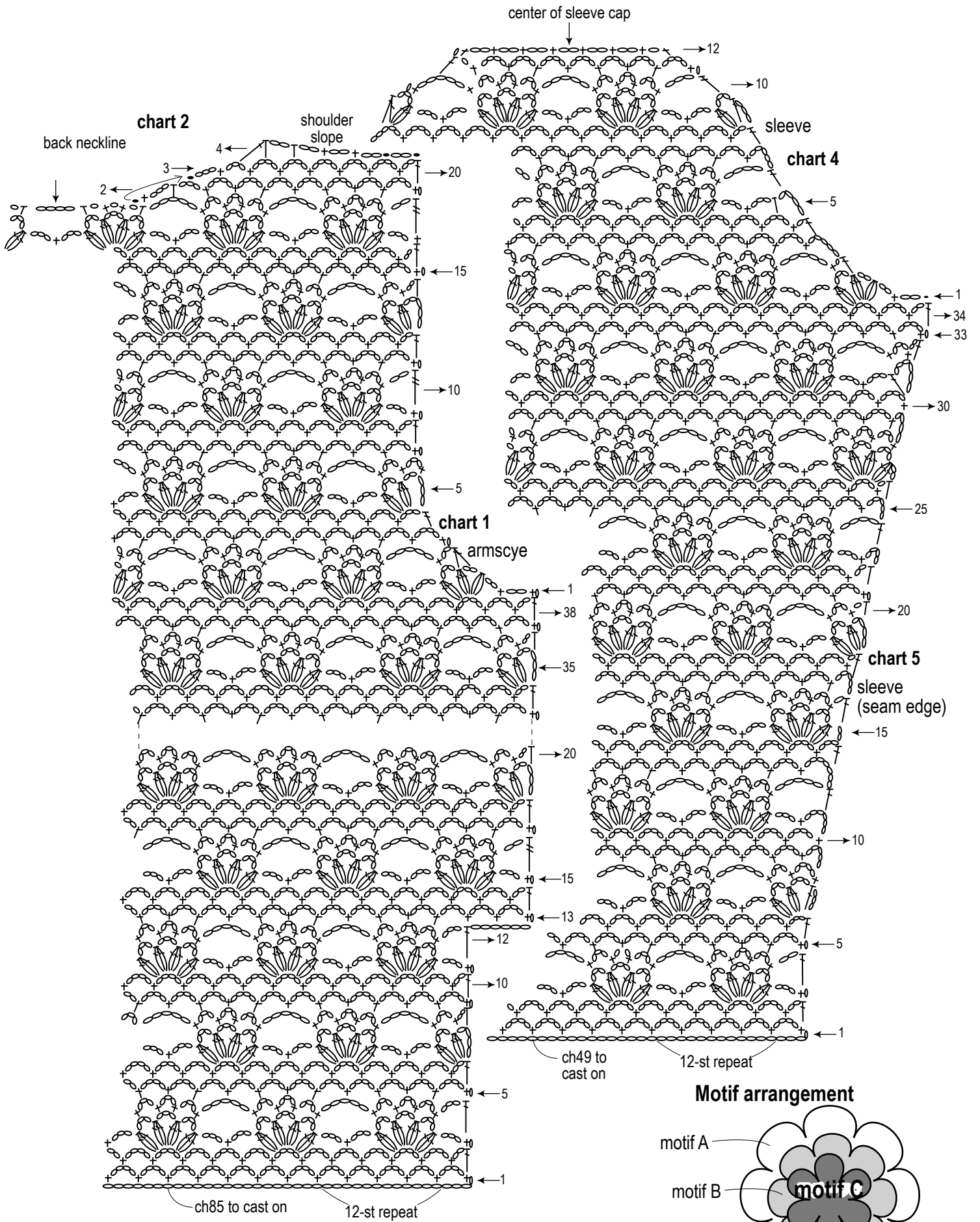


※color #34  
color #21 > 2 strands

### motif A



※Use 2 strands of color #21.



※Layer motifs A, B, and C and seam together.