

67-3 Cabled Scarf



Suggested yarn:

- Pierrot Yarns Junmo Namibuto2 [100% superwash wool; 79 yds/72m per 1.41 oz./40g skein]; color #29 deep beige, 4 skeins [160g]

Tools/Notions:

- 5.1mm (approx. US 8) knitting needles or size necessary to achieve gauge
- cable needle

Finished measurements:

- width 17cm/6.69"
- length 160cm/62.99"

Gauge (10cm/4" square):

- pattern stitch: 23.5 sts and 22 rows

Gauge may vary according to individual knitting style. Change needle size if necessary to achieve gauge. Alternatively, rework pattern with your own gauge measurements.

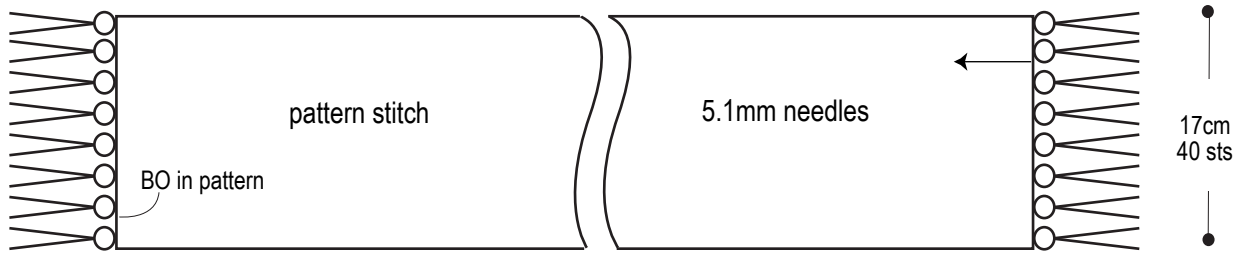
Knitting Tips

Cast on with long-tail cast-on and work in pattern stitch according to chart. When finished, bind off in pattern. Attach fringe in 8 places at each end of scarf.

Abbreviations:

BO = bind off

CO = cast on

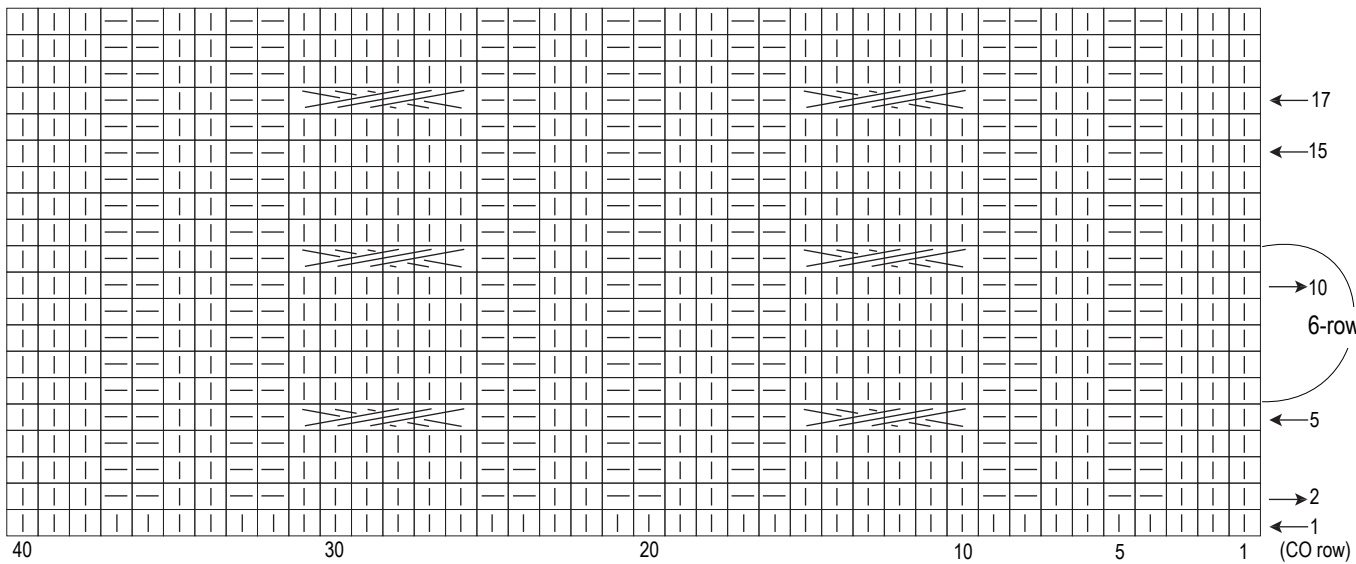



● 9cm ● ————— 142cm | 314 rows ————— ● 9cm ●

★Fringe instructions:
 Fold 3 strands (each 23cm/??" long) in half;
 attach in 8 places on each end as indicated.

Pattern stitch

☐ = knit ☐ = purl



 = C6B (cable 6 back):
 slip 3 stitches to cable
 needle and hold in back of
 work, k3 from left needle,
 k3 from cable needle