

211-20h Ramie 100 Dolman Sweater



Suggested yarn:

- Pierrot Yarns Ramie 100 [100% ramie; 109 yds/100m per 1.41 oz./40g skein]; color #14 purple, 10 skeins [380g]

Tools/Notions:

- 3.3mm (approx. US 3) knitting needles or size necessary to achieve gauge
- 2.3mm (approx. US B) crochet hook or size necessary to achieve gauge

Finished measurements:

- center back neck-to-cuff 60cm/23.62"
- length 56cm/22.05"

Gauge (10cm/4" square):

- pattern stitch: 20 sts and 24 rows

Gauge may vary according to individual knitting style. Change needle size if necessary to achieve gauge. Alternatively, rework pattern with your own gauge measurements.

Knitting Tips

Back/front/sleeves: Cast on with long-tail cast-on and work in pattern stitch. Use lifted increase for side increases. Make 2 (front and back).

Finishing: Seam shoulders with three-needle bind-off. Seam sides with mattress stitch. Work crochet edging in the round at cuffs and collar.

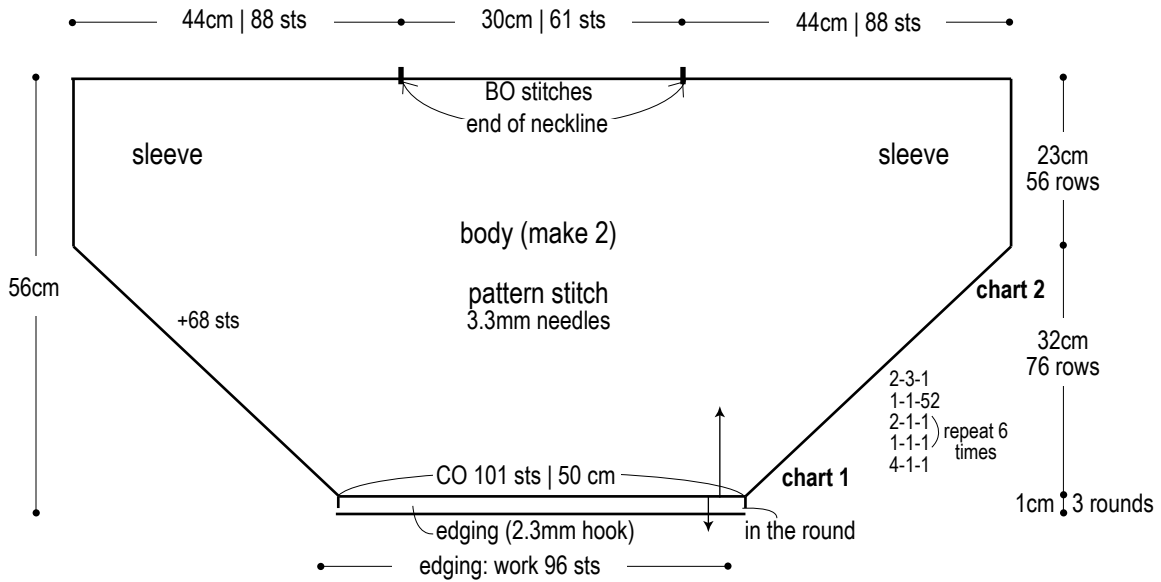
Abbreviations:

BO = bind off

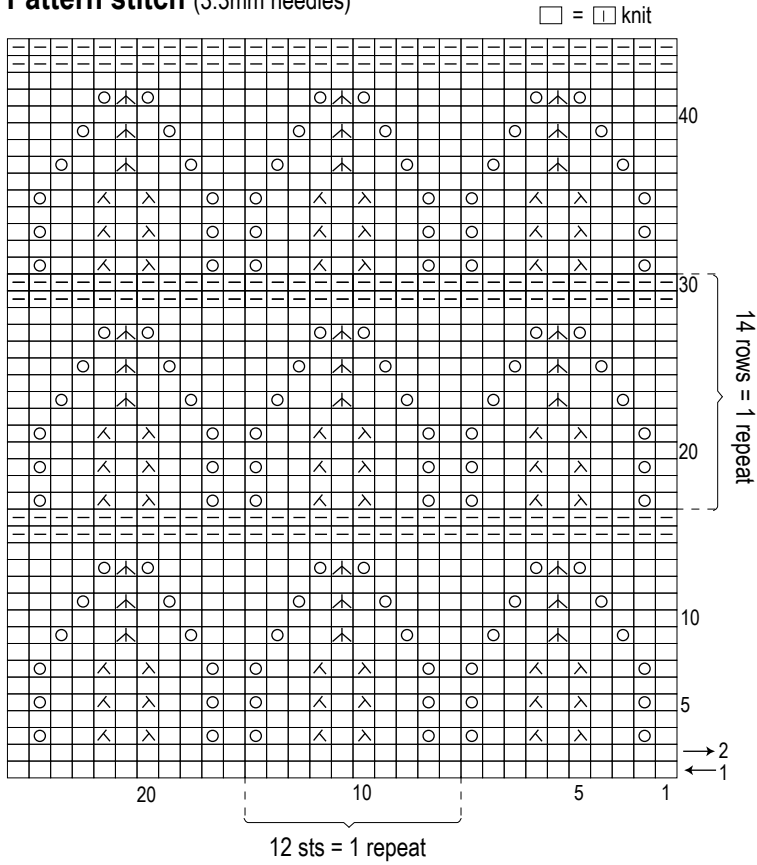
CO = cast on

= rows-stitches-times

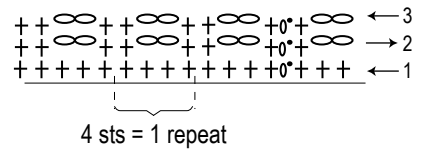
Dolman-sleeve sweater (front and back)

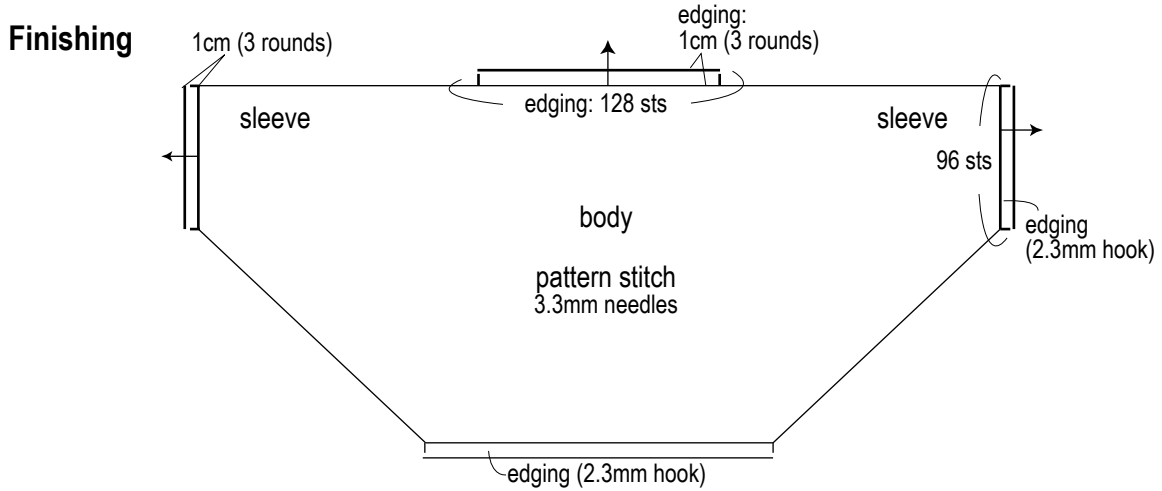


Pattern stitch (3.3mm needles)



Edging (2.3mm hook)





Side increases

3.3mm needles

□ = □ knit

