

210-7 Silk Sweater



Suggested yarn:

- Pierrot Yarns Silk100 Sport [100% silk; 169 yds/155m per 1.76 oz./50g cone]; color #9110 pale light pink, 4 cones [195g]
- Pierrot Yarns Kirara [89% acetate, 11% polyester; 1892 yds/1730m per 1.76 oz./50g cone]; color #4806 brown/gold lamé, 1 cone [20g]

Tools/Notions:

- 3.6mm (approx. US 4) knitting needles or size necessary to achieve gauge
- 2.5mm (approx. US B) crochet hook or size necessary to achieve gauge
- 1 button (15mm/0.59")

Finished measurements:

- bust 94cm/37.01"
- cross back width 35.5cm/13.98"
- length 57.5cm/22.64"
- sleeve length 20.5cm/8.07"

Gauge (10cm/4" square):

- stockinette stitch: 21.5 sts and 28 rows
- pattern stitch: 21 sts and 28 rows

Gauge may vary according to individual knitting style. Change needle size if necessary to achieve gauge. Alternatively, rework pattern with your own gauge measurements.

Knitting Tips

Body, sleeves: Cast on with long-tail cast-on and work in stockinette stitch. Continue in pattern stitch. For front body, bind off 1 stitch at neck slit, then begin working right and left sides separately.

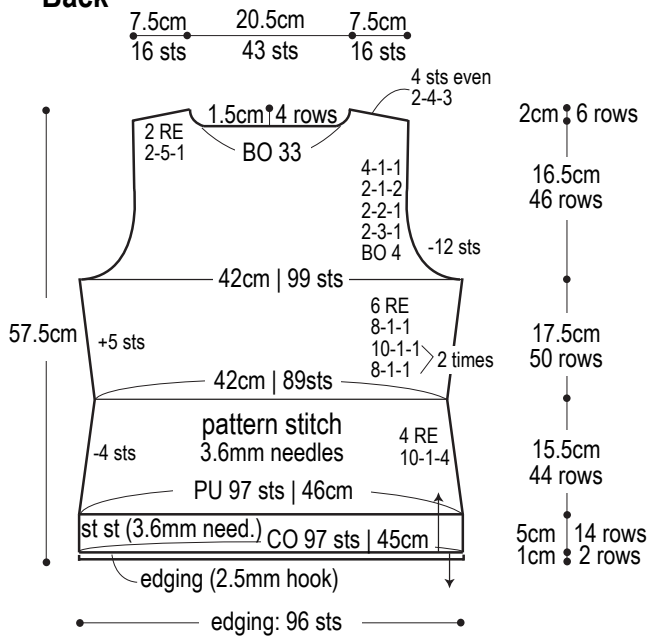
Finishing: Seam shoulders with three-needle bind-off. Seam sides and sleeve undersides with mattress stitch. Work edging in the round along hem and cuffs. Work edging around neckline and edges of neck slit; work button loop and attach where indicated. Join sleeves to body with slip stitch seam. Attach button.

※Entire garment worked with 2 strands of yarn held together: 1 strand of Silk100 Sport and 1 strand of Kirara.

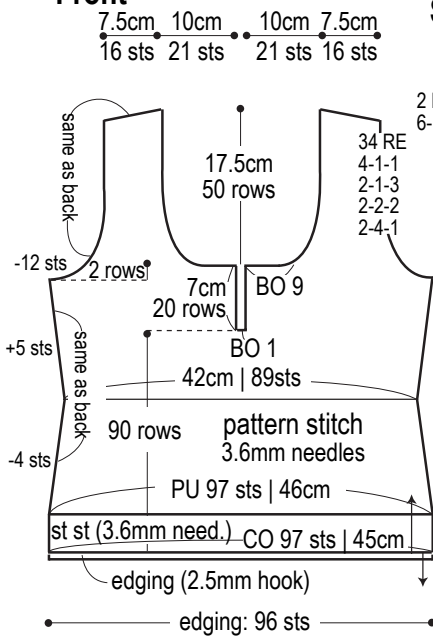
Abbreviations:

BO = bind off
ch = chain
CO = cast on
RE = row(s) even
sc = single crochet (US)
st st = stockinette stitch
= rows-stitches-times

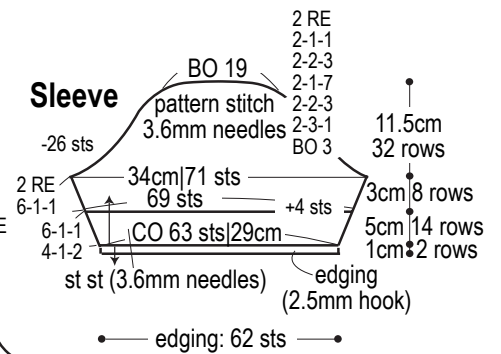
Back



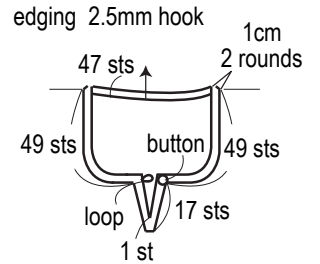
Front



Sleeve

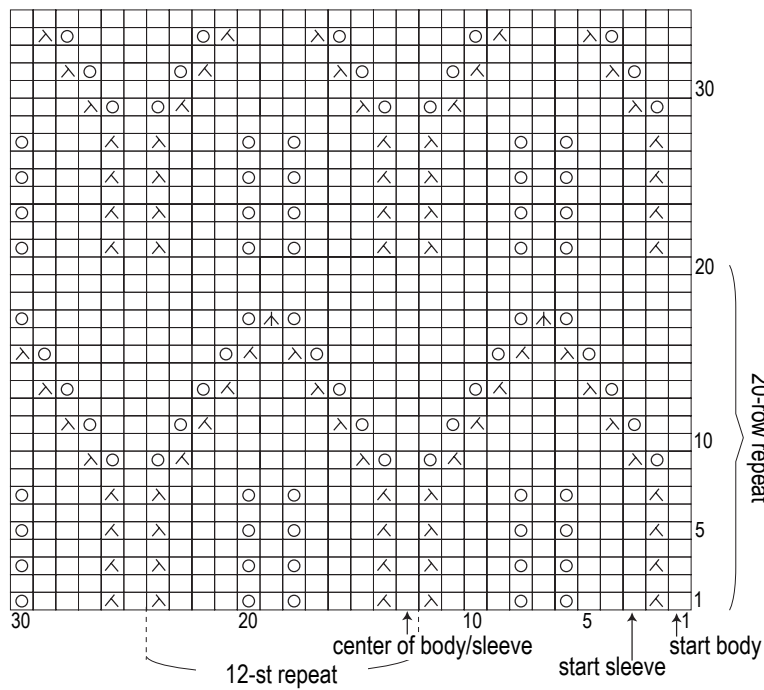


Neck slit & collar

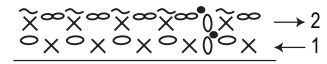


Pattern stitch (3.6mm needles)

□ = □ knit



Edging (2.5mm hook)



Neck slit edging (2.5mm hook)

