

27-28-15 Cabled Pullover

© Pierrot Yarns (Gosyo Co., Ltd.). Translation by Linda Lanz.



Materials

- Pierrot Yarns Junmo Namibuto2 [100% superwash wool; 79 yds/72m per 1.41 oz./40g skein]; color #2 ivory; 16 skeins [620g]
- 3.9mm (approx. US 6) and 4.5mm (US 7) knitting needles or sizes necessary to achieve gauge
- 3.9mm (approx. US 6) circular or double-pointed knitting needles or size necessary to achieve gauge
- cable needle

Gauge

Gauge is measured in a swatch 10cm/4" square.

- stockinette stitch: 21 sts and 28 rows
- pattern stitch: 23 sts and 28 rows

Finished measurements

- chest 109cm/42.91"
- length 63cm/24.80"
- cross back width 46.5cm/18.31"
- sleeve length 56cm/22.05"

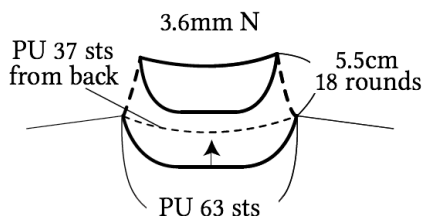
Knitting Tips

Body and sleeves: Cast on with long-tail cast-on method and begin working in k1p1 rib. Referring to schematics, work in pattern stitch and stockinette stitch. Place shoulder stitches on stitch holders, but on the last row, decrease 3 stitches within the pattern stitch section. Knit 138 rows for sleeve, shaping edges with lifted increases. Using scrap of yarn, place marker, then work 8 rows even and bind off in pattern.

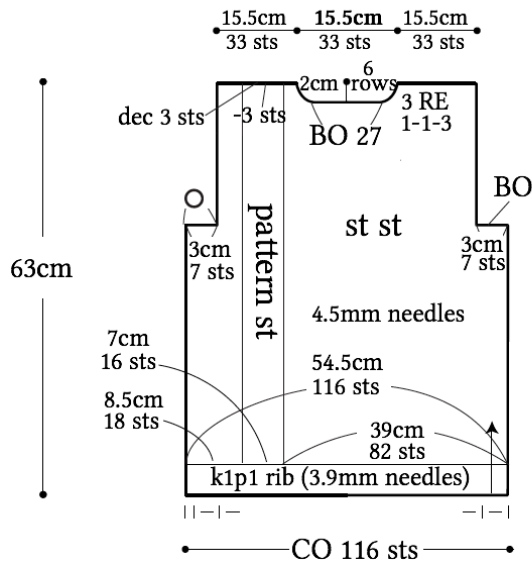
Finishing: Join shoulders with slip stitch seam. Join sides and sleeve undersides with mattress stitch. Seam sleeve notch with stitches-to-rows mattress stitch. With right sides facing, join sleeves to body with slip stitch seam.

Abbreviations: BO = bind off; CO = cast on; dec = decrease; N = needles; PU = pick up; RE = row(s) even; st st = stockinette stitch

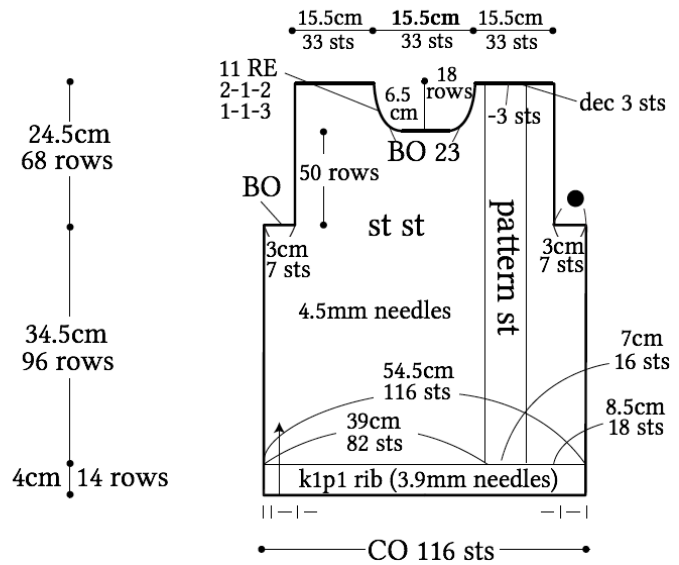
● collar (k1p1 rib)



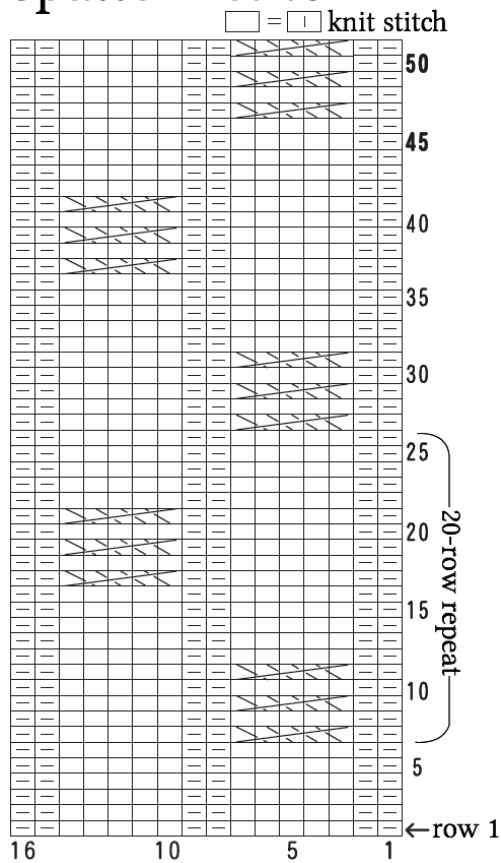
●back



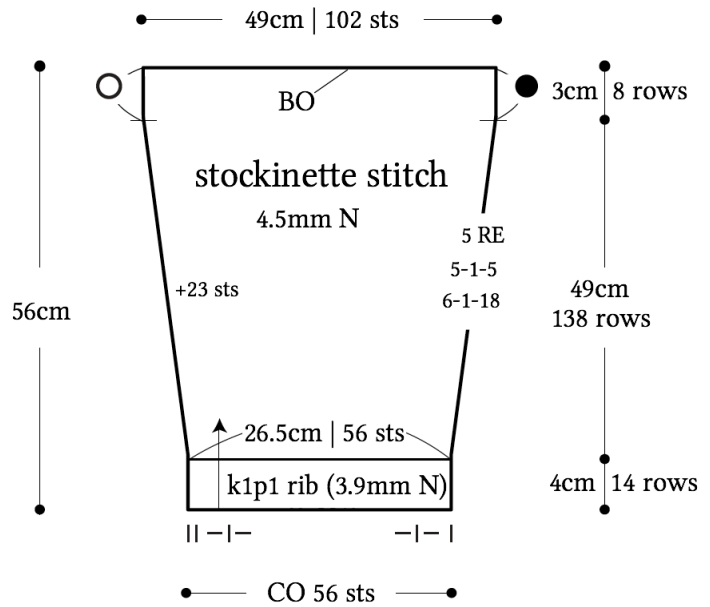
●front



●pattern stitch



●sleeve



●shoulder decreases (-3 sts)

