

23-18 Half-sleeve Sweater

© Pierrot Yarns (Gosyo Co., Ltd.). Translation by Linda Lanz.



Materials

- Pierrot Yarns Sawayaka Cotton [100% cotton; 416 yds/380m per 3.53 oz./100g cone]; color #9 cobalt blue; 5 cones [480g]
- 3.0mm (US 2½) and 3.3mm (approx. US 3) straight knitting needles or sizes necessary to achieve gauge
- 3.0mm (US 2½) circular knitting needle or size necessary to achieve gauge

Gauge

Gauge is measured in a swatch 10cm/4" square.

- pattern stitch A: 26 sts and 38 rows
- pattern stitch B: 26 sts and 30 rows

Finished measurements

- bust 90cm/35.43"
- length 52cm/20.47"
- cross back width 34cm/13.39"
- sleeve length 25cm/9.84"

Knitting Tips

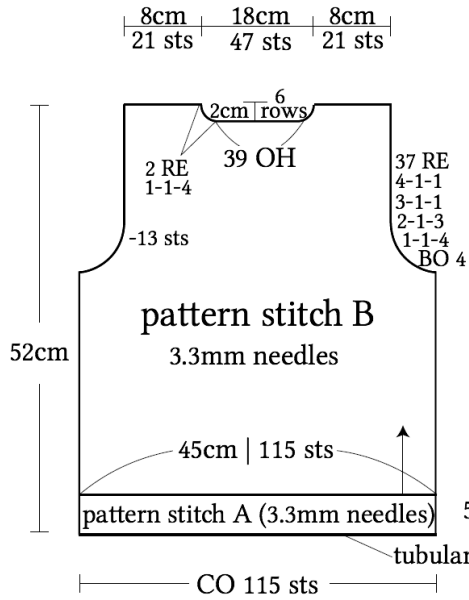
Body: Cast on with 1x1 tubular cast-on method and begin knitting. Work 22 rows of pattern stitch A, then work in pattern stitch B. Shape neckline by binding off stitches and working decreases. Leave shoulder stitches live.

Sleeves: Cast on as for body and begin knitting. Shape sleeves with lifted increases.

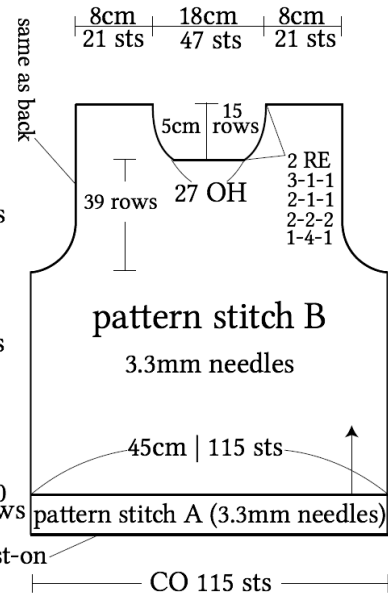
Finishing: Join shoulders with three-needle bind-off. Join sides and sleeve undersides with mattress stitch. Pick up stitches around neckline and work collar in pattern stitch A. Knit last round in k1p1 ribbing; bind off in pattern. Join sleeves to body with slip stitch seam.

Abbreviations: BO = bind off; CO = cast on; N = needle(s); OH = on hold (i.e., place on stitch holder); PU = pick up; RE = row(s) even

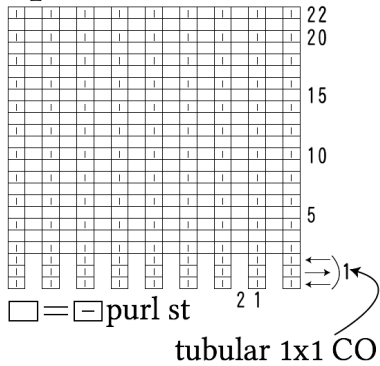
●back



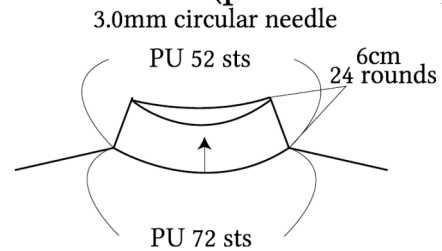
●front



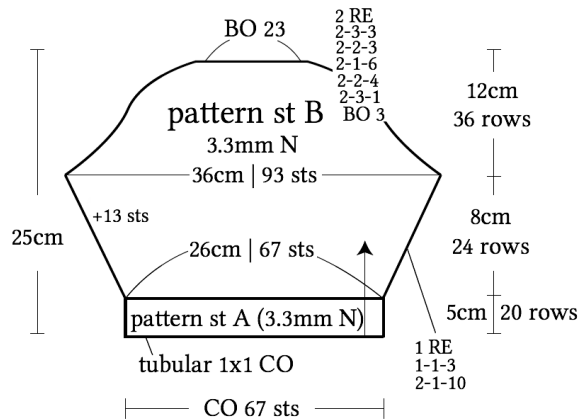
●pattern stitch A



●collar (pattern st A)



●sleeve



● pattern stitch B

