

# 210-211-21 Silk Silpalon Cardigan

© Pierrot Yarns (Gosyo Co., Ltd.). Translation by Linda Lanz.



## Materials

- Pierrot Yarns Silk Silpalon [50% silk, 50% silpalon acrylic; 273 yds/250m per 1.76oz/50g cone]; color #6102 green pearl; 6 cones [300g]
- 2.3mm (approx. US B) crochet hook or size necessary to achieve gauge
- 4 buttons (15mm / approx. 5/8")

## Gauge

Gauge measured in a swatch 10cm/4" square.

- pattern stitch A: 30 sts and 14 rows
- pattern stitch B: 21 sts and 14 rows

## Finished measurements

- bust 95.5cm/37.60"
- length 62.5cm/24.60"
- cross back width 36cm/14.17"
- sleeve length 53cm/20.87"

## Crochet Tips

**Front and back:** Chain to cast on and crochet toward shoulders in pattern stitch A. Working stitches into cast-on chain, now work downward to hem in pattern stitch B.

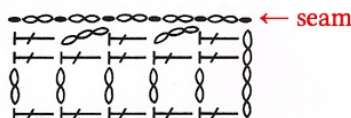
**Sleeves:** Crochet in pattern stitch A.

**Finishing:** Join shoulders with woven seam. Join sides and sleeve undersides with slip/chain seam (see below). Work edging B in the round along neckline and front edges. Work edging A in round around sleeve cuffs.

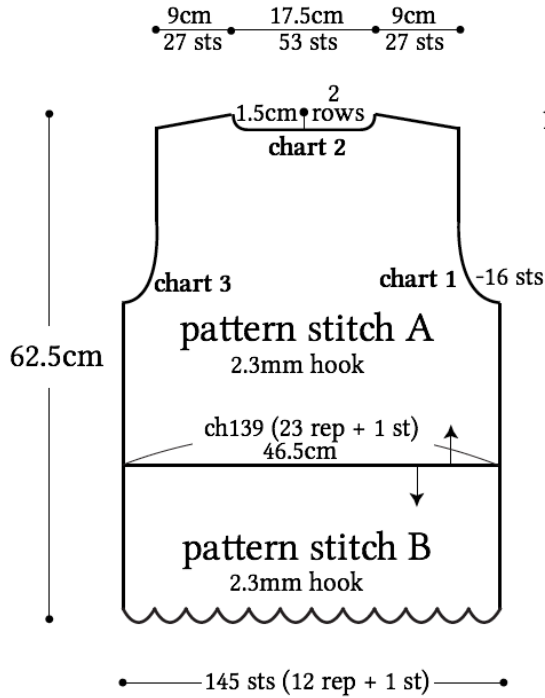
※ On rows 4 and 7 of pattern stitch B, work sc into loop of picot from previous row.

**Abbreviations:** CO = cast on; rep = repeat(s); sc = single crochet (US)

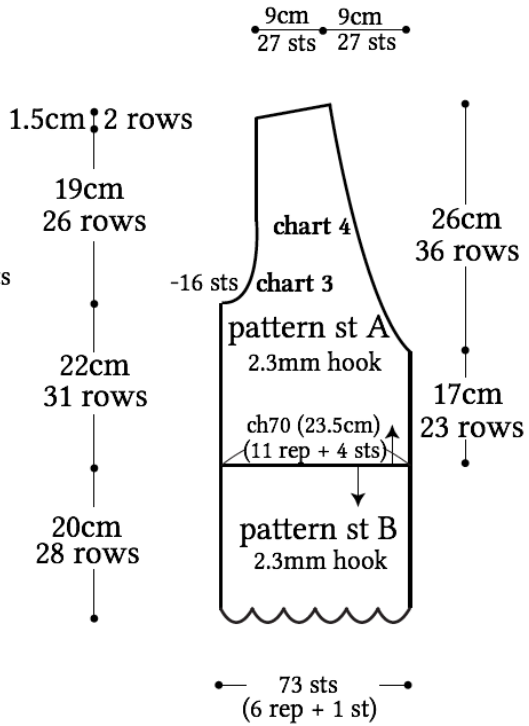
**slip/chain seam:** essentially a slip stitch seam with chain stitches interspersed between slip stitches. Sl st through one stitch in each layer. \*ch2, sl st in top of next row\*, continue from \* to \* until end.



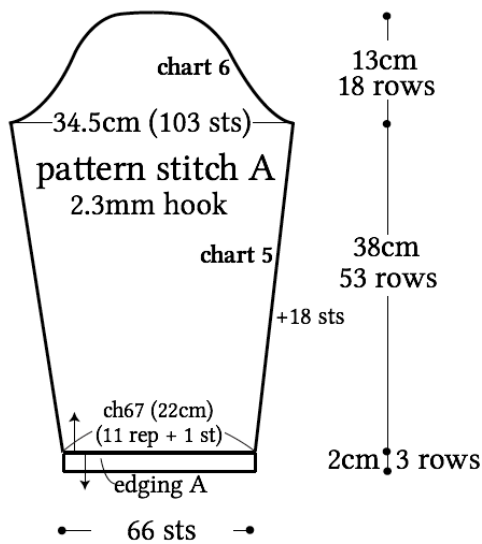
●back



●front



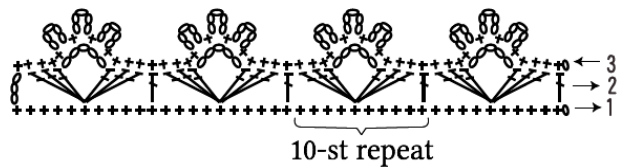
●sleeve



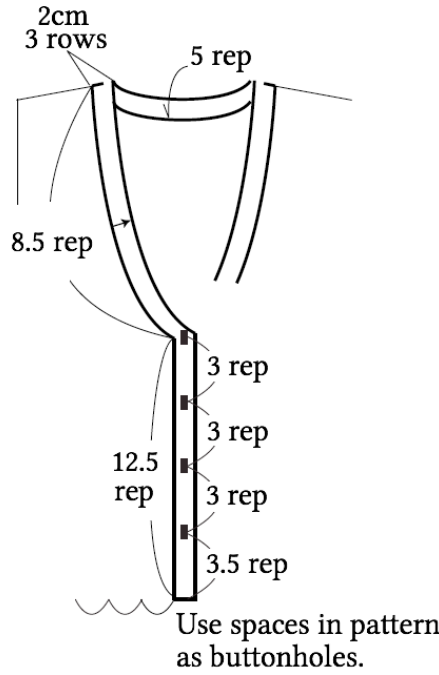
●edging A



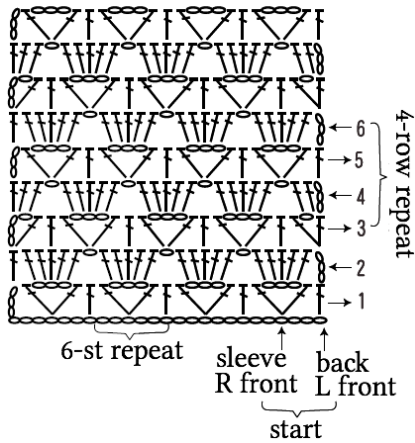
●edging B



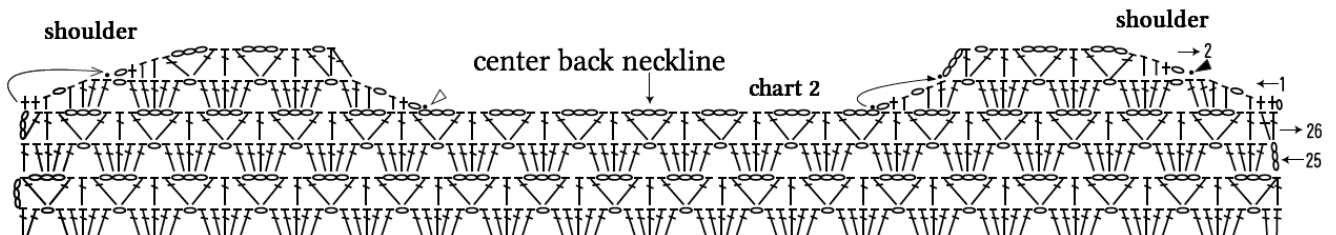
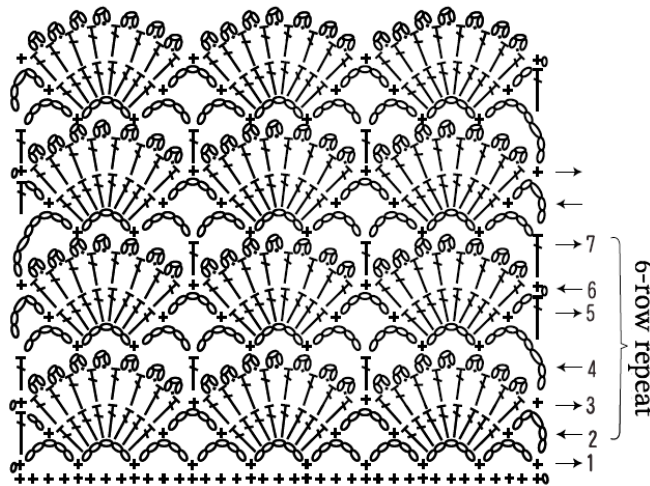
●collar, front plackets



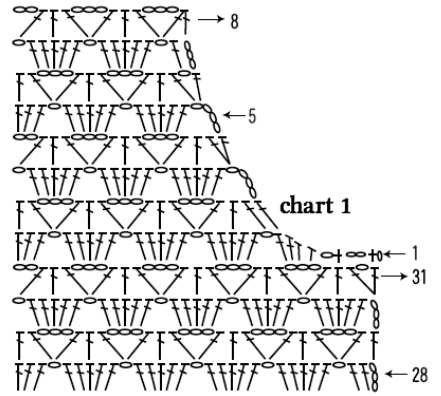
●pattern stitch A



●pattern stitch B



◁ = join yarn  
 ◀ = cut yarn



pattern stitch A

