

28-5 V-neck Sweater

© Pierrot Yarns (Gosyo Co., Ltd.). Translation by Linda Lanz.



Materials

- Pierrot Yarns Silk100 Fingering [100% silk; 344 yds/315m per 1.76 oz./50g cone]; color #6005 light baby blue; 4 cones [180g]
- Pierrot Yarns Cutie Mohair [28% kid mohair, 28% acrylic, 15% superwash wool, 30% nylon; 310yds/283m per 0.88 oz./25g skein]; color #21 ivory; 3 skeins [75g]
- 3.3mm (approx. US 3) and 3.6mm (approx. US 4 or 5) knitting needles or sizes necessary to achieve gauge
- 2.5mm (approx. US B or C) crochet hook or size necessary to achieve gauge

Gauge

- pattern stitch: 30 sts and 32 rows = 10cm/4" square

Finished measurements

- bust 92cm/36.22"
- length 55cm/21.65"
- cross back width 35cm/13.78"
- sleeve length 47.5cm/18.70"

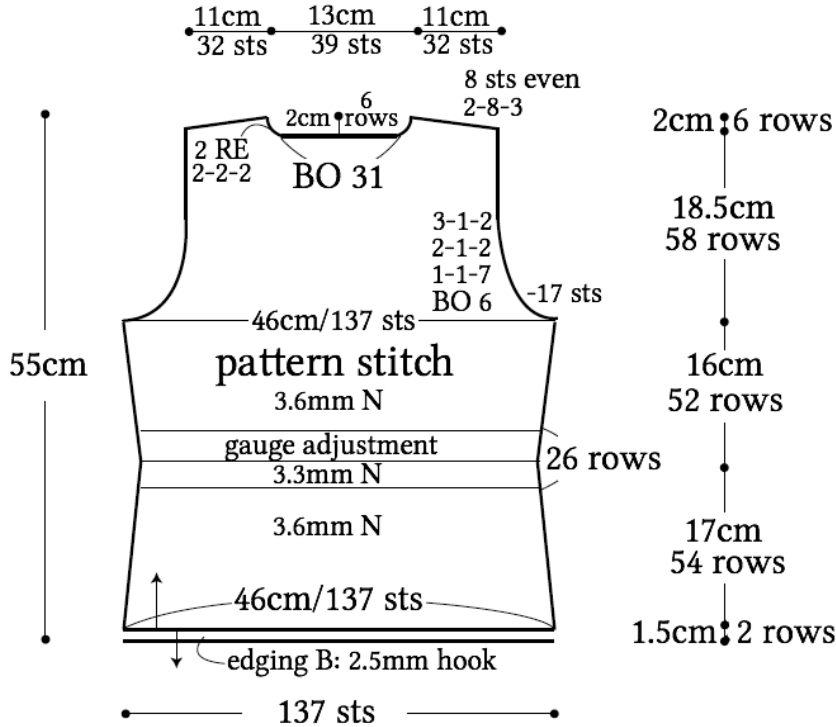
Knitting Tips

Body and sleeves: Cast on and knit in pattern stitch according to schematics. The waist shaping is achieved by altering gauge (changing needle size). Shape armholes and neckline by binding off stitches and decreasing (using k2tog at right edge and ssk at left edge). For sleeve increases, use lifted increase.

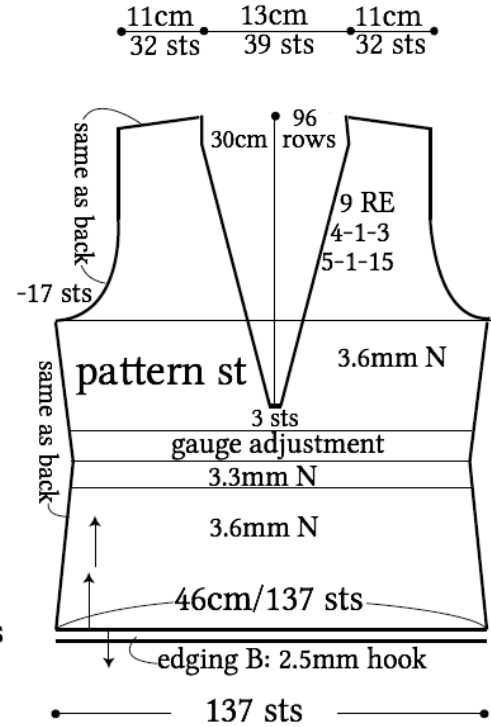
Finishing: Join shoulders with three-needle bind-off. Join sides with mattress stitch. Attach sleeves to body with slip stitch seam. Crochet edging A along neckline. Crochet edging B around hem and cuffs.

Abbreviations: BO = bind off; N = needles; RE = row(s) even

●back

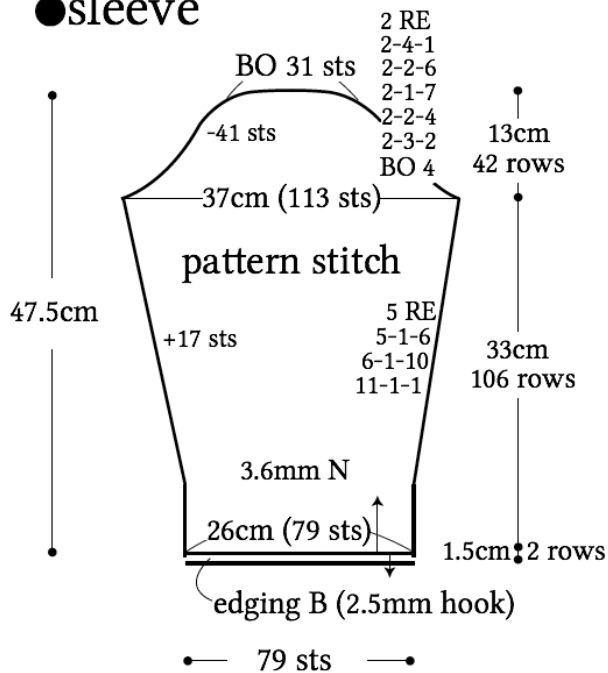


●front



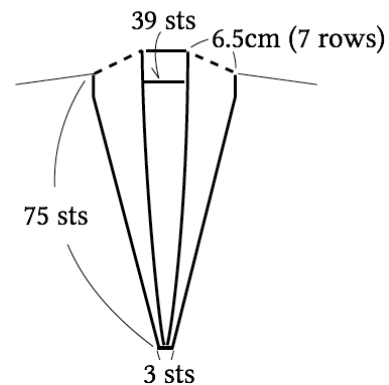
※ Waistline shaping is achieved by adjusting the gauge (through use of various needle sizes).

●sleeve

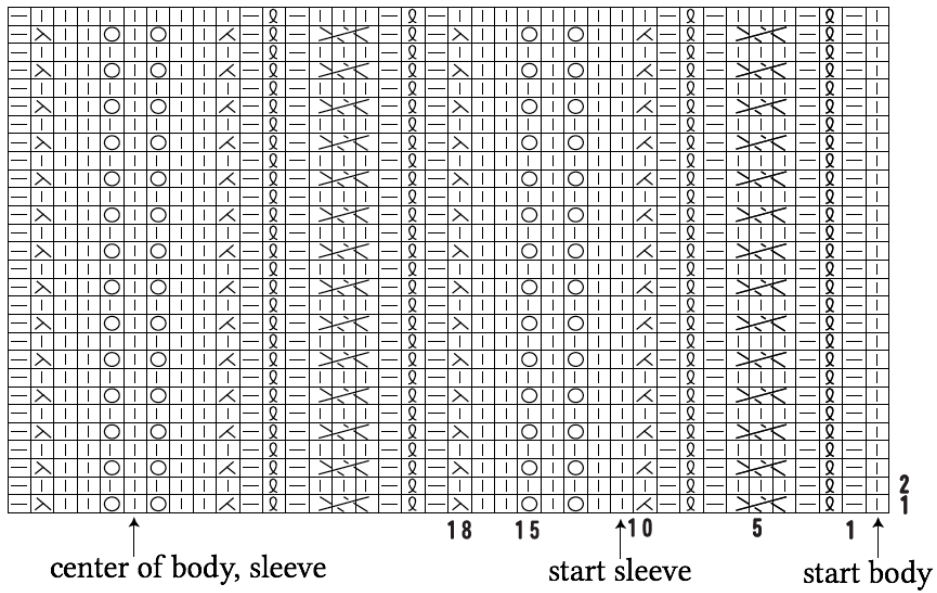


●collar (edging A)

2.5mm hook

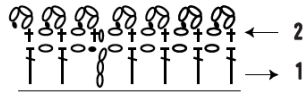


● pattern stitch



● edging B (hem, cuffs)

2.5mm hook



● collar & edging A

2.5mm hook

