

# 210-211-26 Dolman-sleeve Pullover

© Pierrot Yarns (Gosyo Co., Ltd.). Translation by Linda Lanz.



## Materials

- Pierrot Yarns Yuyake no Sora [100% wool; 427 yds/390m per 3.17–3.53 oz./90–100g hank]; color #103 blue mix; 6 hanks [510g]
- 3.6mm (approx. US 4 or 5) and 4.2mm (approx. US 6) knitting needles or sizes necessary to achieve gauge
- 3.5m (US E) crochet hook or size necessary to achieve gauge
- darning needle

## Gauge

Gauge is measured in a swatch 10cm/4" square.

- stockinette stitch: 17 sts and 28 rows
- pattern stitch: 25 sts and 28 rows

## Finished measurements

- body width 42cm/16.54"
- center back neck-to-cuff 72.5cm/28.54"
- length 58.5cm/23.03"

## Knitting Tips

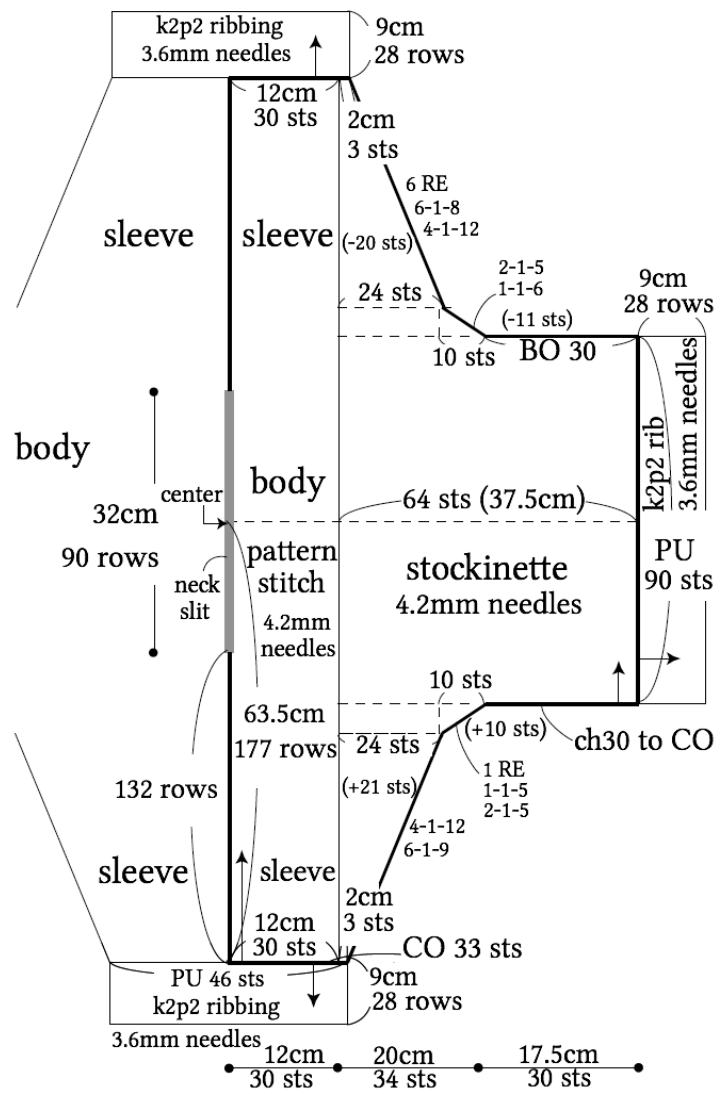
*Note: entire garment knit with 2 strands of yarn held together.*

**Sleeves and body (make 2):** Cast on using long-tail cast-on method. Starting from sleeve, knit in pattern stitch and stockinette stitch while increasing according to schematic. Knit body by picking up additional stitches from crochet provisional cast-on chain. Bind off 30 stitches and knit second sleeve while decreasing according to schematic.

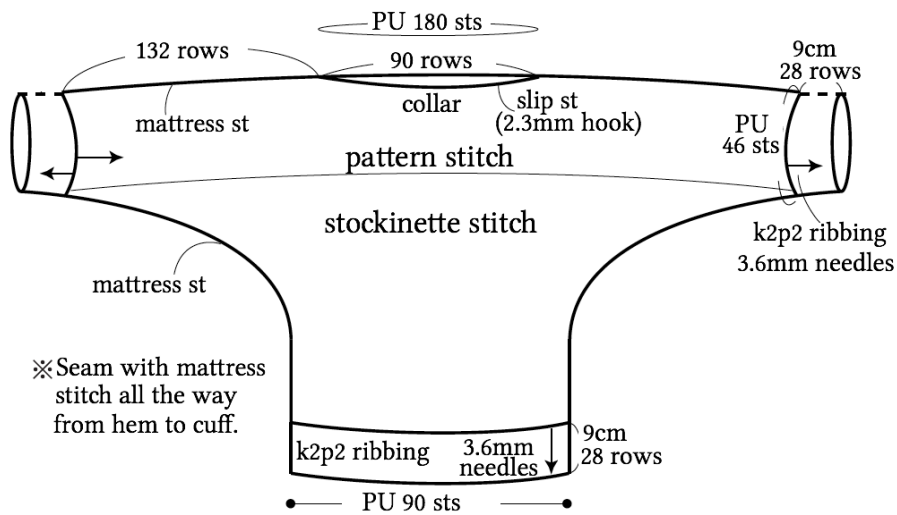
**Finishing:** Seam from cuff to collar (slit for neck opening) using mattress stitch. Repeat for other side. Work k2p2 ribbing at cuffs and hem. Seam from cuff to hem using mattress stitch. Crochet slip stitch around neckline.

**Abbreviations:** BO = bind off; ch = chain; CO = cast on; PU = pick up; RE = row(s) even

## ●sleeves & body (make 2)

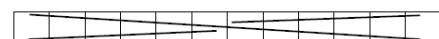
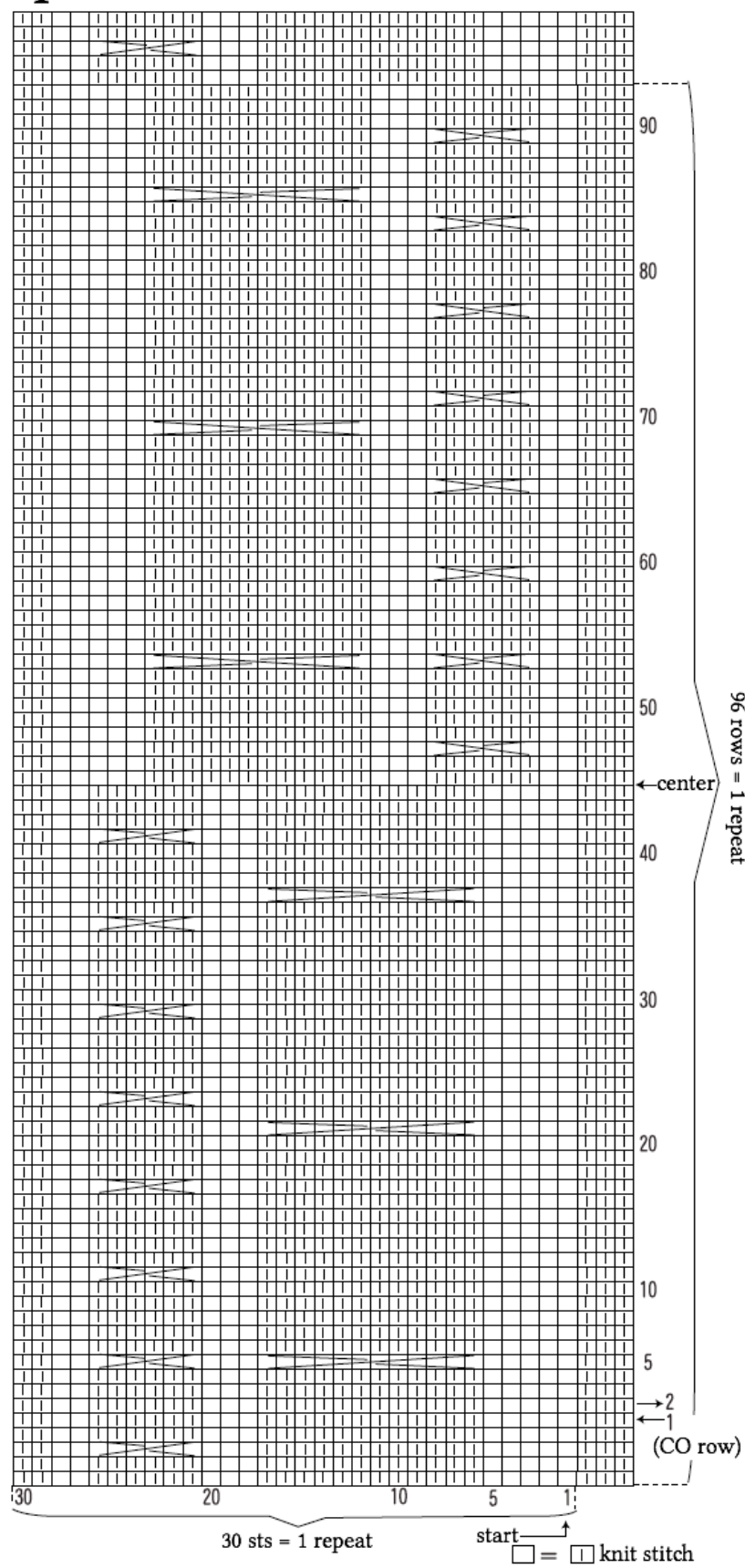


## ●finishing



※Seam with mattress stitch all the way from hem to cuff.

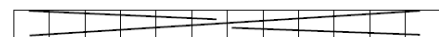
# ●pattern stitch (4.2mm needles)



||



C12F



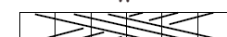
||



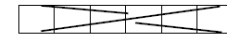
C12B



||



C6F



||



C6B