

# 210-211-20 Fine Merino Long Coat

© Pierrot Yarns (Gosyo Co., Ltd.). Translation by Linda Lanz.



## Materials

- Pierrot Yarns Fine Merino [100% merino wool; 103 yds/94m per 1.06 oz./30g skein]; color #227 vanilla beige; 27 skeins [810g]
- Pierrot Yarns Cutie Mohair [28% kid mohair, 28% acrylic, 15% superwash wool, 30% nylon; 310yds/283m per 0.88 oz./25g skein]; color #21 ivory; 12 skeins [300g]
- 4.5mm (US 7) and 5.1mm (approx. US 8) knitting needles or sizes necessary to achieve gauge
- 4.0mm (US G) crochet hook or size necessary to achieve gauge
- 4 iridescent beige buttons (15mm / approx. 5/8")
- 1 iridescent white button (15mm / approx. 5/8")
- darning needle

## Gauge

Gauge is measured in a swatch 10cm/4" square.

- pattern stitch: 21 sts and 27 rows
- seed stitch: 18 sts and 27 rows

## Finished measurements

- bust 95cm/37.40"
- cross back width 36cm/14.17"
- length 89cm/35.04"
- sleeve length 55cm/21.65"

## Knitting Tips

*Note: entire coat worked with 1 strand of Fine Merino and 2 strands of Cutie Mohair held together.*

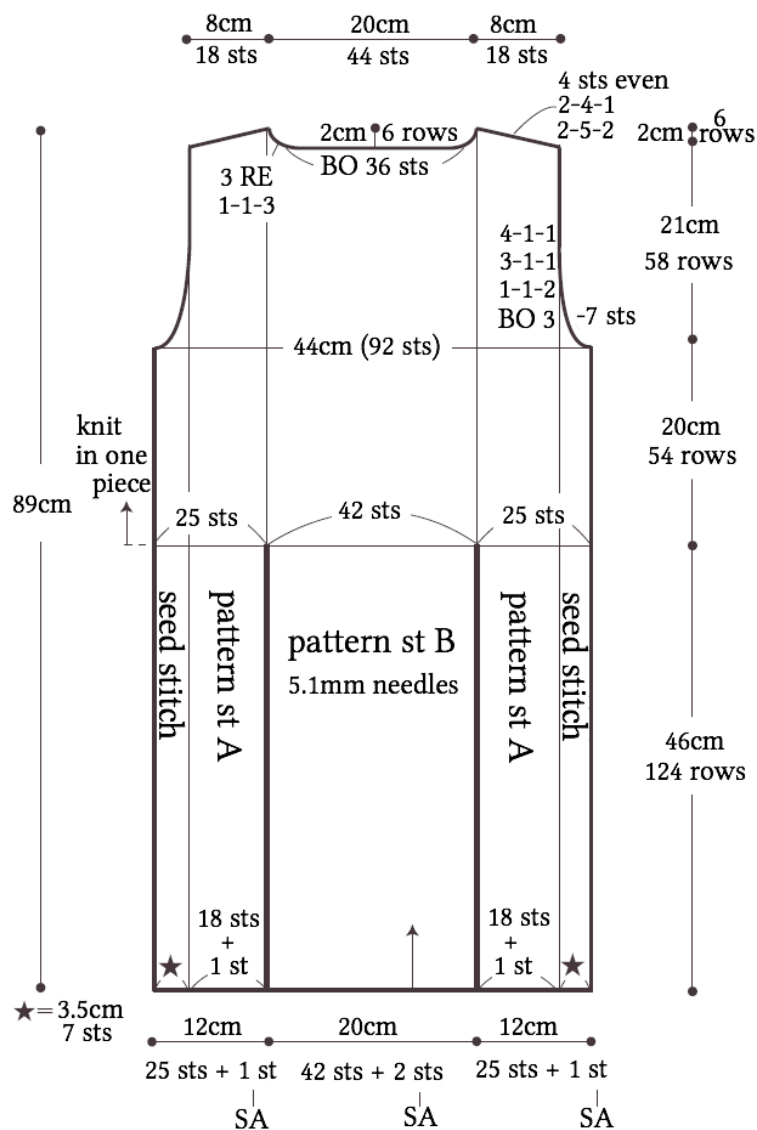
**Front:** Cast on with long-tail cast-on and knit 4 triangular gore pieces in seed stitch. Cast on with long-tail cast-on for back and knit three separate panels of seed stitch, pattern stitch A, and pattern stitch B according to schematics (note that not all panels use the same stitch patterns). Starting from the indicated row, knit three pieces as one piece. Beginning as for back, knit front according to schematics. Seam gores to designated places using mattress stitch.

**Sleeves:** Beginning as for body, knit in seed stitch and pattern stitch.

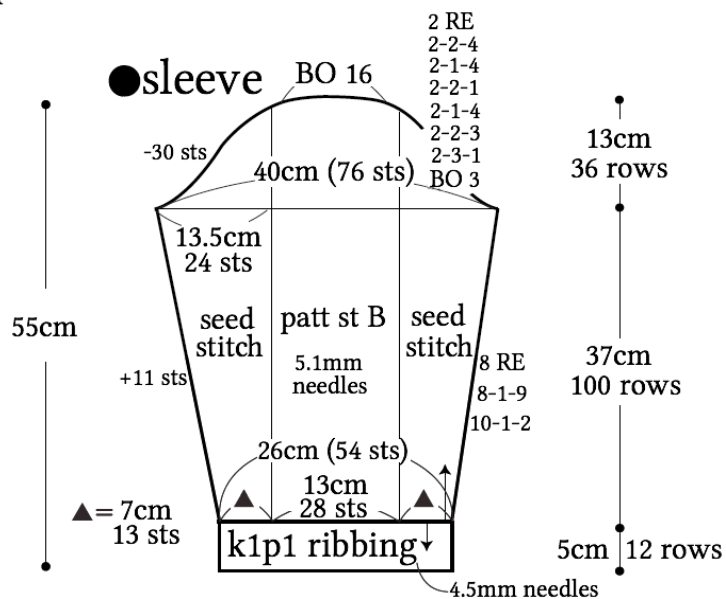
**Finishing:** Join shoulders with slip stitch seam, and seam sides and sleeves with mattress stitch. Pick up stitches from neckline and knit in k1p1 ribbing, then bind off with tubular bind-off. Pick up stitches around hem and knit in k1p1 ribbing; bind off in pattern. Join sleeves to body with slip stitch seam. Crochet slip stitch along front edges.

**Abbreviations:** BO = bind off; ms = mattress stitch; PU = pick up; RE = row(s) even; SA = seam allowance

## ●back

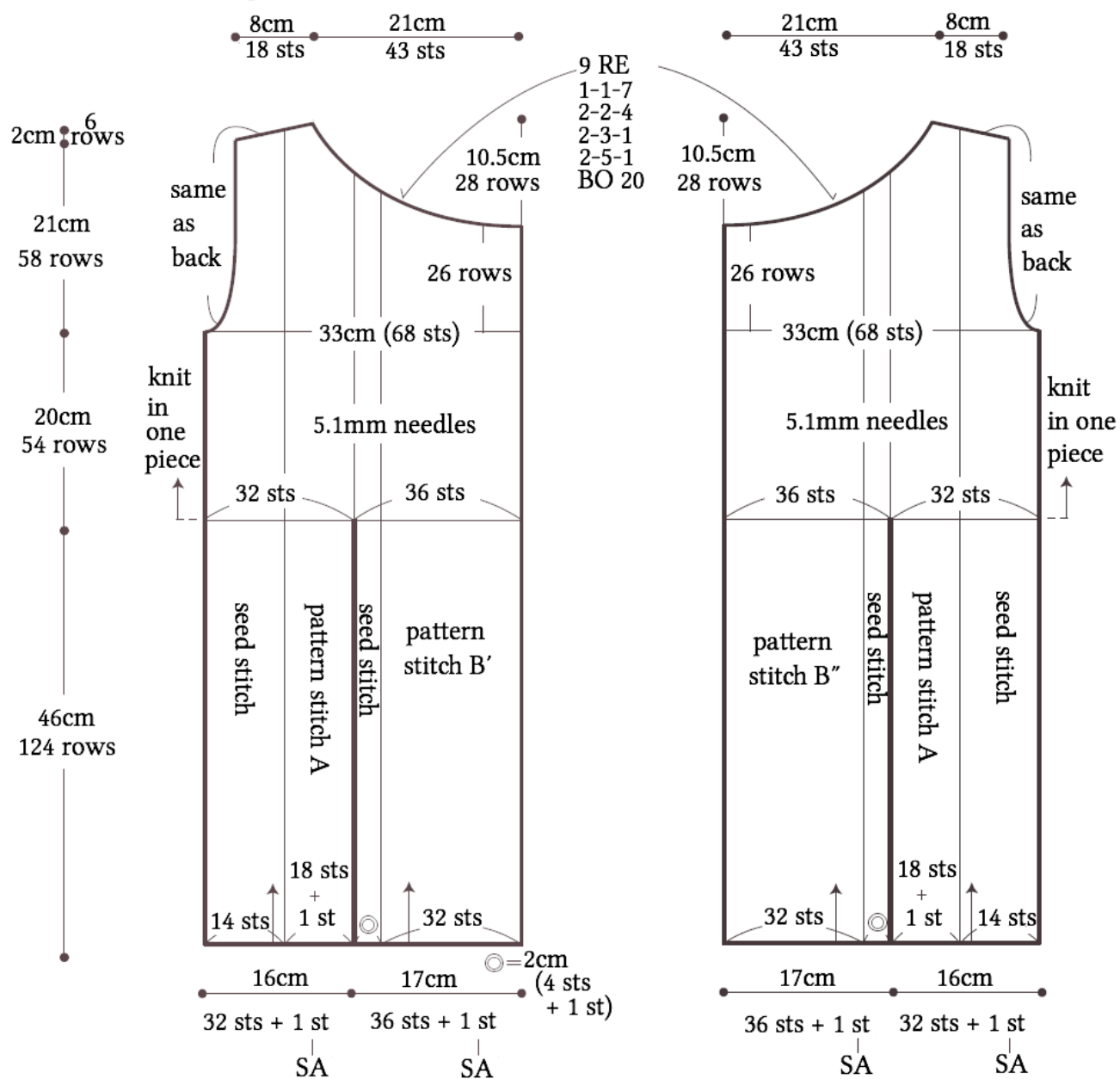


## ●sleeve

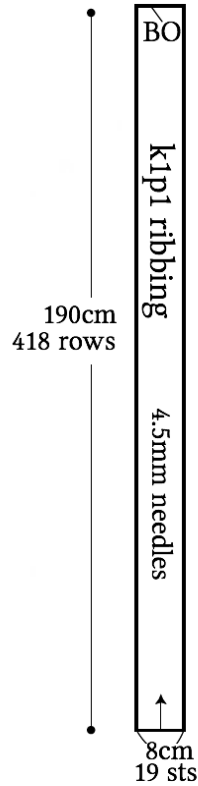


## ●right front

## ●left front



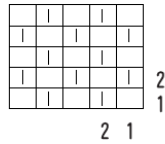
●belt



※CO 19 sts; knit in k1p1 rib but with 2 knit sts at each edge.

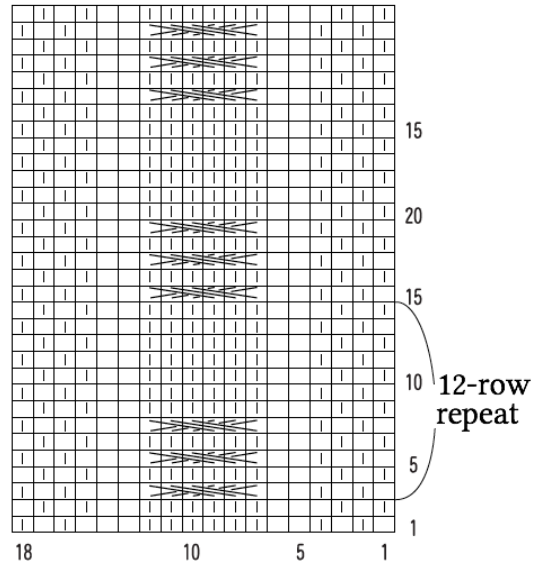
●seed stitch

□ = □ purl stitch



●pattern stitch A

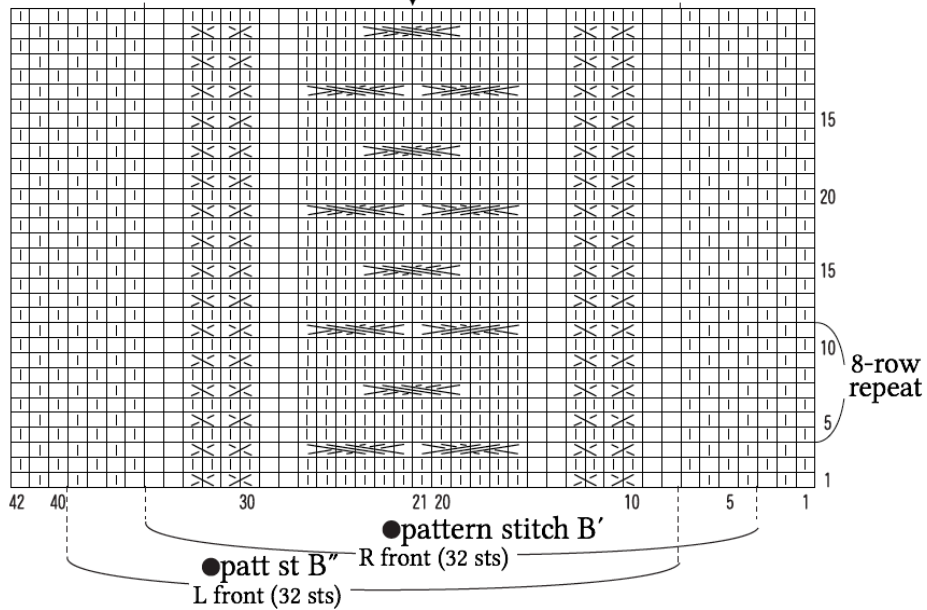
□ = □ purl stitch

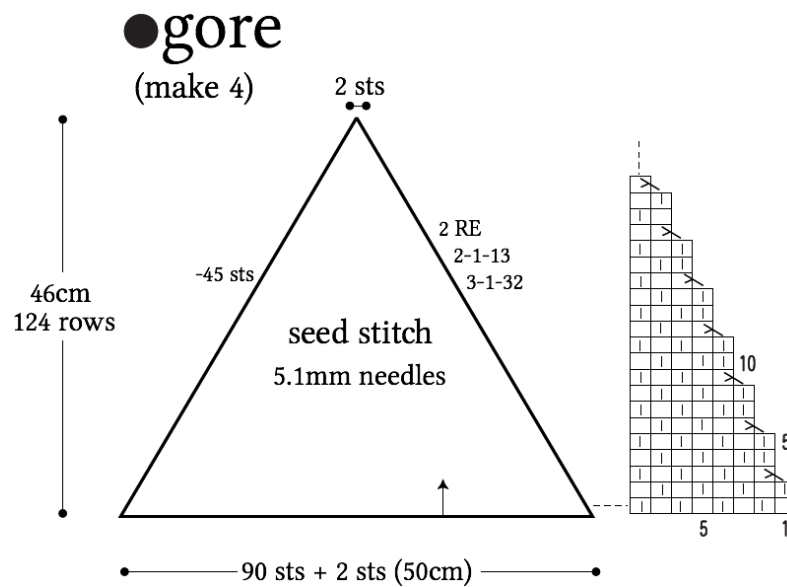


●pattern stitch B

sleeve: 28 sts  
center front/back

□ = □ purl stitch





●collar, hem, gores

