

23-24-22 Cowl-neck Pullover

© Pierrot Yarns (Gosyo Co., Ltd.). Translation by Linda Lanz.



- Pierrot Yarns Silk100 Sport [100% tussah silk; 169 yds/155m per 1.76 oz./50g cone]; color #9112 French rose; 8 cones [395g]
- 3.0mm (US 2½) and 3.3mm (approx. US 3) straight knitting needles or sizes necessary to achieve gauge
- 3.0mm (US 2½), 3.3mm (approx. US 3) and 3.6mm (approx. US 4 or 5) circular knitting needles or sizes necessary to achieve gauge

Gauge

Gauge is measured in a swatch 10cm/4" square.

- stockinette stitch: 25 sts and 36 rows
- both pattern stitch A and A': 27 sts and 36 rows

Finished measurements

- bust 88cm/34.65"
- length 57cm/22.44"
- cross back width 34cm/13.39"
- sleeve length 52cm/20.47"

Knitting Tips

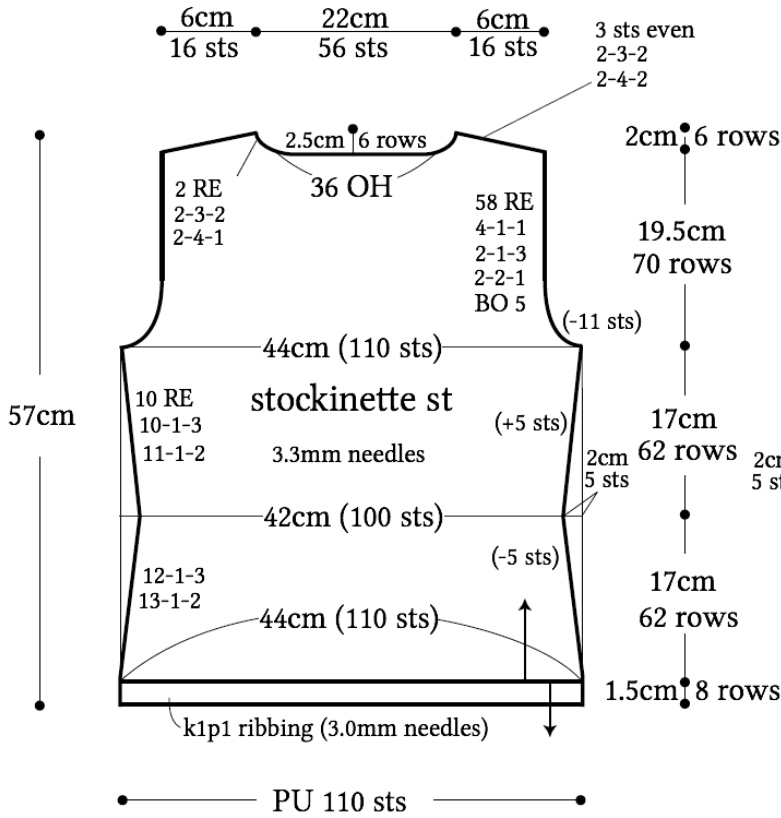
Body and sleeves: Cast on using provisional crochet cast-on method. Knit in stockinette stitch according to schematics, inserting pattern stitch at center front and center of sleeves. When decreasing 1 stitch, use k2tog or ssk (k2tog at right edge, ssk at left edge). When decreasing 2 or more stitches, bind off stitches. When increasing, use backwards loop cast-on. At cuffs and hem, pick up live stitches from provisional cast-on and knit in k1p1 ribbing. Bind off with tubular cast-off method.

Collar: Join shoulders with three-needle bind-off. Pick up necessary number of stitches from neckline and knit collar in pattern stitch, changing needle size when indicated to alter gauge.

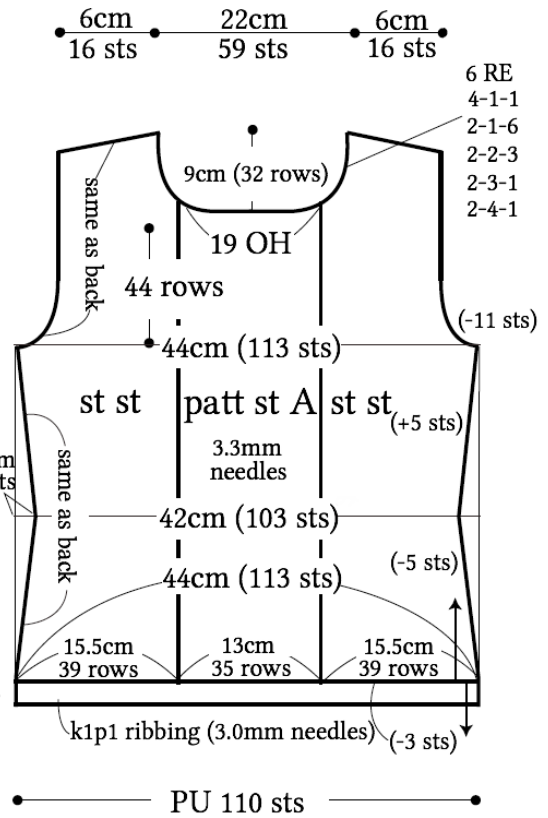
Finishing: Join side and sleeve undersides with mattress stitch. Join sleeves to body with slip stitch.

Abbreviations: BO = bind off; OH = on hold; PU = pick up; RE = row(s) even

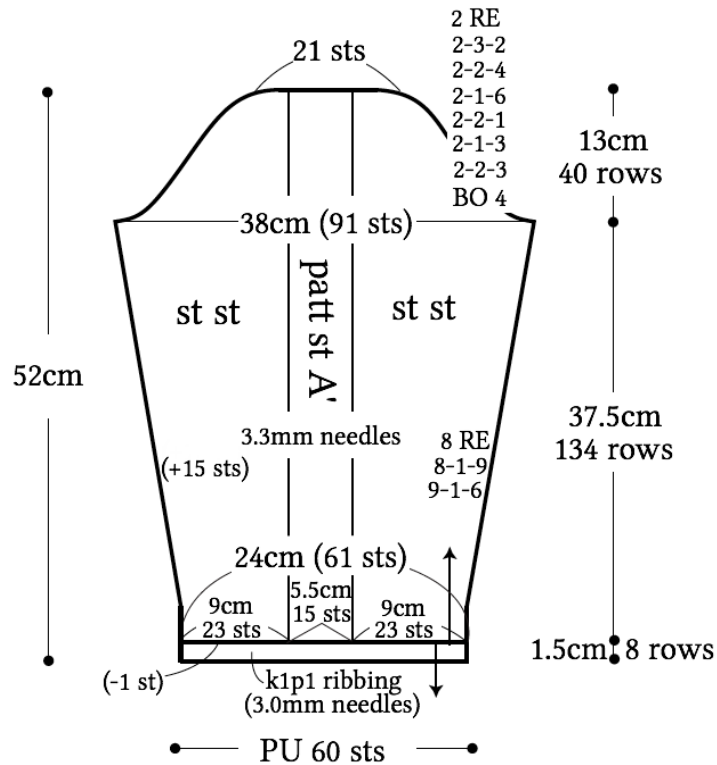
●back



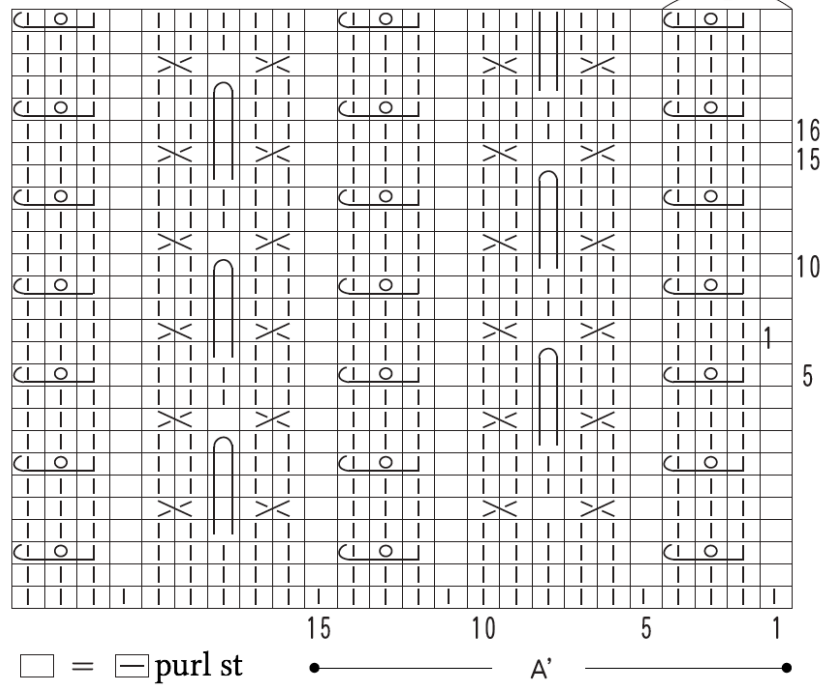
●front



●sleeve

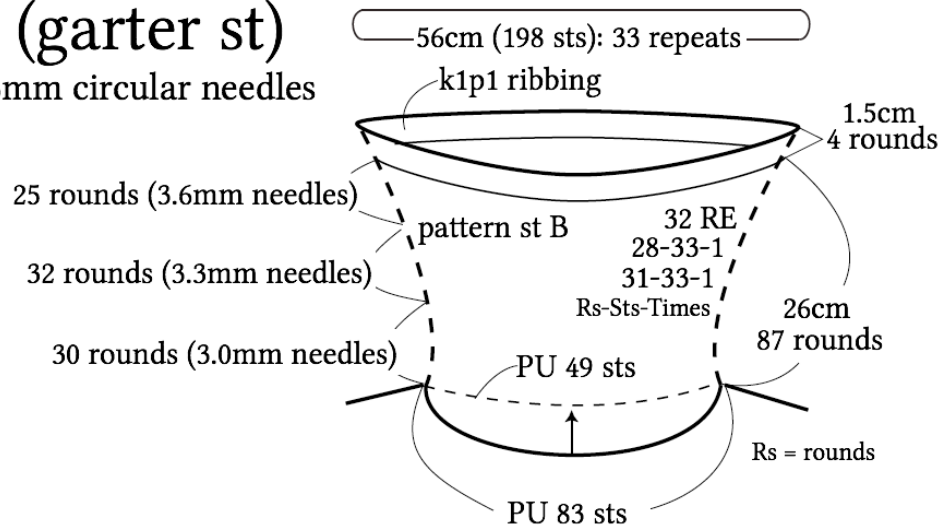


● pattern st A ● pattern st B (collar) 4 sts, 4 rows = 1 repeat

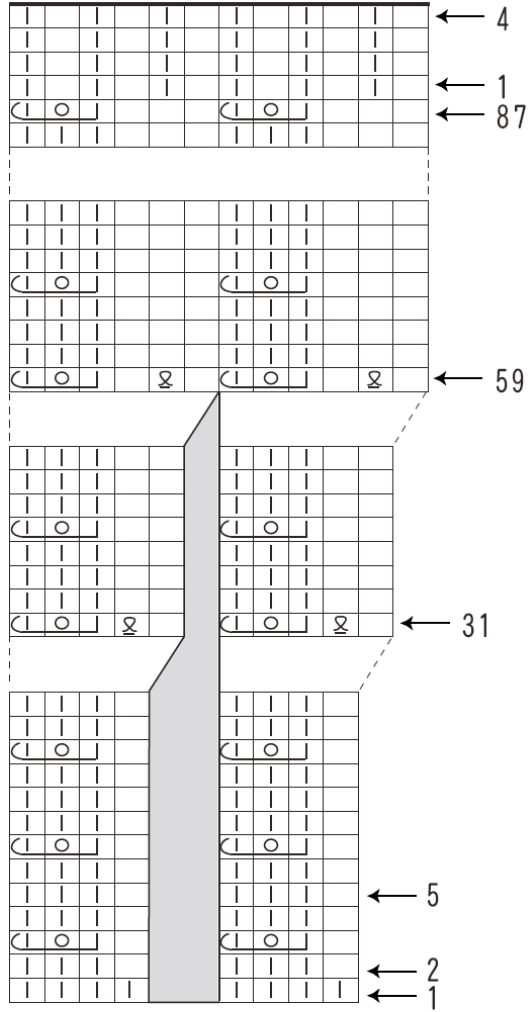


● collar (garter st)

3.0, 3.3 & 3.6mm circular needles



●collar increases



□ = □ purl stitch
 ■ = no stitch