

24-25-17 Relief Pattern Pullover

© Pierrot Yarns (Gosyo Co., Ltd.). Translation by Linda Lanz.



Materials

- Pierrot Yarns Silk100 Sport [100% tussah silk; 169 yds/155m per 1.76 oz./50g cone]; color #9101 white; 6 cones [290g]
- Pierrot Yarns Kirara [83% acrylic, 17% polyester; 1750 yds / 1600m per 1.76 oz. / 50g cone]; color #4802 white beige silver lamé; 1 cone [40g]
- 3.0mm (US 2½) and 3.6mm (approx. US 4 or 5) straight knitting needles or sizes necessary to achieve gauge
- 2.7mm (approx. US 2) and 3.0mm (US 2½) circular knitting needles or sizes necessary to achieve gauge
- cable needle

Gauge

- patterns A and B: 24 sts and 30 rows = 10cm/4" square

Finished measurements

- bust 94cm/37.01" • length 53cm/20.87"
- cross back width 35cm/13.78" • sleeve length 53cm/20.87"

Knitting Tips

Body: Cast on with crochet provisional cast-on and knit in patterns A and B. Use ssk for right-edge decreases, k2tog for left-edge decreases, and backwards-loop cast-on for increases at both edges.

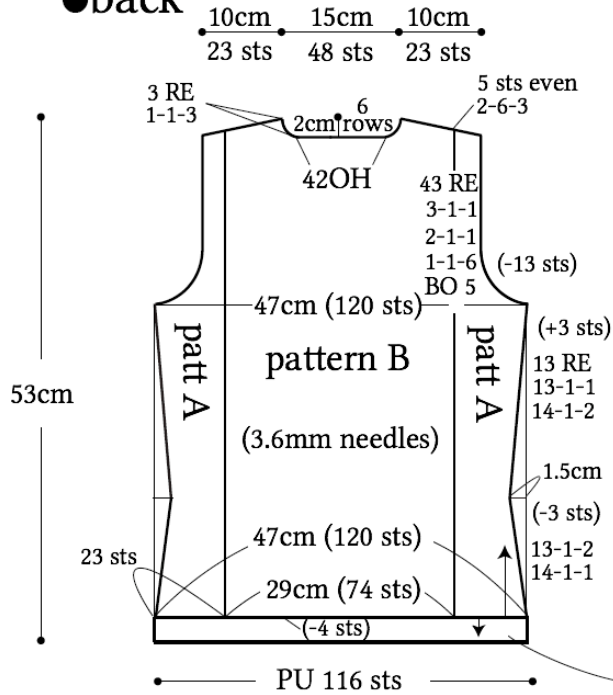
Sleeves: Cast on as for body. Begin working in pattern B only, and as you increase number of stitches, add pattern A at sides.

Finishing: Take out provisional cast-on edge at hem and cuffs, pick up stitches, and knit edging. Join shoulders with three-needle bind-off and knit collar in the round. Join sides and sleeve undersides with mattress stitch. Join sleeves to body with slip stitch seam.

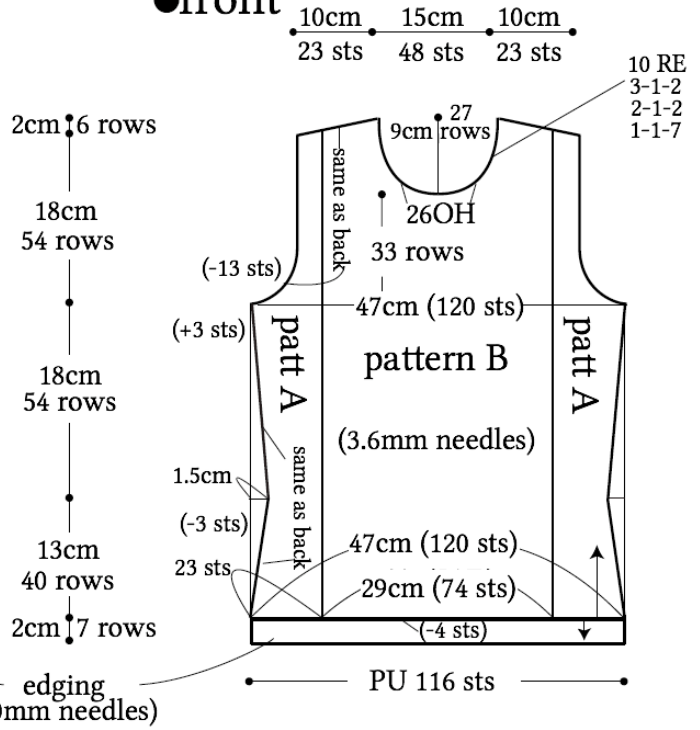
❖ **Note:** entire garment knit with one strand of each yarn held together.

Abbreviations: BO = bind off; OH = on hold; PU = pick up; RE = row(s) even

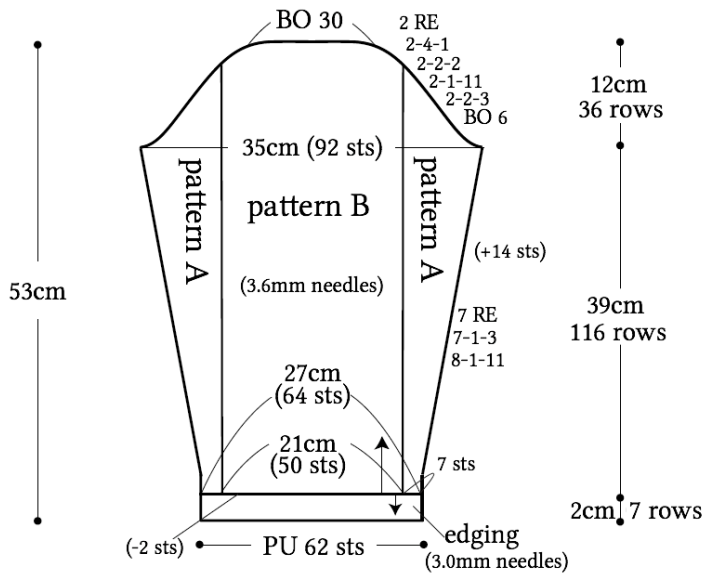
●back



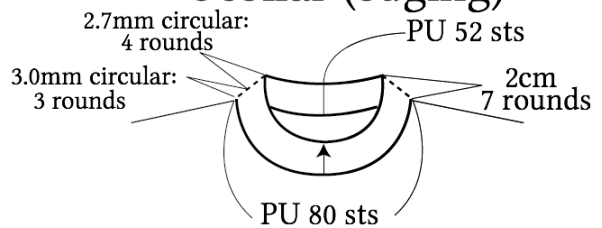
●front



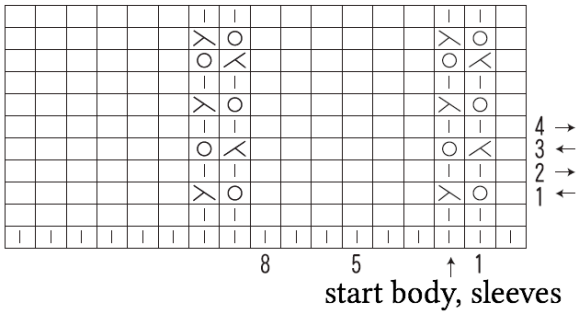
●sleeve



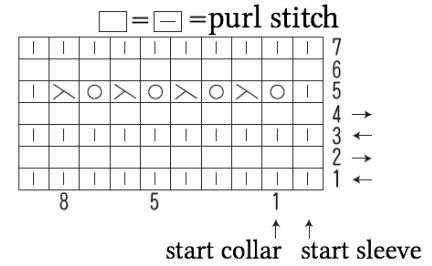
●collar (edging)



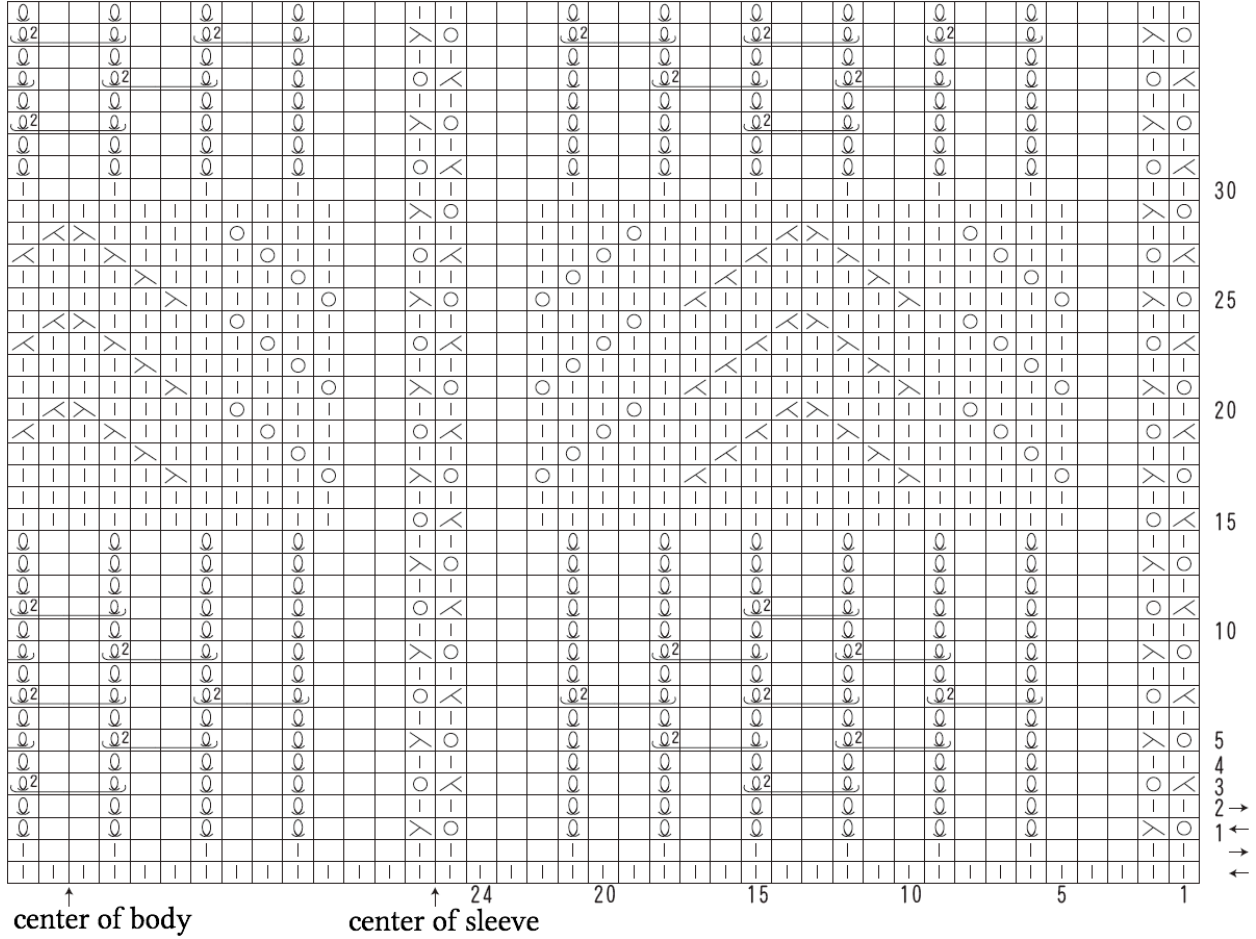
● pattern A □=□=purl stitch



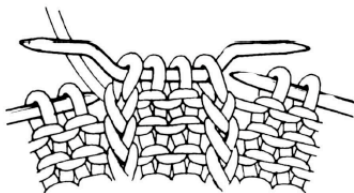
● edging



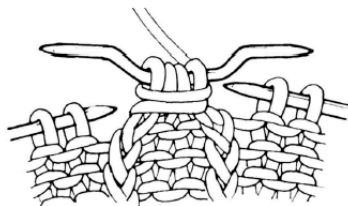
● pattern B



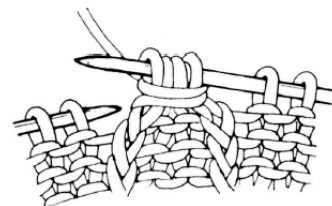
instructions: ★Knitted by wrapping yarn around sts. Only wrap number of times indicated.



① k4, move to cable needle



② wrap yarn around sts twice



③ move 4 sts to right needle; continue knitting