

# 21-22-9 Flower Sweater

© Pierrot Yarns (Gosyo Co., Ltd.). Translation by Linda Lanz.



## Materials

- Pierrot Yarns Silk Cashmere [50% lamb's wool, 35% silk, 15% cashmere; 120 yds/110m per 1.76 oz./50g skein]; color #1808; 9 skeins [450g] – *discontinued; please use appropriate substitute*
- 3.0mm (US 2½) and 3.6mm (US 4 or 5) knitting needles or sizes necessary to achieve gauge
- 3.0mm (US 2½) circular knitting needle or size necessary to achieve gauge

## Gauge

- pattern stitch A: 23 sts and 32 rows = 10cm/4" square
- pattern stitch B: 24 sts and 32 rows = 10cm/4" square
- pattern stitch C: 24 sts and 32 rows = 10cm/4" square
- pattern stitch D: 10 sts = 3.5cm/1.38" and 32 rows = 10cm/4"

## Finished measurements

- bust 92cm/36.22"
- length 57cm/22.44"
- cross back width 36cm/14.17"
- sleeve length 53cm/20.87"

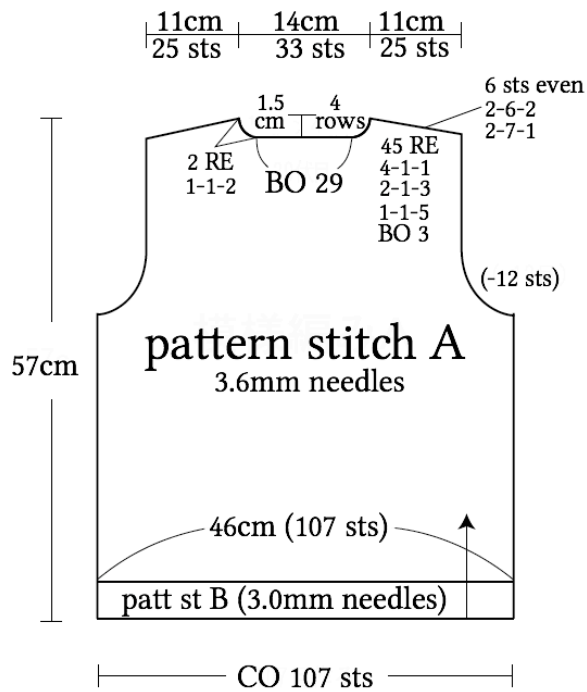
## Knitting Tips

**Body and sleeves:** Cast on with tubular cast-on method. Knit in pattern stitch according to charts. For pattern stitch C, refer to the various reliefs (labeled a–h). (Note that pattern stitch D, which is worked in thin strips alongside pattern stitch C, should not be confused with relief d.)

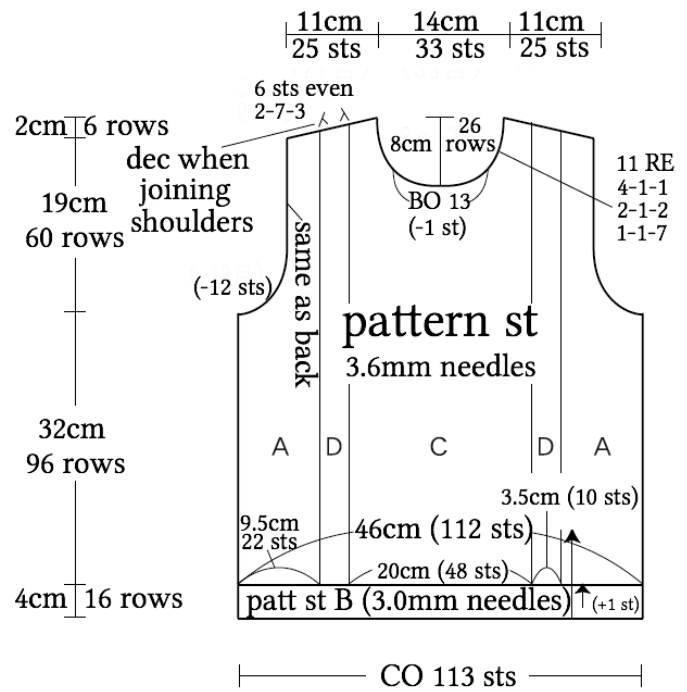
**Finishing:** With right sides facing, join shoulders with three-needle bind-off while also decreasing two stitches as indicated. Pick up stitches at neckline and knit collar, working last round in k1p1 ribbing and binding off in pattern. Join sides and sleeve undersides with mattress stitch. Join sleeves to body with slip stitch.

**Abbreviations:** CO = cast on; BO = bind off; PU = pick up; RE = row(s) even; rs = rows

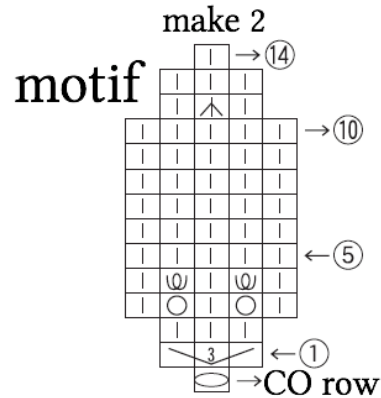
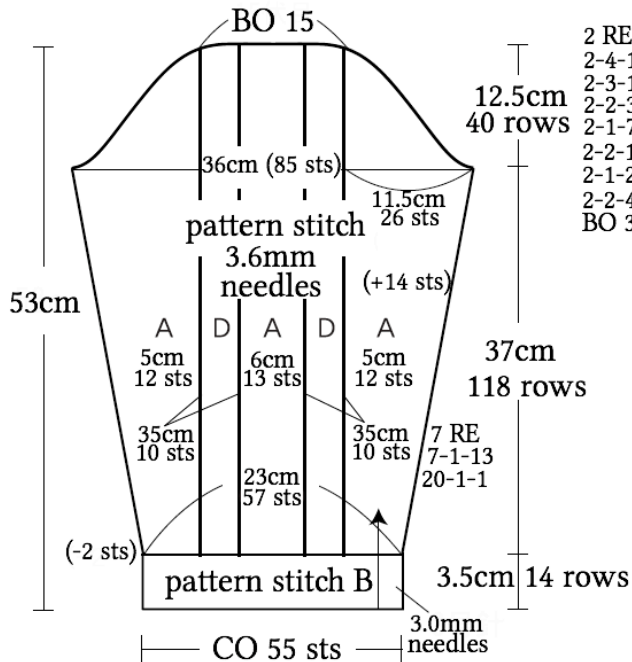
●back



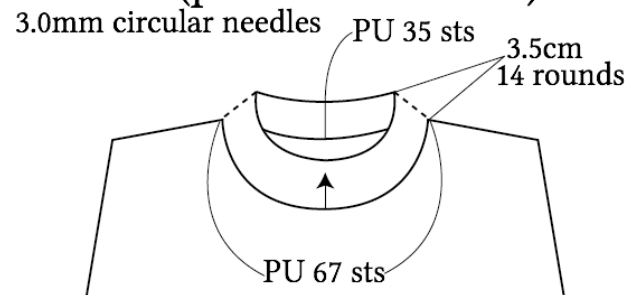
●front



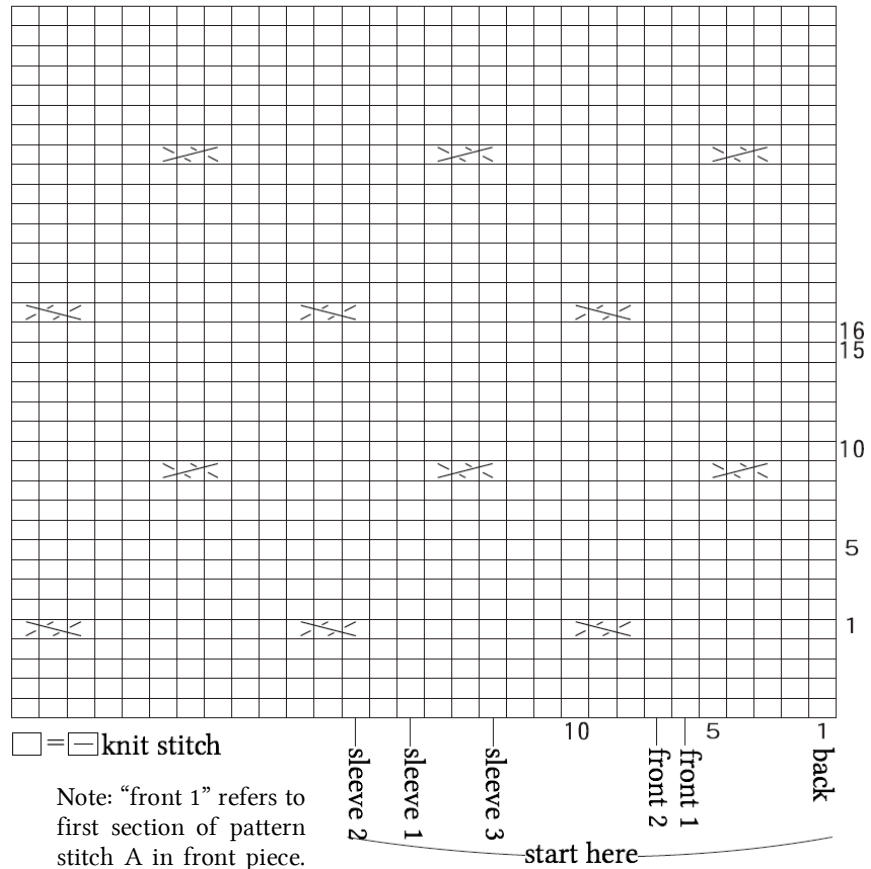
●sleeve



●collar (pattern stitch B')



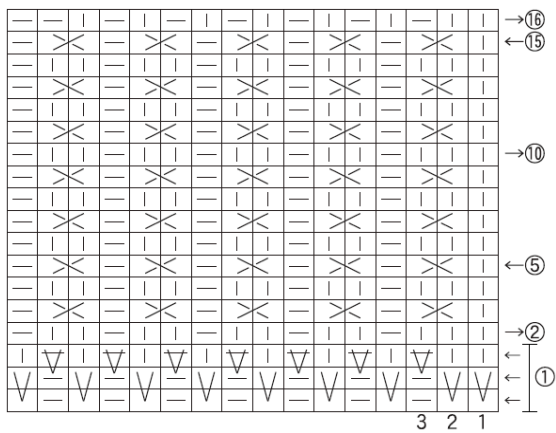
## ● pattern stitch A



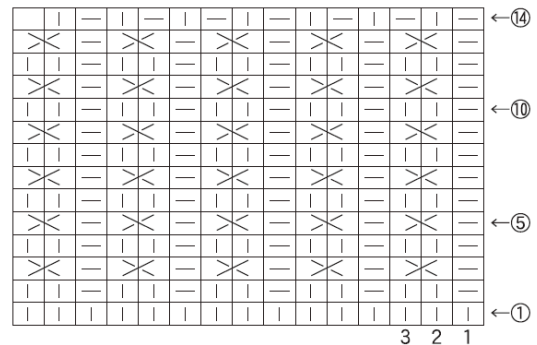
□ = — knit stitch

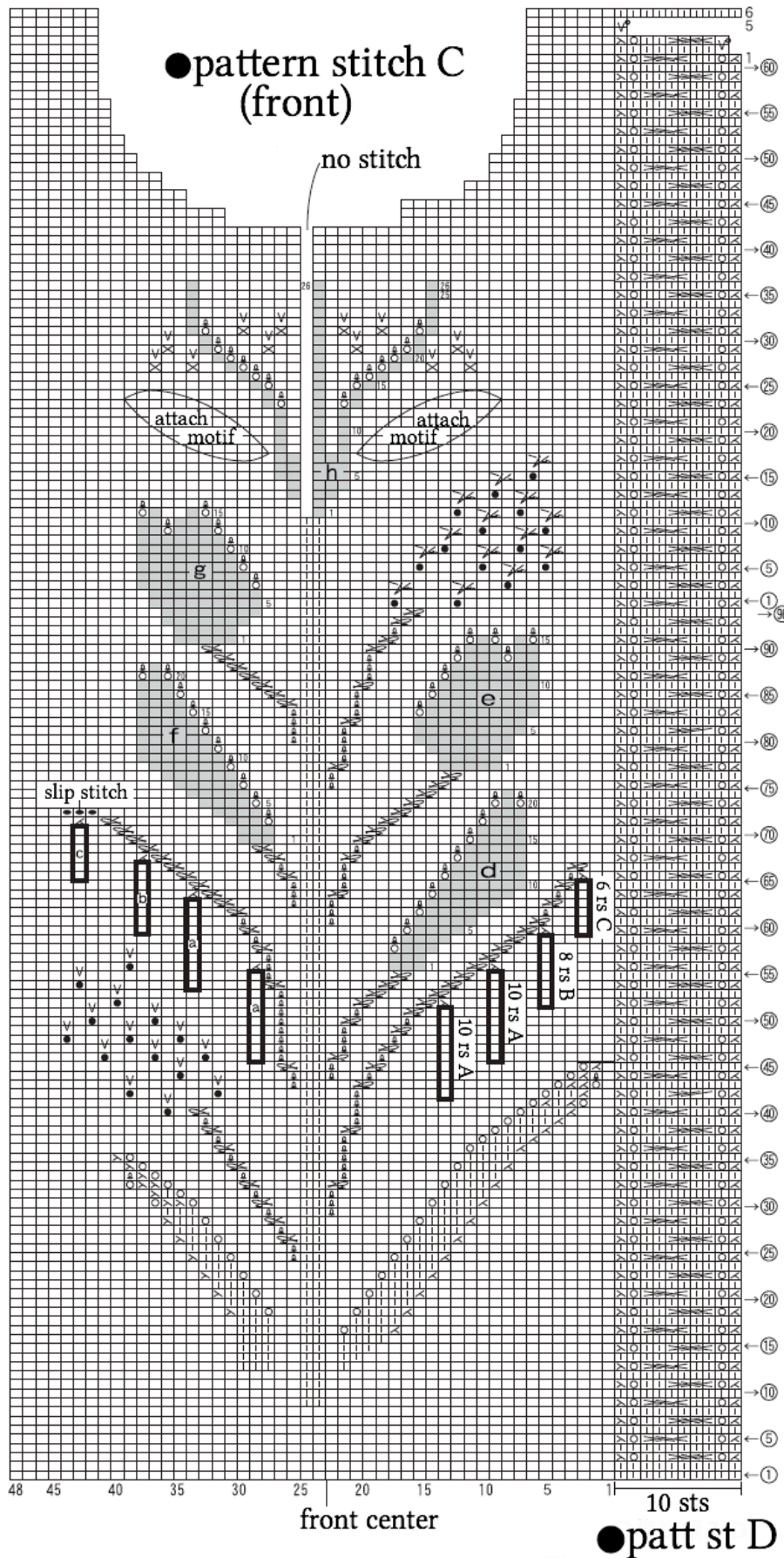
Note: “front 1” refers to first section of pattern stitch A in front piece. Likewise, “sleeve 1” refers to first section of pattern stitch A in sleeve, etc.

## ● pattern stitch B (hem, cuffs)



## ● pattern stitch B' (collar)





● pattern stitch C  
(front)

no stitch

attach motif

attach motif

slip stitch

front center

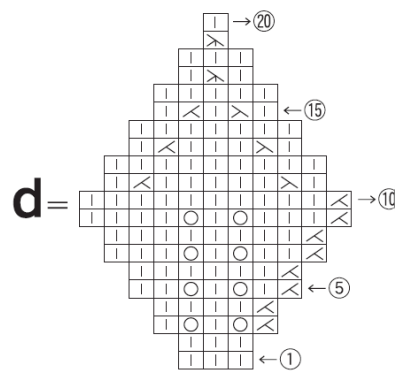
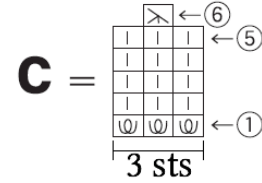
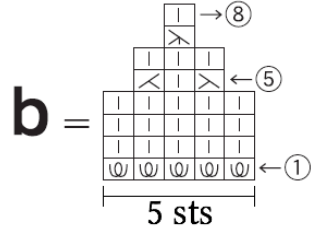
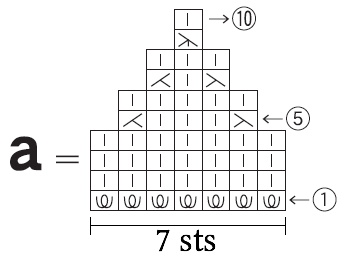
● patt st D

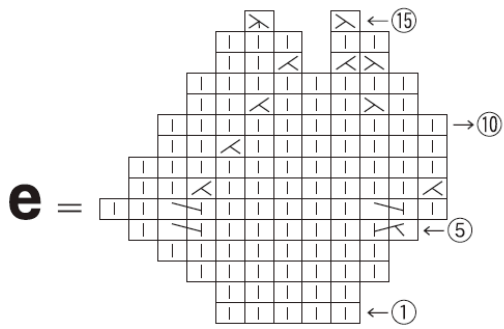
□ = □ purl st

● = ● 2.5mm hook

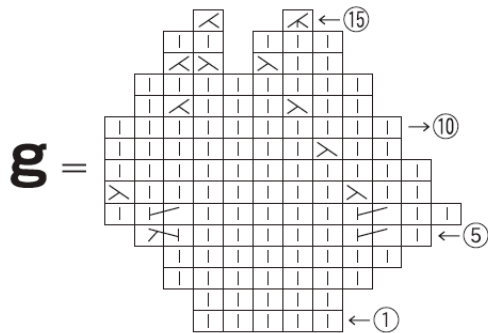
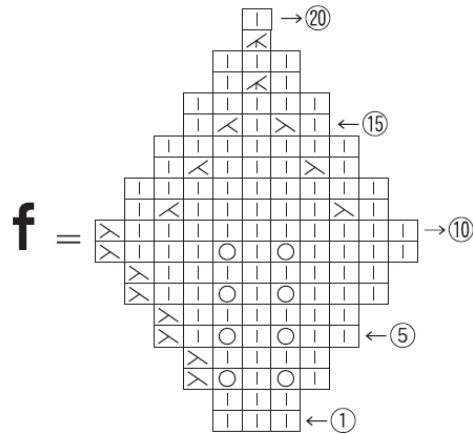
⊠ = ⊠ 2.5mm hook

⊠ ⊠ = twist 2 YOs from prev row & k tog





= Work right-slanting lifted increase, slip 2 sts just worked back to left needle, ssk.



= Work left-slanting lifted increase, slip 2 sts just worked back to left needle, k2tog.

