

210-11 Openwork Pullover

© Pierrot Yarns (Gosyo Co., Ltd.). Translation by Linda Lanz.



Materials

- Pierrot Yarns Soft Silk Ramie [70% ramie, 30% silk; 514 yds / 470m per 3.53 oz. / 100g cone]; color #10 light blue; 3 cones [300g]
- 3.0mm (US 2½) and 3.6mm (US 4 or 5) knitting needles or sizes necessary to achieve gauge
- 2.3mm (US B) crochet hook or size necessary to achieve gauge

Gauge

- pattern stitch: 19 sts and 26 rows = 10cm/4" square

Finished measurements

- bust 90cm/35.4"
- cross back width 33cm/13.0"
- length 67.5cm/26.6"
- sleeve length 39cm/15.4"

Knitting Tips

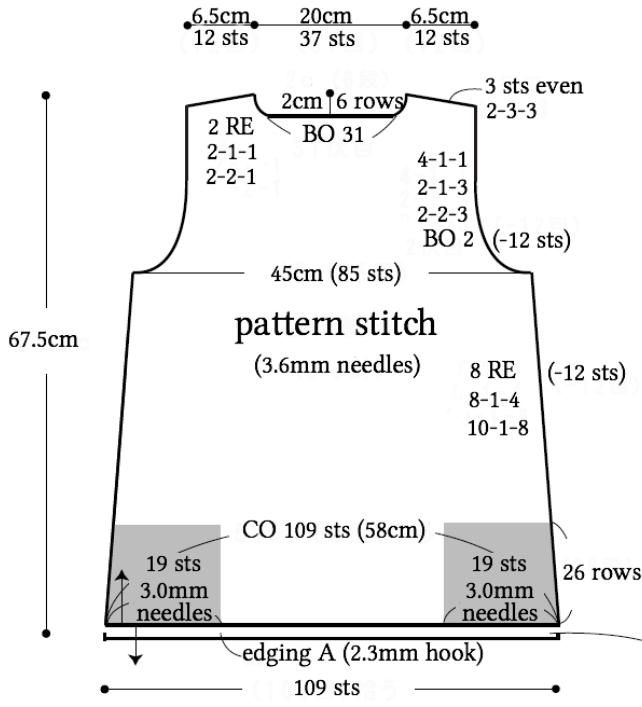
❖ **Note:** entire sweater is worked with two strands of yarn held together.

Body and sleeves: Cast on using long-tail cast-on method and knit in pattern stitch. Change needles in gray shaded areas to achieve tighter gauge. When working front, starting from the neck work right and left sides separately.

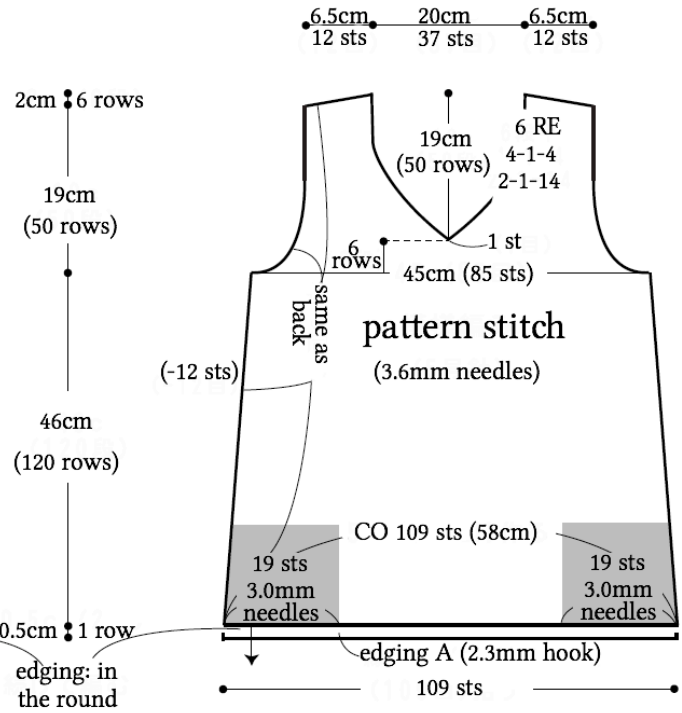
Finishing: Join shoulders with three-needle bind-off. Join sides and sleeve undersides with mattress stitch. Work edging A in the round along hem and cuffs. With right side facing, work one round of single crochet (US) around neckline, and cut yarn. Rejoin yarn, then work edging B with wrong side facing. Once again, cut and rejoin yarn, then with the right side facing work another round of single crochet around neckline. Join sleeves to body with slip stitch.

Abbreviations: BO = bind off; CO = cast on; RE = row(s) even

●back

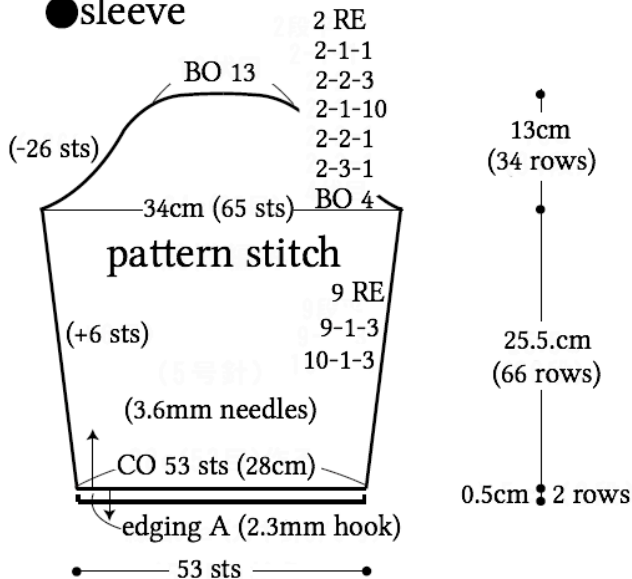


●front



※In order to keep the sides straight, adjust gauge in gray areas by using smaller needles.

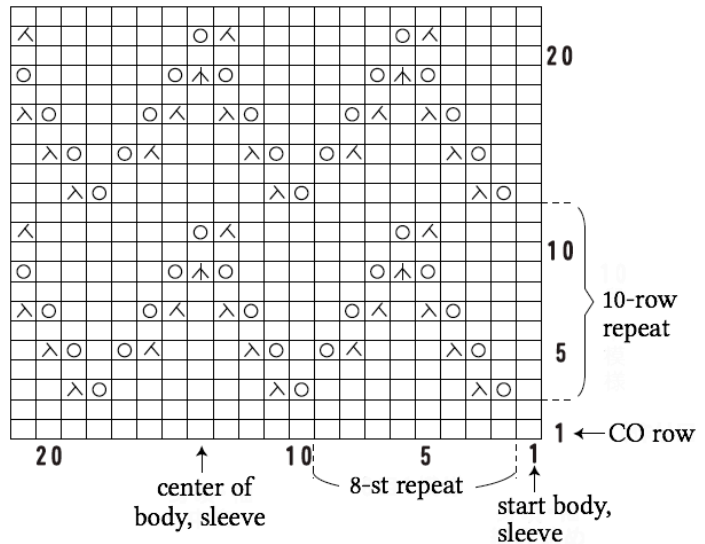
●sleeve



●pattern stitch

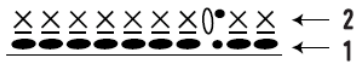
(3.6mm needles)

□ = □ knit stitch



● edging A (cuffs, hem)

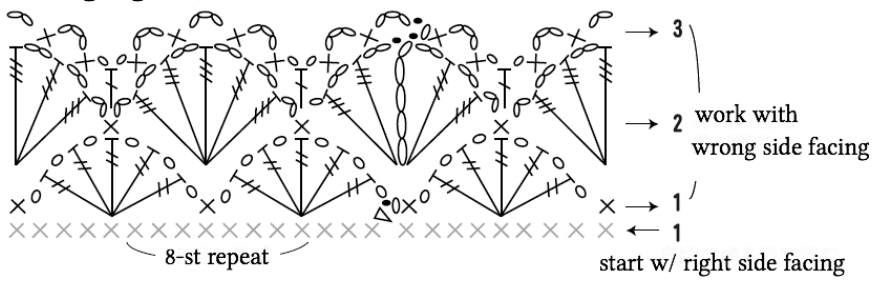
(2.3mm hook)



⊗ = single crochet through
back loop only

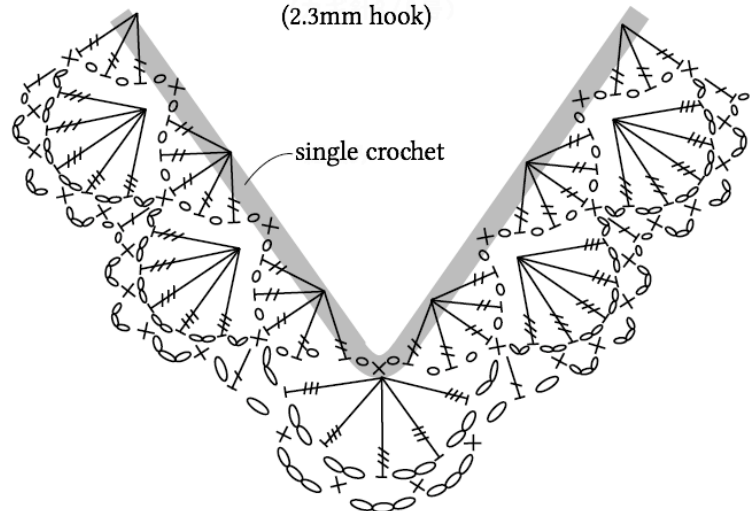
● edging B (neckline)

(2.3mm hook)

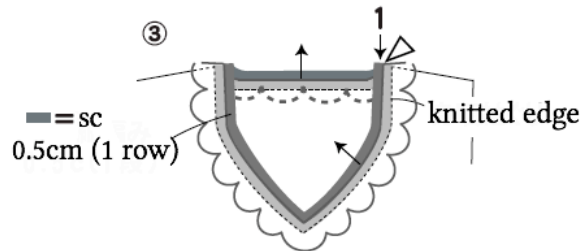
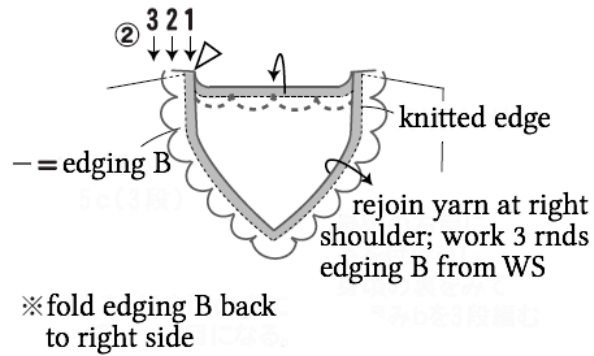
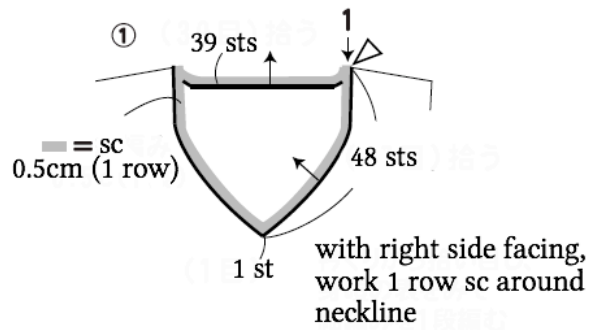


● edging B corner

(2.3mm hook)



● neckline edging (2.3mm hook)



Join yarn to gray — single crochet,
then work 1 rnd sc with RS facing.

sc = single crochet
△ = join yarn