

21-22-12 Smocked Sweater

© Pierrot Yarns (Gosyo Co., Ltd.). Translation by Linda Lanz.



Materials

- Pierrot Yarns Soft Mohair [30% mohair, 65% acrylic, 5% nylon; 219 yds / 200m per 1.06 oz. / 30g skein]; color #932; 15 skeins [440g] – *this yarn will be discontinued in 2010*
- 2.7mm (US 2), 3.0mm (US 2½) and 3.6mm (US 4 or 5) knitting needles or sizes necessary to achieve gauge
- 2.0mm and 2.3mm (US B) crochet hooks or sizes necessary to achieve gauge
- tapestry needle

Gauge

Gauge is measured in a swatch 10cm/4" square.

- stockinette stitch: 26 sts and 34 rows
- pattern stitch: 32 sts and 34 rows

Finished measurements

- bust 96cm/37.8"
- cross back width 38cm/15"
- back length 60.5cm/23.8"
- sleeve length 53cm/20.9"

Knitting Tips

Body and sleeves: Cast on using tubular cast on for 1x1 ribbing. After knitting the ribbing, knit according to the schematic. Work smocking stitch on body and sleeves.

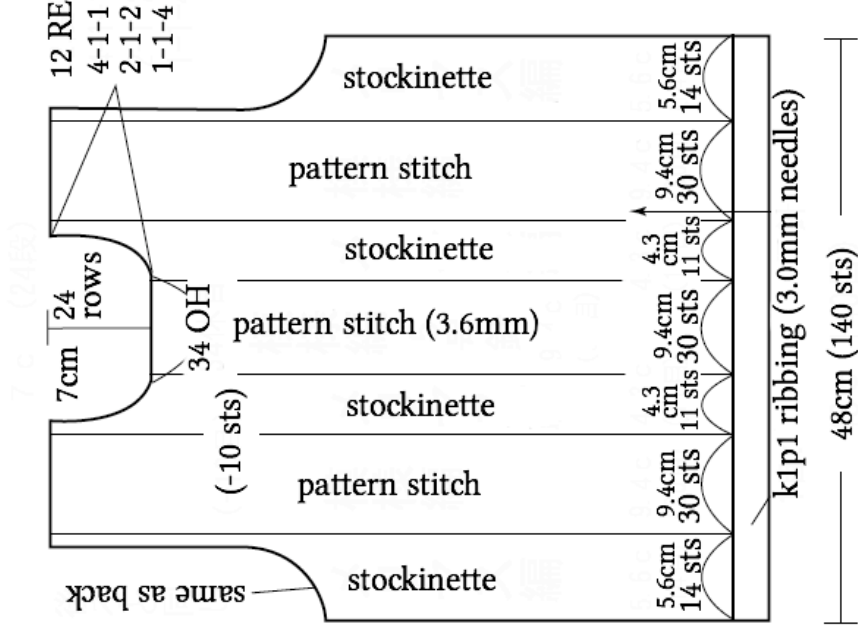
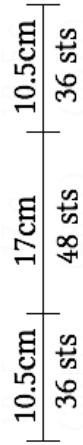
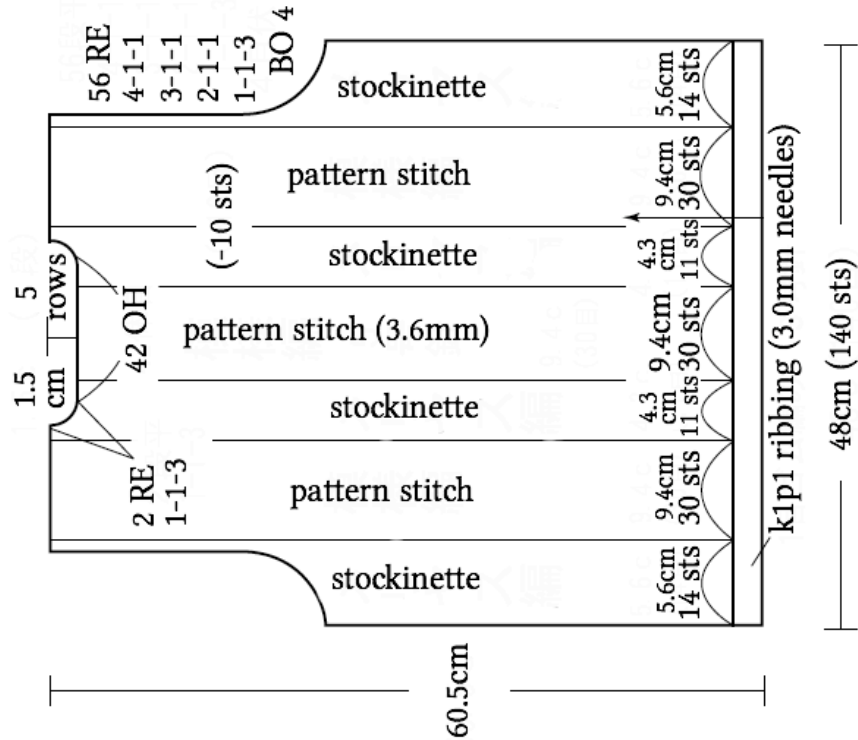
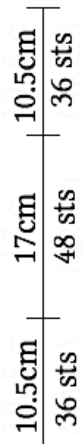
Finishing: Join shoulders with three-needle bind-off. Pick up stitches from back and front and work collar. (Decrease in pattern stitch panel at the center of front and back sides.) Join sides and sleeve seams with mattress stitch, then attach sleeves to body using slip stitch.

❖ Entire garment is worked with two strands of yarn held together.

● **back**

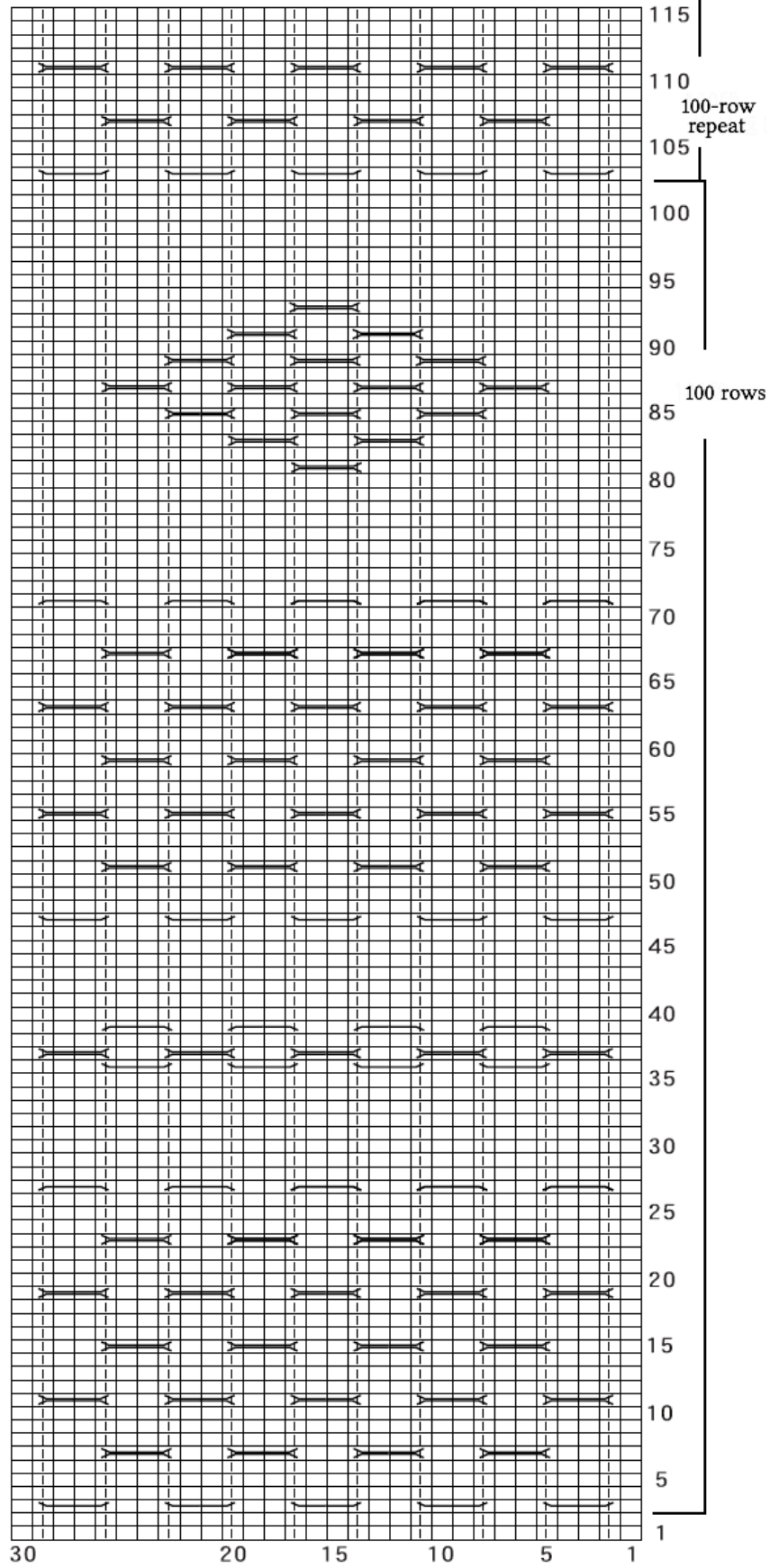
BO = bind off
 RE = row(s) even
 OH = on hold

● **front**

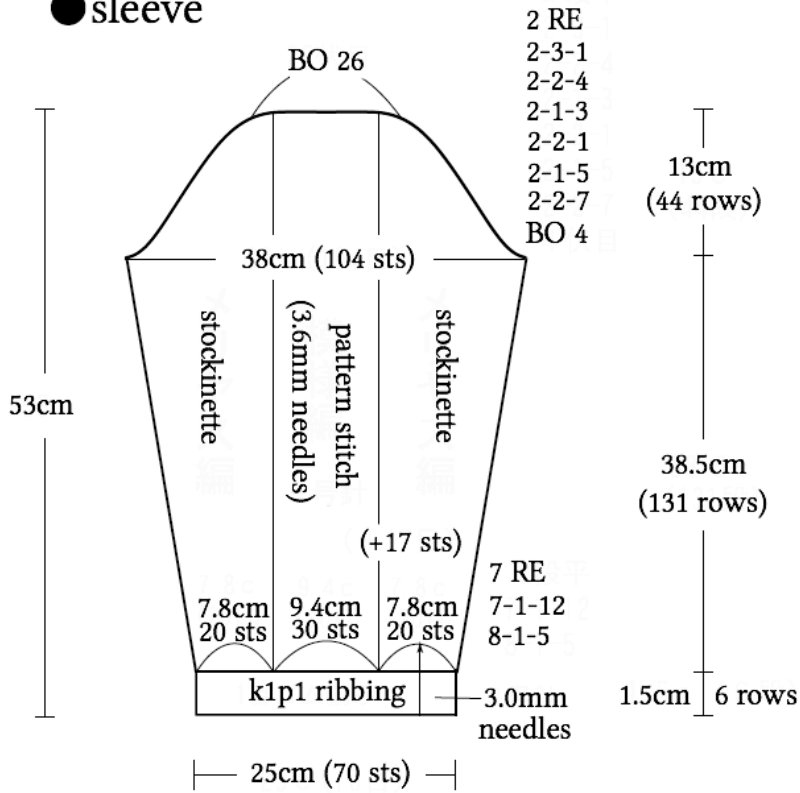


● smocking (pattern stitch)

□ = □ knit stitch



● sleeve

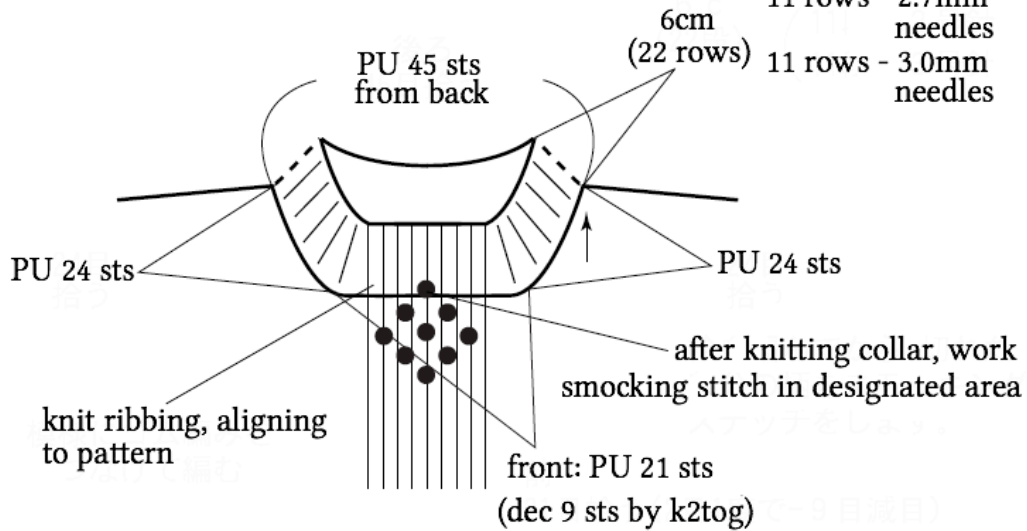


● collar (k1p1 ribbing)

(2.7mm and 3.0mm circular needles)

● gauge adjustment

11 rows - 2.7mm needles
11 rows - 3.0mm needles



● how to work smocking stitch

