

# 220ss-03 Pochette V-neck



## Suggested yarn:

- Pierrot Yarns Pochette [50% superwash merino wool, 50% cotton; 131 yds/120m per 1.4 oz./40g skein]; color #14 aqua blue, 9 skeins [330g]

## Tools/Notions:

- 2.7mm (approx. US 2) and 3.3mm (approx. US 3) knitting needles or sizes necessary to achieve gauge
- 2.3mm (approx. US B) crochet hook or size necessary to achieve gauge

## Finished measurements:

- bust 106cm/41.7"
- center back neck-to-cuff 56.5cm/22.2"

## Gauge (10cm/4" square):

- pattern stitch: 22 sts and 36 rows

*Gauge may vary according to individual knitting style. Change needle size if necessary to achieve gauge. Alternatively, rework pattern with your own gauge measurements.*

## Summary

**Body (back & front):** Cast on with long-tail cast-on method. Work in k1p1 ribbing. Continue in pattern stitch. For front only, starting at neckline, divide and work right and left sides separately. Bind off.

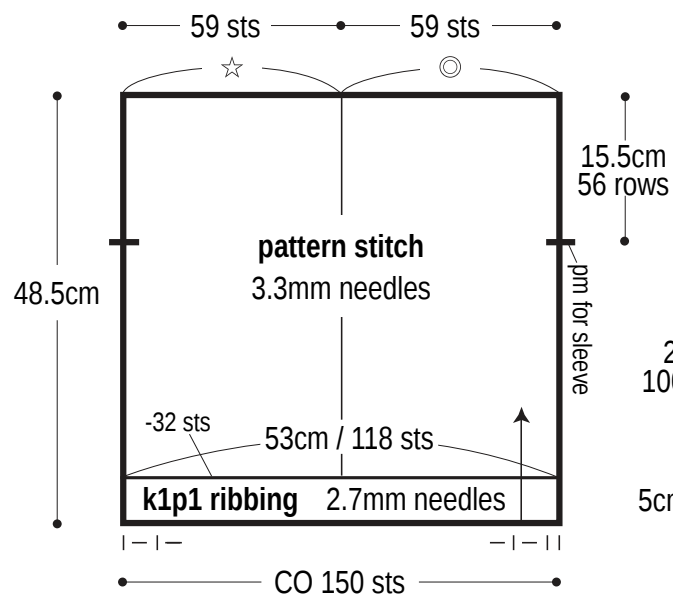
**Sleeve (make 2):** Cast on with long-tail cast-on method. Work in pattern stitch.

**Finishing:** With right sides facing each other, align shoulders of front and back pieces as indicated by markings on schematics. With front of garment facing you, seam shoulders with slip stitch seam. Seam sides of body with mattress stitch. With right sides facing each other, seam sleeve undersides with slip stitch seam, taking care not to seam too tightly. Seam sleeves to body with slip stitch seam. Crochet slip stitch edging around neckline in the round.

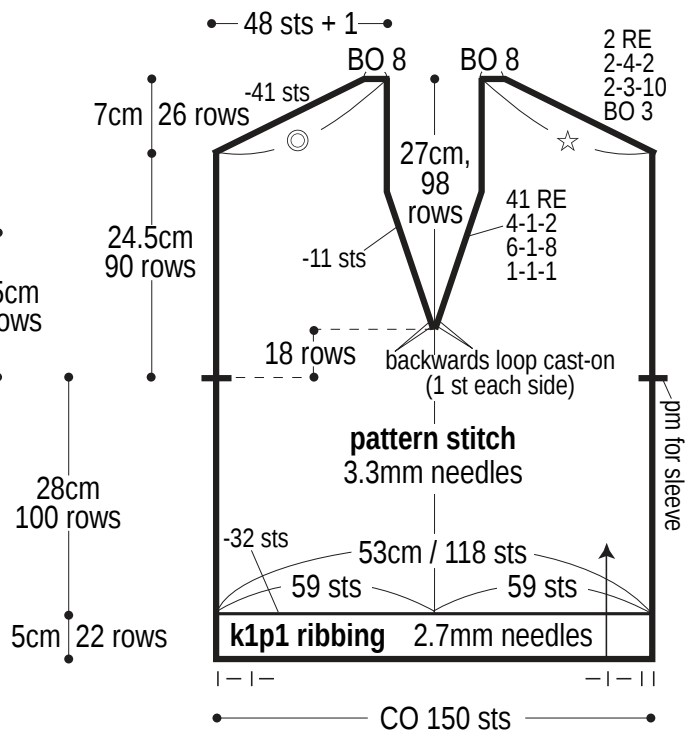
## Abbreviations:

BO = bind off      CO = cast on      k = knit      p = purl      pm = place marker      RE = row(s) even      WS = wrong side      #-#-# = rows-stitches-times

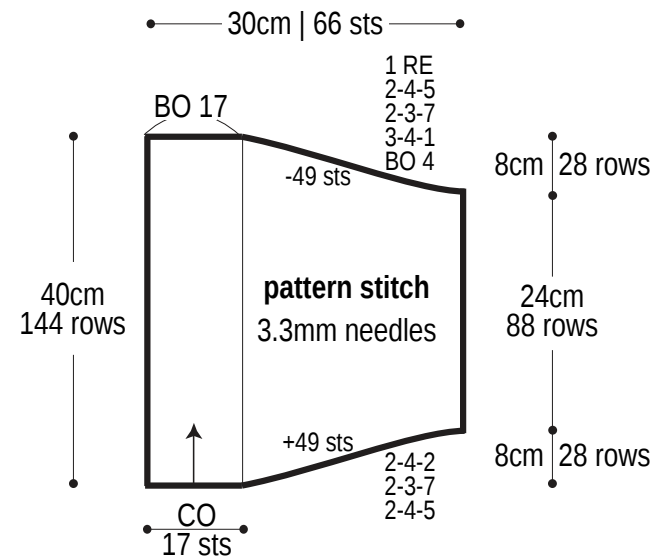
## Back



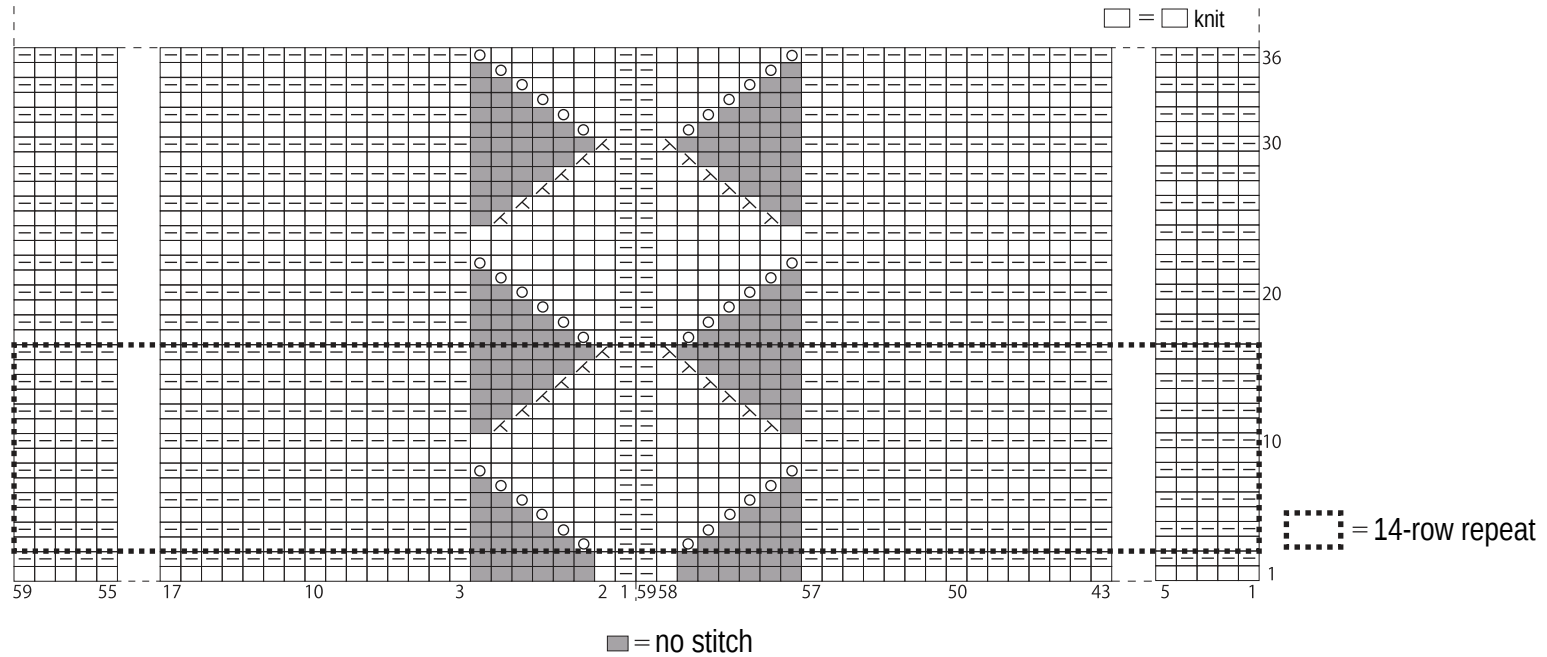
## Front



## Sleeve



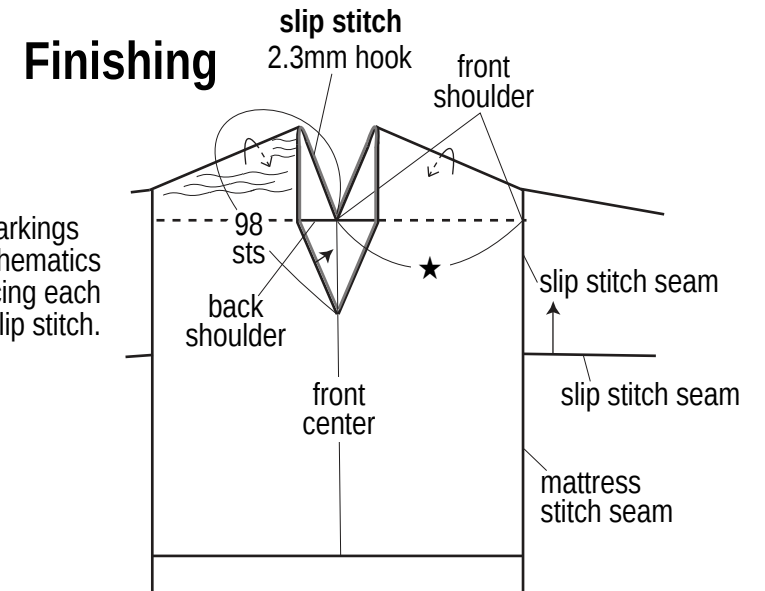
# Pattern stitch

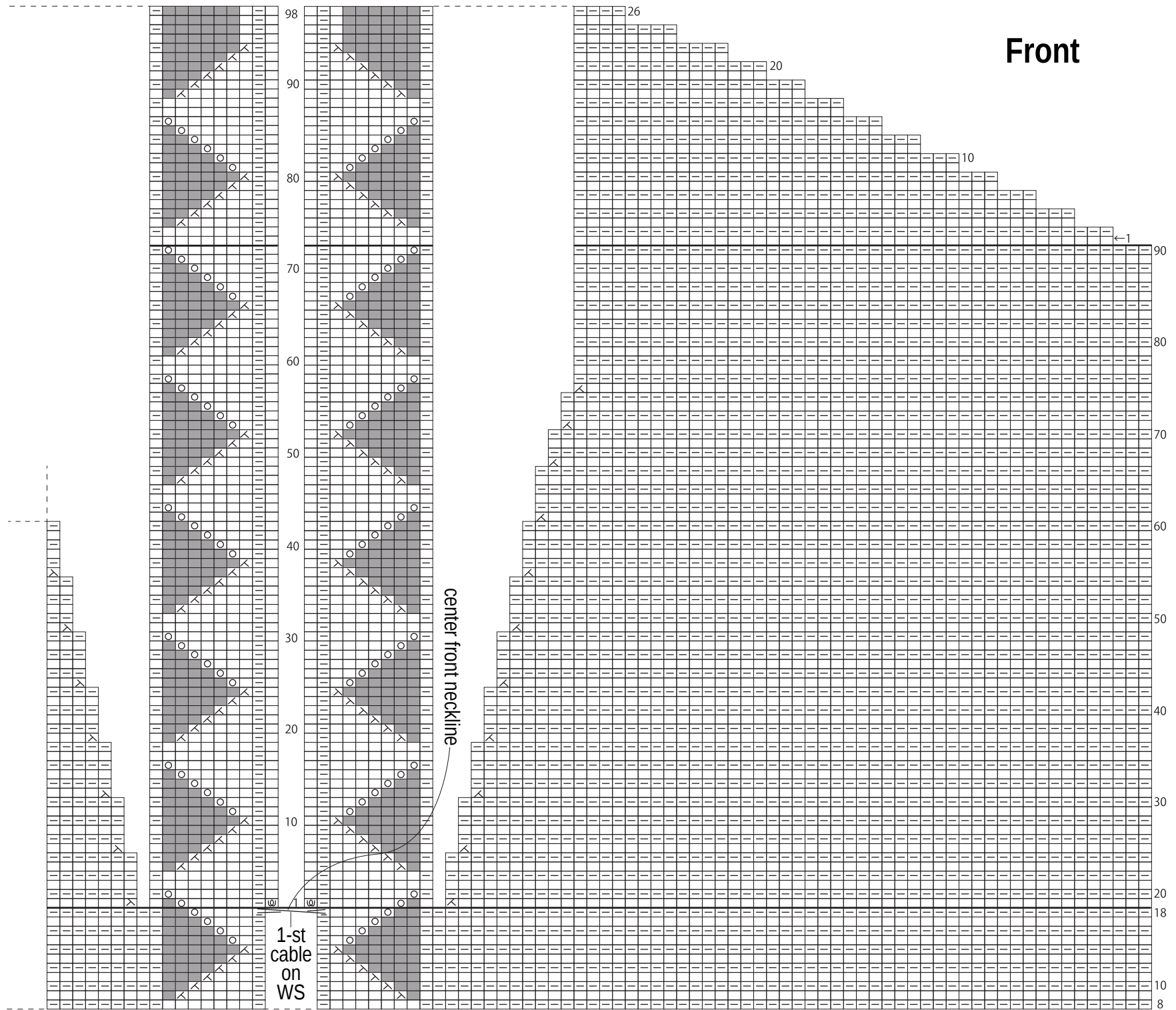


Use QR code on smartphone to view a video tutorial about how to work the pattern stitch.



★ = Match shoulder markings on front & back schematics with right sides facing each other; seam with slip stitch.





# Sleeve

