

# 218aw-18 Christmas Set



## Suggested yarn:

- Pierrot Yarns Soupir Wool [53% merino wool, 31% acrylic, 15% tencel/lyocell, 1% silk; 79 yds/72m per 1.41 oz./40g skein];
  - Santa:
    - color #01 cream beige, 1 skein [small amount]
    - color #03 cassis red, 1 skein [15g]
  - Pierrot Yarns Dream Story [53% wool, 47% acrylic; 131 yds/120m per 1.41 oz./40g skein];
    - Santa: color #07 Neverland blue, 1 skein [small amount]
    - Christmas tree: color #03 Arabian night, 1 skein [10g]
  - Pierrot Yarns Whips [58% acrylic, 30% nylon, 12% wool; 175 yds/160m per 1.41 oz./40g skein];
    - Santa: color #01 whips, 1 skein [small amount]
    - Christmas tree:
      - color #01 whips, 1 skein [10g]
      - color #03 orange gelatin, 1 skein [small amount]
- Santa only: Pierrot Yarns Rabbits [43% mohair, 41% acrylic, 16% nylon; 63 yds/58m per 1.41 oz./40g skein]; color #02 felice, 1 skein [5g]

## Tools/Notions:

- 3.5mm (US E) & 5.0mm (US H) crochet hooks or sizes necessary to achieve gauge
- cardboard
- polyfiber stuffing (approx. 5g/0.18 oz.) each
- Santa only: black & orange embroidery thread

## Finished measurements:

- Please see schematics.

## Gauge (10cm/4" square):

- No gauge information is provided in the original pattern. Use hook sizes necessary to achieve desired fabric thickness & drape.

## Summary

**Body (both items):** Work magic ring to begin, then work in the round according to chart, increasing and decreasing as indicated. Before you finish, insert stuffing. After working last round, cut yarn and thread the tail through all remaining stitches. Cinch top shut and weave in yarn tail.

**Santa beard:** Work foundation chain to begin (note: ch sts needed for turning post are not included in the stitch count), then work sc in joined rounds, decreasing as indicated.

**Tree star:** Work magic ring to begin, then work according to chart. Make 2 identical pieces. Place the two pieces together with wrong sides facing each other & seam around outer edges using whipstitch.

**Finishing (both items):** For Santa, place beard on top of body where indicated in finishing schematic & secure in place at top and bottom of beard using whipstitch. Make a pom-pom and attach to top of Santa's hat. Embroider eyes and nose on Santa's face. For Christmas tree, seam star to top of tree.

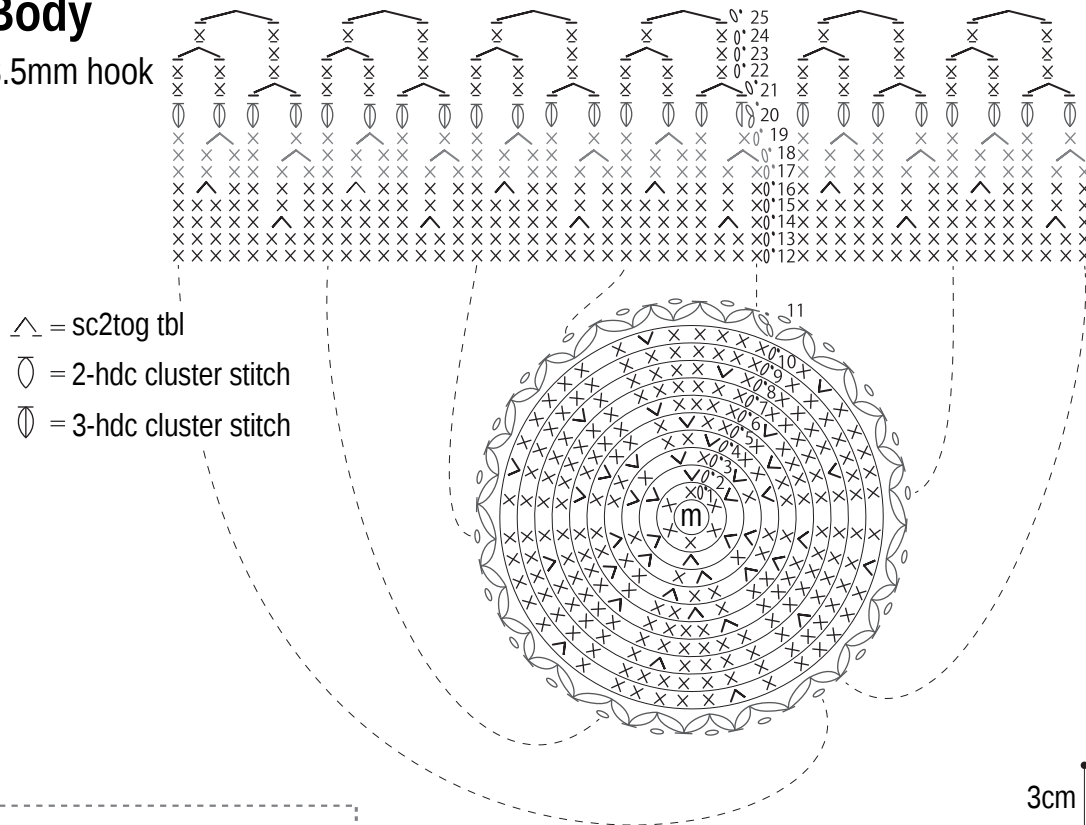
## Abbreviations:

bp = back post    ch = chain    dc = double crochet (US)    hdc = half double crochet (US)    m = magic ring/circle    RS = right side    sc = single crochet (US)    tbl = through back loop only

# Santa

## Body

3.5mm hook

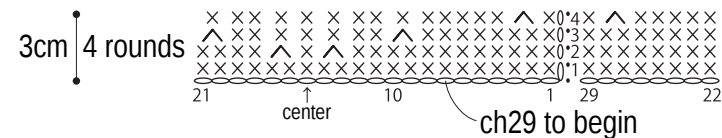


- △ = sc2tog tbl
- = 2-hdc cluster stitch
- ⊖ = 3-hdc cluster stitch


round no.	stitch count	suggested yarn
25	6 (-6 sts)	Soupir Wool color #03
24	12 (work even)	
23	12 (-6 sts)	
22	18 (work even)	
21	18 (-6 sts)	
20	24 (work even)	Whips color #01
19	24 (-6 sts)	Soupir Wool color #01
18	30 (-6 sts)	
17	36 (work even)	
16	36 (-6 sts)	
15	42 (work even)	
14	42 (-6 sts)	Soupir Wool color #03
13	48 (work even)	
12	48 (work even)	
11	48 (work even)	
10	48 (+6 sts)	
9	42 (work even)	Soupir Wool color #03
8	42 (+6 sts)	
7	36 (work even)	
6	36	
5	30	
4	24	
3	18	
2	12	
1	6 (work into magic ring)	

## Beard

sc, 5.0mm hook, Rabbits color #02



Use QR code on smartphone to view a video tutorial about how to work a 3-hdc cluster stitch.

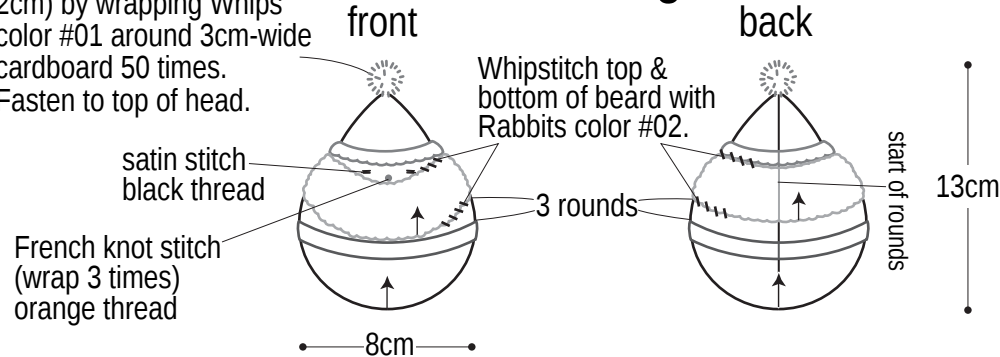


※To view on computer, search on the Pierrot Yarns website or YouTube channel instead.

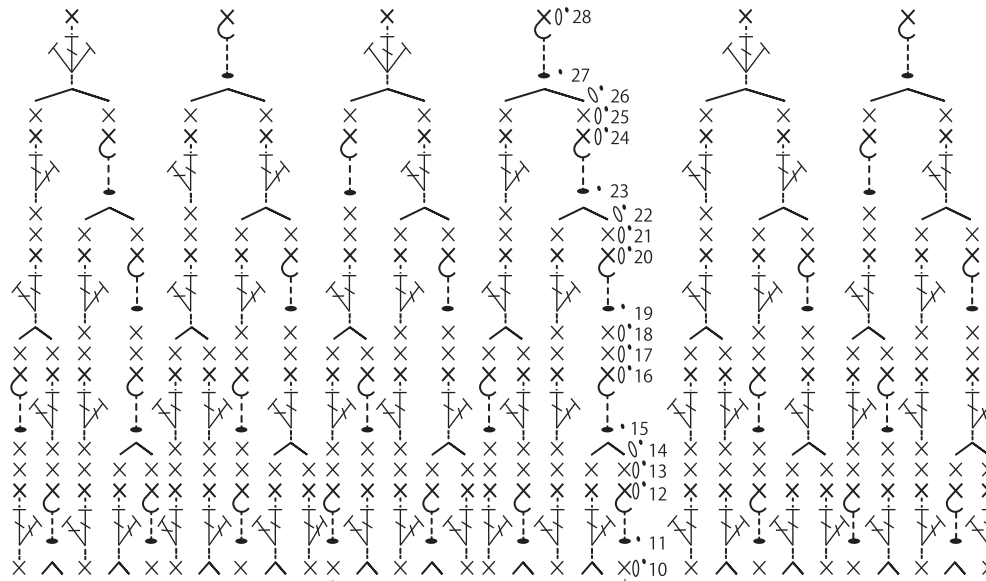
Make pompom (diameter 2cm) by wrapping Whips color #01 around 3cm-wide cardboard 50 times. Fasten to top of head.

## Finishing

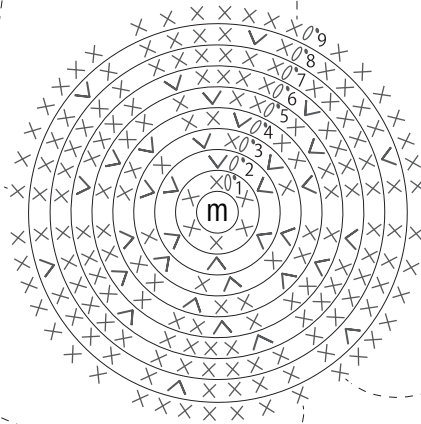


# Christmas Tree

## Body

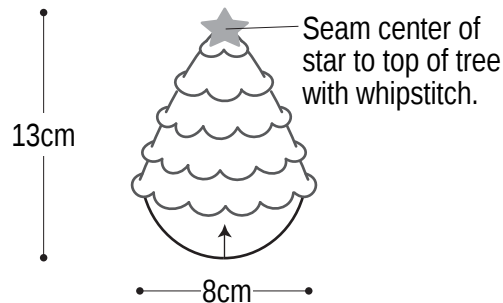


round no.	stitch count	suggested yarn
28	6 (-6 sts)	*Use 2 strands: Dream Story color #03 Whips color #01 5.0mm hook
27	12 (+6 sts)	
26	6 (-6 sts)	
25	12 (work even)	
24	12 (-8 sts)	
23	20 (+8 sts)	
22	12 (-6 sts)	
21	18 (work even)	
20	18 (-12 sts)	
19	30 (+12 sts)	
18	18 (-6 sts)	Soupir Wool color #07 3.5mm hook
17	24 (work even)	
16	24 (-16 sts)	
15	40 (+16 sts)	
14	24 (-6 sts)	
13	30 (work even)	
12	30 (-20 sts)	
11	50 (+20 sts)	
10	30 (-12 sts)	
9	42 (work even)	
8	42 (+6 sts)	
7	36 (work even)	
6	36	
5	30	} +6 sts per round
4	24	
3	18	
2	12	
1	6 (work into magic ring)	



- x = Work sc into hdc or dc 2 rounds below from front side. } rounds 12, 16, 20, 24 & 28
- C = Work bp sc into slip st 2 rounds below.

## Finishing



## Star (make 2) 3.5mm hook, Whips color #03

