

# 217w-07 Gradation Poncho



## Suggested yarn:

- Pierrot Yarns Yuyake no Sora [100% wool; 427 yds/390m per 3.53 oz./100g hank]; color #114 twilight, 4 hanks [310g]

## Tools/Notions:

- 3.3mm (approx. US 4) knitting needles or size necessary to achieve gauge
- 2.5mm (approx. US B or C) crochet hook or size necessary to achieve gauge
- cable needle

## Finished measurements:

- panel width 34cm/13.39"
- back panel length 101.5cm/39.96"
- front panel length 106cm/41.73"
- end piece width 4.5cm/1.77"

## Gauge (10cm/4" square):

- pattern stitch: 27 sts and 35 rows

*Gauge may vary according to individual knitting style. Change needle size if necessary to achieve gauge. Alternatively, rework pattern with your own gauge measurements.*

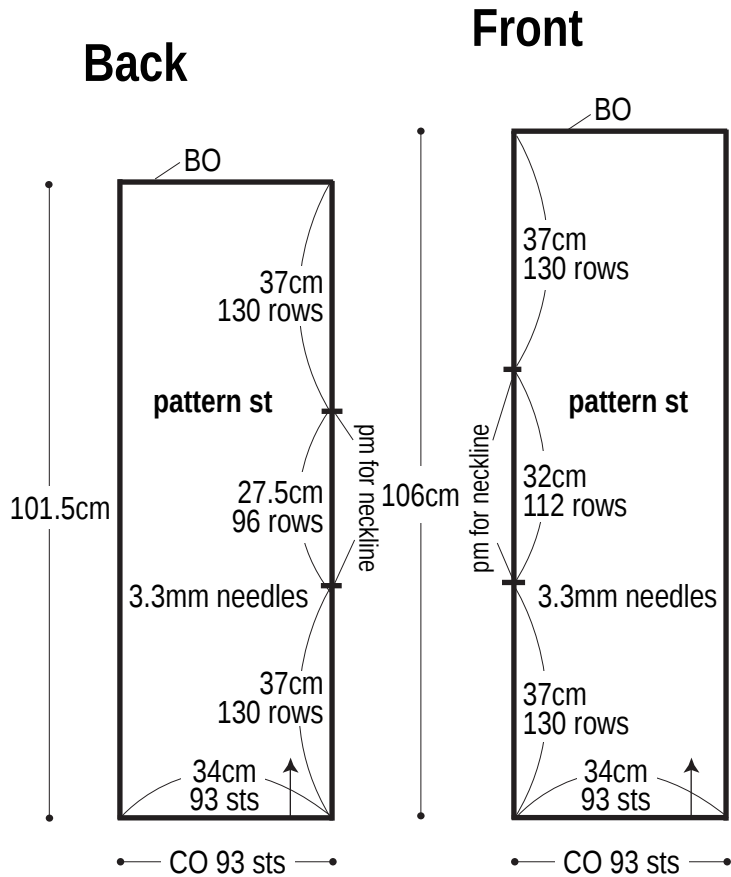
## Summary

**Body (make 2):** Cast on with long-tail cast-on method. Work in pattern stitch, placing markers where indicated in schematics. Bind off.

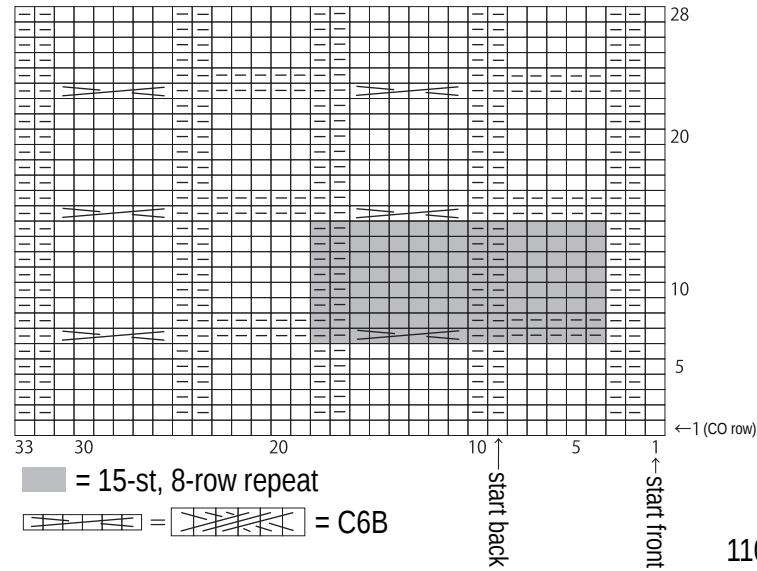
**Finishing:** Seam the two pieces together from marker to cast-on/bind-off edge such that neck area is left unseamed. Crochet edging B in the round around neckline. Crochet edging A along short edges (see finishing schematic).

## Abbreviations:

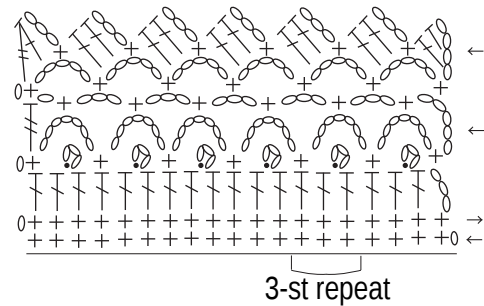
BO = bind off  
CO = cast on  
pm = place marker



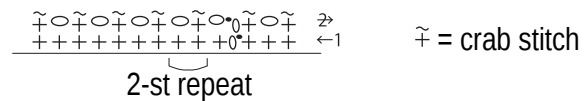
**Pattern stitch** 3.3mm needles □ = □ knit



**Edging A** 2.5mm hook



**Edging B** 2.5mm hook



**Finishing**

