

# 405cover Multi Cover



## Suggested yarn:

- Pierrot Yarns Ramie 100 [100% ramie; 109 yds/100m per 1.41 oz./40g skein];
  - color #20 mauve, 6 skeins [210g]

## Tools/Notions:

- 3.0mm (approx. US C or D) crochet hook or size necessary to achieve gauge

## Finished measurements:

- length 79cm/31.10"
- width 49cm/19.29"

## Gauge:

- 1 motif: 7.5cm/2.95" square

*Gauge may vary according to individual crochet style. Change hook size if necessary to achieve gauge. Alternatively, rework pattern with your own gauge measurements.*

## Summary

✳️**Note:** Like all Japanese patterns, stitch counts given here for foundation chains do not include any chain sts needed for turning posts.

**Shawl:** Work magic ring to begin, then work motif according to chart. Starting from second motif, seam motifs together on final round using slip stitch. Make 60 motifs total.

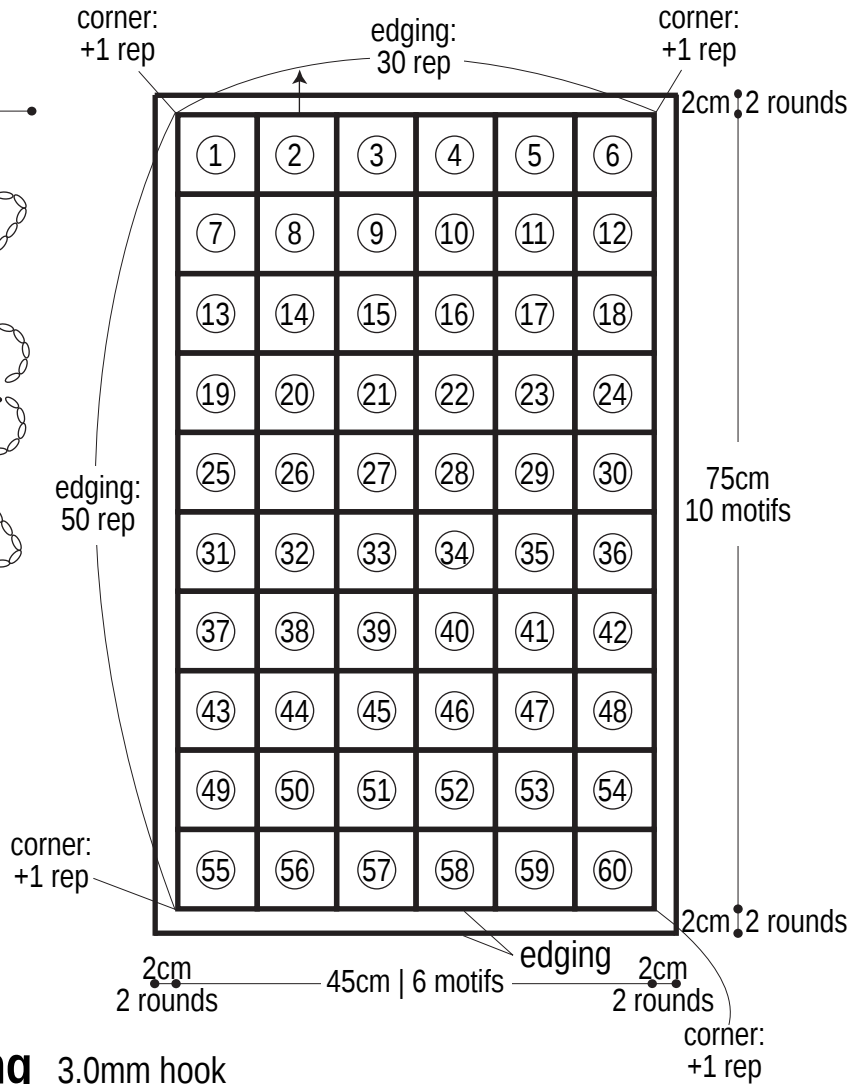
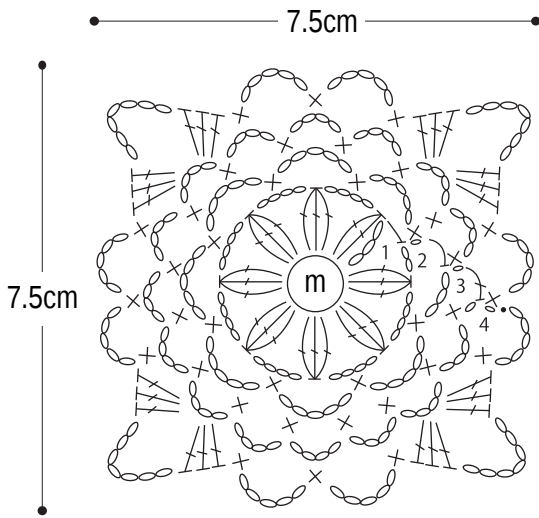
**Finishing:** Crochet 2 rounds of edging along outer edge of shawl.

### Abbreviations:

ch = chain  
m = magic ring/circle  
rep = pattern repeat(s)

## Schematic 3.0mm hook

### Motif 3.0mm hook



### Motif seaming & edging 3.0mm hook

