

Nicol Shawl



Suggested yarn:

- Keito-Zakka Stores nicol [90% wool, 10% merino wool; 224 yds/205m per 1.41 oz./40g skein];
 - color #08 red apple, 6 skeins [220g]

Tools/Notions:

- 3.6mm (approx. US 5) knitting needles or size necessary to achieve gauge

Finished measurements:

- length 180cm/70.87"
- width 29cm/11.42"

Gauge (10cm/4" square):

- pattern stitch: 22.5 sts and 28.5 rows

Gauge may vary according to individual knitting style. Change needle size if necessary to achieve gauge. Alternatively, rework pattern with your own gauge measurements.

Summary

✳️**Note:** entire shawl worked with 2 strands of yarn held together.

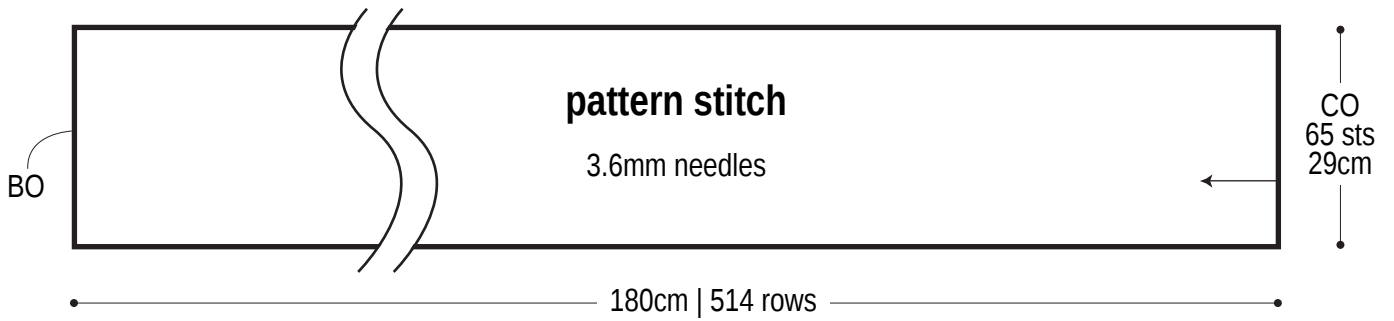
Cast on with long-tail cast-on method. Work in pattern stitch. Bind off all stitches.

Abbreviations:

BO = bind off

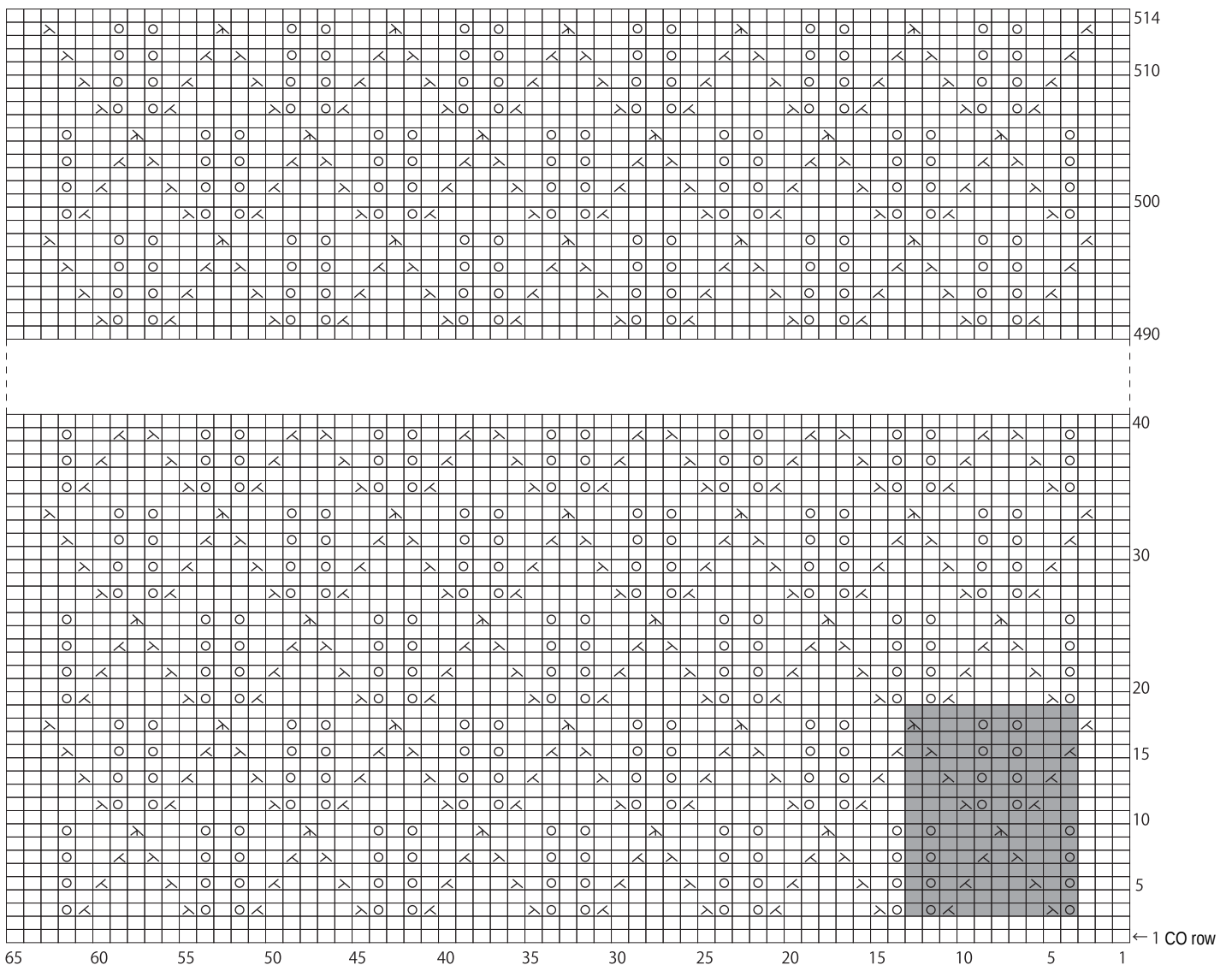
CO = cast on

Shawl schematic



Patternstitch 3.6mm needles

□ = □ knit



■ = 1 repeat = 10 sts & 16 rows