

216w-01 Geometric Pattern Stole



Suggested yarn:

- Pierrot Yarns Soupir Wool Chuboso [53% merino wool, 31% acrylic, 15% tencel/Lyocell, 1% silk; 79 yds/72m per 1.41 oz./40g skein];
 - color #01 sand beige, 3 skeins [110g]
 - color #03 cherry red, 3 skeins [105g]
 - color #04 deep blue, 3 skeins [105g]
 - color #06 camel brown, 3 skeins [100g]

Tools/Notions:

- 4.0mm (US G) crochet hook or size necessary to achieve gauge

Finished measurements:

- length 173cm/68.11"
- width 38.5cm/15.16"

Gauge (10cm/4" square):

- pattern stitch: 20.5 sts and 30.5 rows

Gauge may vary according to individual crochet style. Change hook size if necessary to achieve gauge. Alternatively, rework pattern with your own gauge measurements.

Summary

✳️**Note:** Like all Japanese patterns, stitch counts given here for foundation chains do **not** include any chain sts needed for turning posts.

Work foundation chain to begin. Work according to chart and schematic in pattern stitch. Refer to color sequence key. Work 1 round of sc edging around outer edge of stole.

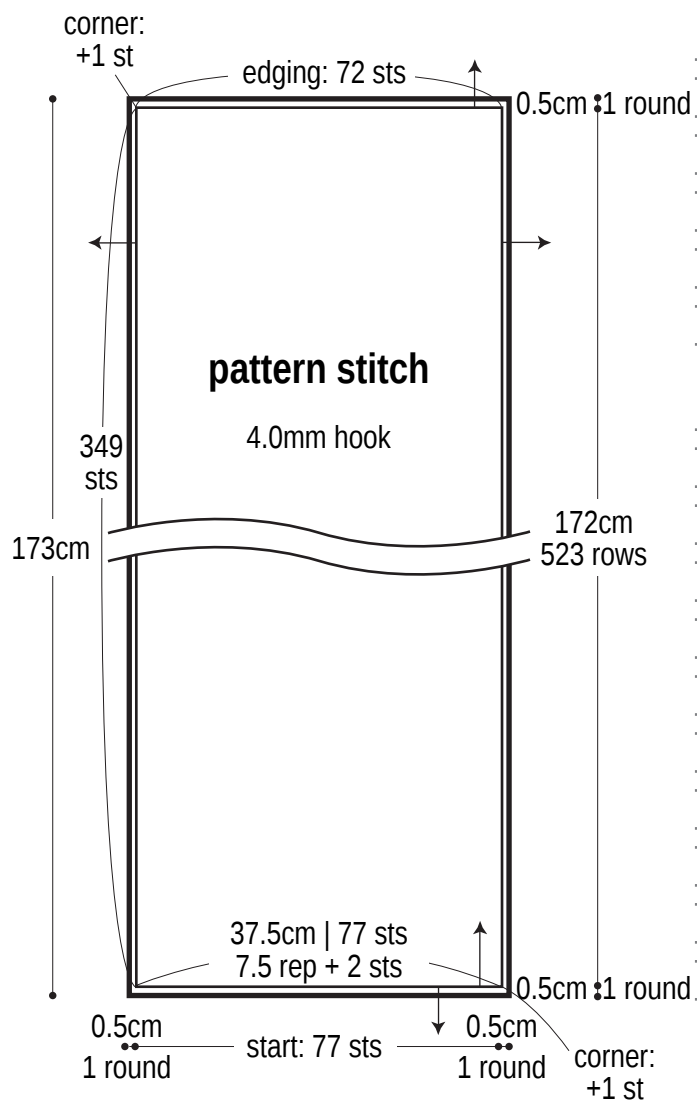
Abbreviations:

ch = chain

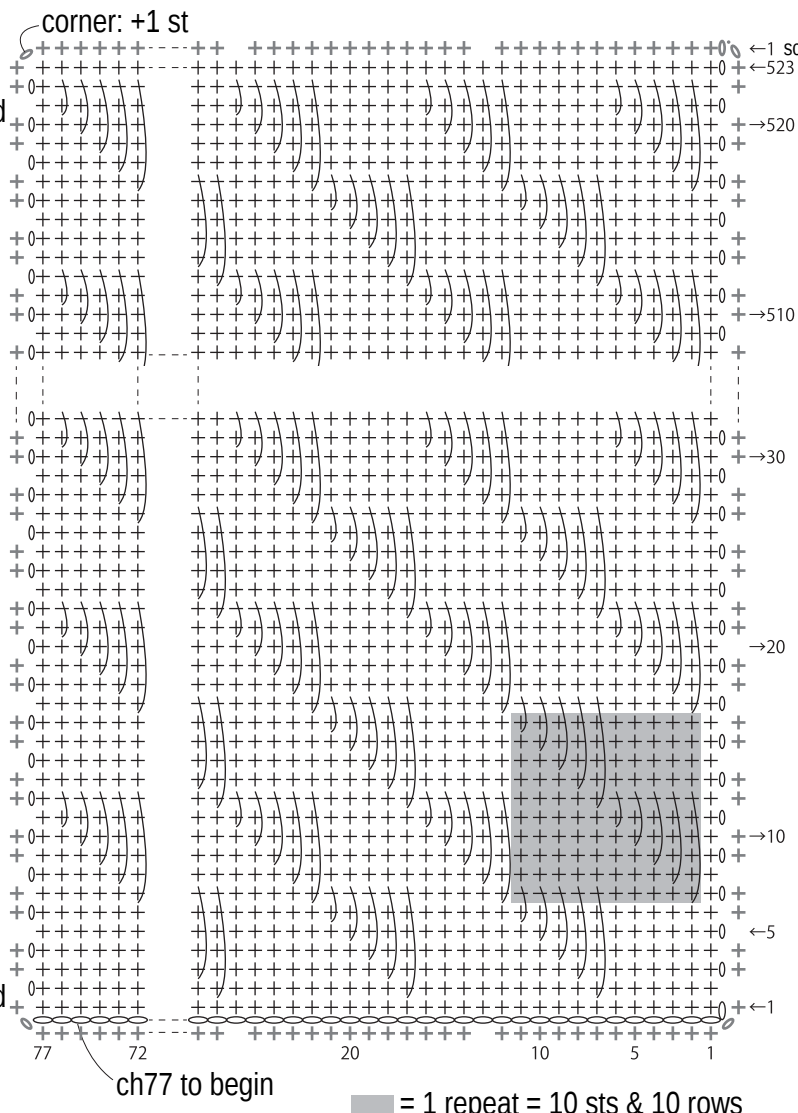
rep = pattern repeat(s)

sc = single crochet (US)

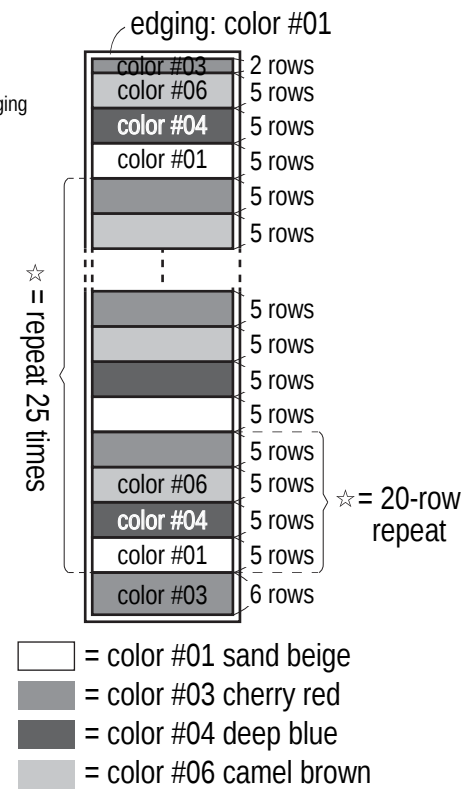
Stole schematic



Pattern stitch 4.0mm hook



Key to colors



Use QR code on smartphone to view a video tutorial about how to work the pattern stitch.

↓

※To view on computer, search on the Pierrot Yarns website or YouTube channel instead.

検索