

548hkc Handkerchief



Suggested yarn:

- Pierrot Yarns honwaka [100% cotton; 120 yds/110m per 1.23 oz./35g skein];
 - version A:
 - color #89 coral pink, 1 skein [12g]
 - color #90 sage blue, 1 skein [15g]
 - version B:
 - color #86 light gray, 1 skein [15g]
 - color #91 baby pink, 1 skein [12g]

Tools/Notions:

- 2.5mm (approx. US B or C) crochet hook or size necessary to achieve gauge

Finished measurements:

- length including border 21cm/8.27"
- width including border 21cm/8.27"

Gauge (10cm/4" square):

- pattern stitch: 25.5 sts and 24.5 rows

Gauge may vary according to individual crochet style. Change hook size if necessary to achieve gauge. Alternatively, rework pattern with your own gauge measurements.

Summary

✿**Note:** Like all Japanese patterns, stitch counts given here for foundation chains do not include any chain sts needed for turning posts.

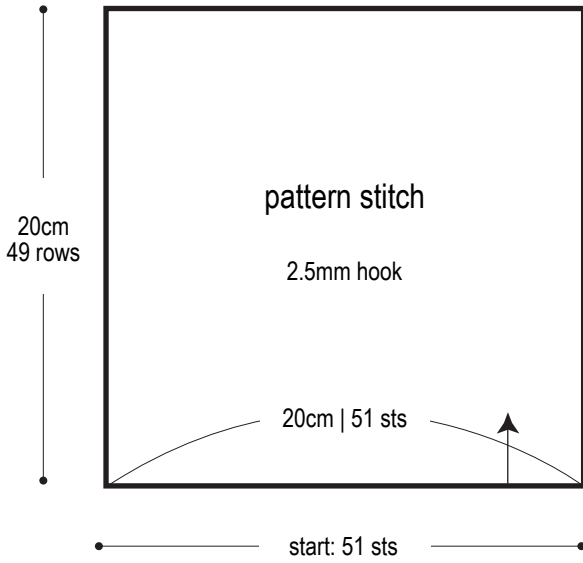
Work foundation chain to begin, then work in pattern stitch, alternating color every row. Work 1 round of edging.

Abbreviations:

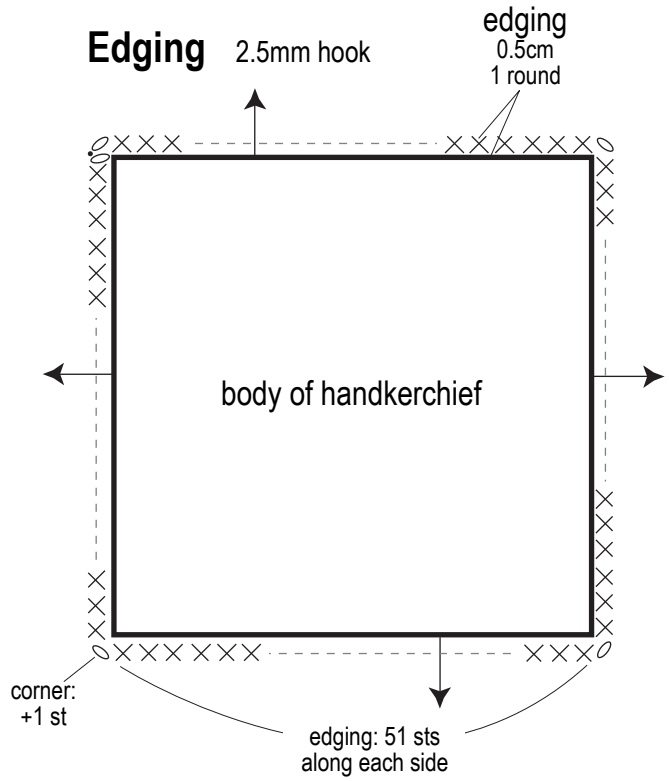
ch = chain

sc = single crochet (US)

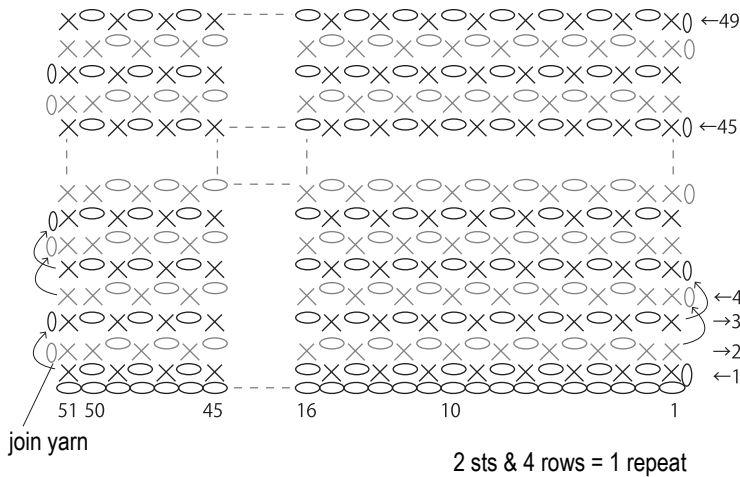
Body of handkerchief



Edging



Pattern stitch 2.5mm hook



Color sequences

		version A	version B
body	—	#90 sage blue	#86 light gray
	—	#89 coral pink	#91 baby pink
edging		#90 sage blue	#86 light gray

*Change yarn color every row, carrying the unused yarn up the side as indicated in chart above.