

# Aillie Flower Pot Cover



## Suggested yarn:

- Hamanaka Aillie [100% rayon; 98 yds/90m per 1.76 oz./50g skein];
  - version A: color #12 yellow, 1 skein [20g]
  - version B: color #32 american cherry, 1 skein [25g]
  - version C: color #29 saffron yellow, 1 skein [25g]

## Tools/Notions:

- 2.5mm (approx. US B or C) crochet hook or size necessary to achieve gauge

## Finished measurements:

- Version A:
  - top circumference 29cm/11.42"
  - bottom circumference 17.25cm/6.80"
  - height 8cm/3.15"
- Versions B & C:
  - top circumference 31cm/12.20"
  - bottom circumference 20.5cm/8.04"
  - height 9cm/3.54"

## Gauge (10cm/4" square):

- single crochet (US) stitch: 16.5 sts and 20 rows

*Gauge may vary according to individual crochet style. Change hook size if necessary to achieve gauge. Alternatively, rework pattern with your own gauge measurements.*

## Summary

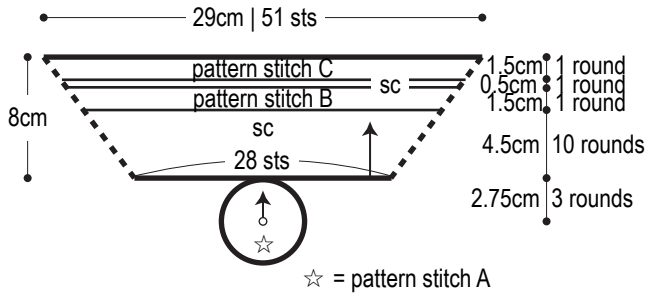
**Bottom:** Work magic ring to begin, then works as follows while increasing as shown in chart: version A = pattern stitch A, versions B & C = pattern stitch A'.

**Sides:** Continuing from bottom, work first round of sides in sc tbl. Continue working sides in joined rounds, increasing as indicated, starting with sc, then in pattern stitch B, then in pattern stitch C.

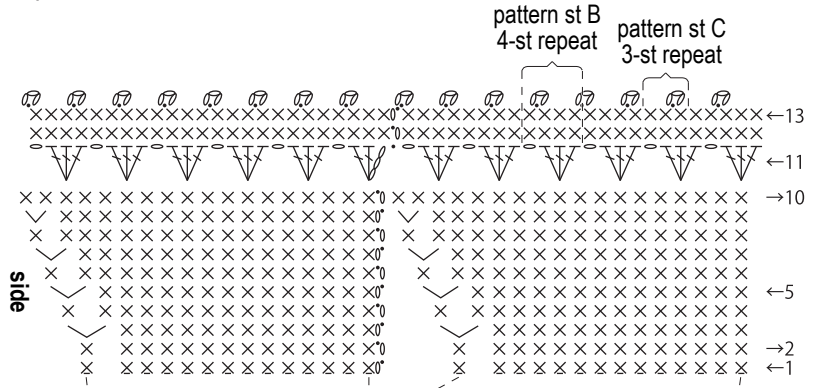
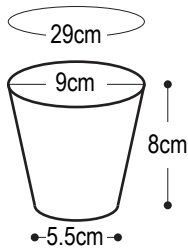
## Abbreviations:

ch = chain  
m = magic ring/circle  
sc = single crochet (US)  
tbl = through back loop only

## Version A 2.5mm hook



### Finished item



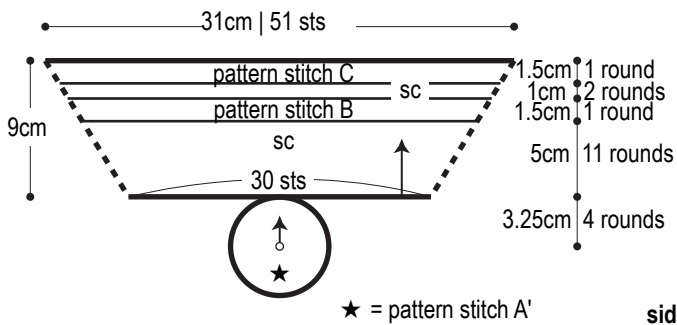
#### side shaping

round no.	stitch count
13	48 sts (16 rep)
12	48 sts (work even)
11	12 rep
10	36 sts (work even)
9	36 sts (+2)
8	34 sts (work even)
7	34 sts (+2)
6	32 sts (work even)
5	32 sts (+2)
4	30 sts (work even)
3	30 sts (+2)
2	28 sts (work even)
1	28 sts (work even in sc tbl)

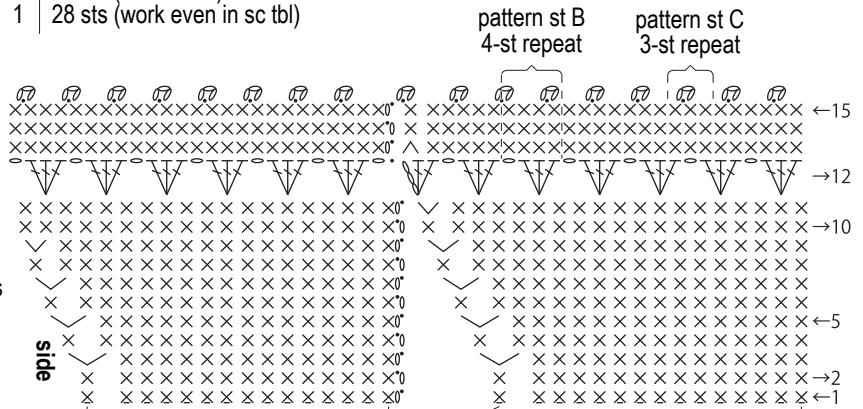
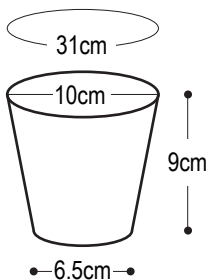
#### bottom shaping

round no.	stitch count
3	28 sts (+2)
2	26 sts (work even)
1	26 sts (work into magic ring)

## Versions B & C 2.5mm hook



### Finished item



#### side shaping

round no.	stitch count
15	51 sts (17 rep)
14	51 sts (work even)
13	51 sts (-1)
12	13 rep
11	39 sts (+1)
10	38 sts (work even)
9	38 sts (+2)
8	36 sts (work even)
7	36 sts (+2)
6	34 sts (work even)
5	34 sts (+2)
4	32 sts (work even)
3	32 sts (+2)
2	30 sts (work even)
1	30 sts (work even in sc tbl)

#### bottom shaping

round no.	stitch count
4	30 sts (+2)
3	28 sts (+2)
2	26 sts (work even)
1	26 sts (work into magic ring)