

# 215w-19 Plain Coasters



## Suggested yarn:

- Pierrot Yarns Cotton Neat S [100% cotton; 104 yds/95m per 1.41 oz./40g skein];
  - version A:
    - color #15 spinach green, 1 skein [3g]
    - color #34 beige, 1 skein [3g]
  - version B: color #35 chestnut brown, 1 skein [6g]
  - version C:
    - color #15 spinach green, 1 skein [2g]
    - color #34 beige, 1 skein [4g]
  - version D:
    - color #02 ivory, 1 skein [3g]
    - color #04 silver gray, 1 skein [3g]
  - version E:
    - color #15 spinach green, 1 skein [4g]
    - color #34 beige, 1 skein [2g]

## Tools/Notions:

- 3.6mm (approx. US F) Tunisian crochet hook or size necessary to achieve gauge
- 2.3mm (approx. US B) crochet hook or size necessary to achieve gauge

## Finished measurements:

- length 9cm/3.54"
- height 9cm/3.54"

## Gauge (10cm/4" square):

- Tunisian simple stitch (Tss): 20 sts and 14 rows
- striped Tunisian simple stitch (Tss): 20 sts and 14 rows

*Gauge may vary according to individual crochet style. Change hook size if necessary to achieve gauge. Alternatively, rework pattern with your own gauge measurements.*

## Summary

✳️**Note:** Like all Japanese patterns, stitch counts given here for foundation chains do **not** include any chain sts needed for turning posts.

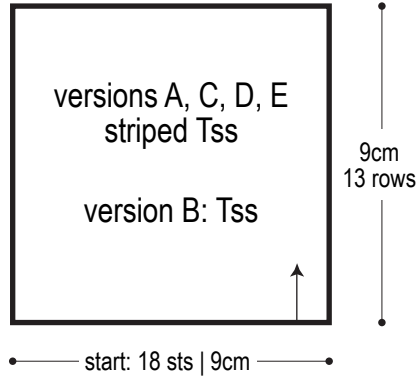
Work foundation chain to begin. For versions A, C, D, and E, work in striped Tss (refer to schematics for color sequences). For version B, work in Tss in just one color. Bind off with slip stitch bind-off method using same color as last row.

## Abbreviations:

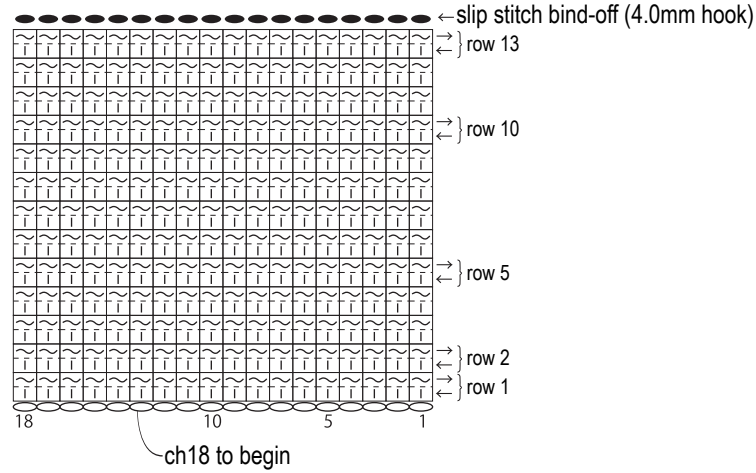
ch = chain      Tss = Tunisian simple stitch

# Coaster

3.6mm Tunisian hook



# Tss 3.6mm Tunisian hook



Use QR code on smartphone to view a video tutorial about Tss.

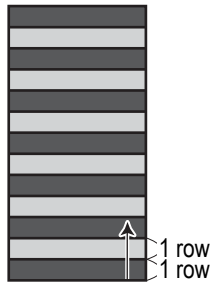
↓

※To view on computer, search on the Pierrot Yarns website or YouTube channel instead.

検索

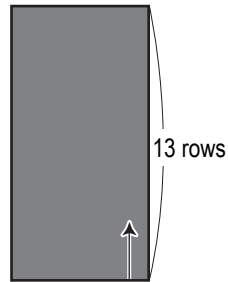
## Color sequences

version A



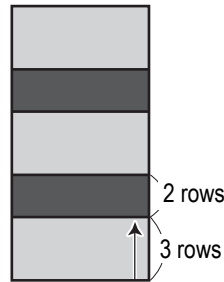
■ = color #15 spinach green  
■ = color #34 beige

version B



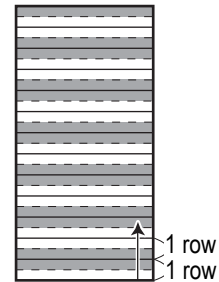
■ = color #35 chestnut brown

version C



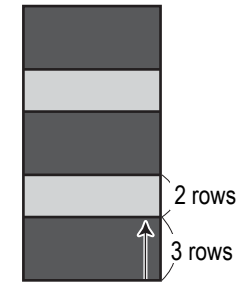
■ = color #15 spinach green  
■ = color #34 beige

version D



■ = color #02 ivory  
■ = color #04 silver gray

version E



■ = color #15 spinach green  
■ = color #34 beige