

215w-22 Washing Tool



Suggested yarn:

• Pierrot Yarns Zakka Acrylic Namibuto [100% acrylic; 77 yds/70m per 0.88 oz./25g skein];

• version A:

- color #02 off-white, 1 skein [10g]
- color #22 black, 1 skein [15g]

• version B:

- color #108 magenta, 1 skein [10g]
- color #109 emerald, 1 skein [15g]

• version C:

- color #101 creamed corn, 1 skein [10g]
- color #103 ice gray, 1 skein [15g]

Tools/Notions:

- 5.7mm (approx. US I) Tunisian crochet hook or size necessary to achieve gauge
- 5.0mm (US H) crochet hook or size necessary to achieve gauge

Finished measurements:

- Please refer to schematics.

Gauge (10cm/4" square):

- Tunisian simple stitch: 15 sts and 13.5 rows

Gauge may vary according to individual crochet style. Change hook size if necessary to achieve gauge. Alternatively, rework pattern with your own gauge measurements.

Summary

✳️**Note:** Like all Japanese patterns, stitch counts given here for foundation chains do **not** include any chain sts needed for turning posts.

Body of scrubber: Work foundation chain to begin, then work Tss in stripes. For final row, work slip stitch bind-off with same color as row 18.

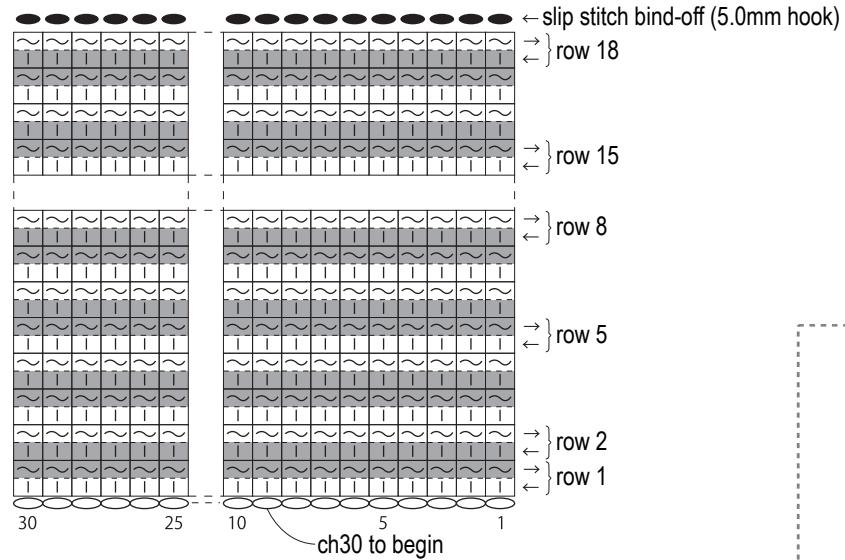
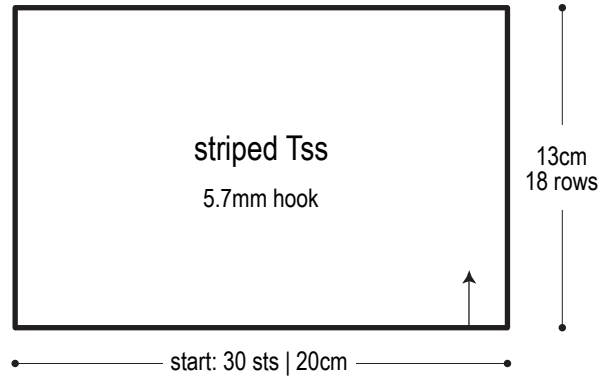
Finishing: With wrong sides facing each other, seam side with mattress stitch. Work sc edging in the round along foundation edge and bind-off edge using same color used for foundation chain. Join yarn and work loop of chain stitches with edging color.

Abbreviations:

ch = chain sc = single crochet (US) Tss = Tunisian simple stitch

Striped Tss 5.7mm hook

Body of scrubber



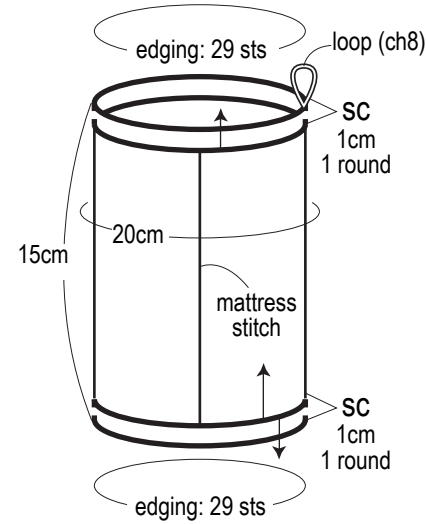
Use QR code on smartphone to view a video tutorial on Tss.



※To view on computer, search on the Pierrot Yarns website or YouTube channel instead.



Finishing 5.0mm hook

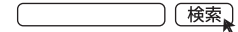


※Use same color yarn for mattress stitch seam as for foundation chain.

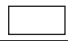

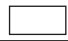
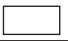
Use QR code on smartphone to view a video tutorial on mattress stitch.



※To view on computer, search on the Pierrot Yarns website or YouTube channel instead.



Color sequence

	body		sc	loop
				
A	#22 black	#2 off-white	#22 black	#22 black
B	#109 emerald	#108 magenta	#109 emerald	#109 emerald
C	#103 ice gray	#101 creamed corn	#103 ice gray	#103 ice gray