

360sh Whips English Rib Shawl



Suggested yarn:

- Pierrot Yarns Whips [58% acrylic, 30% nylon, 12% wool; 175 yds/160m per 1.41 oz./40g skein]; color #08 black beans, 6 skeins [220g]

Tools/Notions:

- 4.8mm (approx. US 8) knitting needles or size necessary to achieve gauge

Finished measurements:

- width 45cm/17.72"
- length (including fringe) 200cm/78.74"

Gauge (10cm/4" square):

- pattern stitch: 17.5 sts and 22.5 rows

Gauge may vary according to individual knitting style. Change needle size if necessary to achieve gauge. Alternatively, rework pattern with your own gauge measurements.

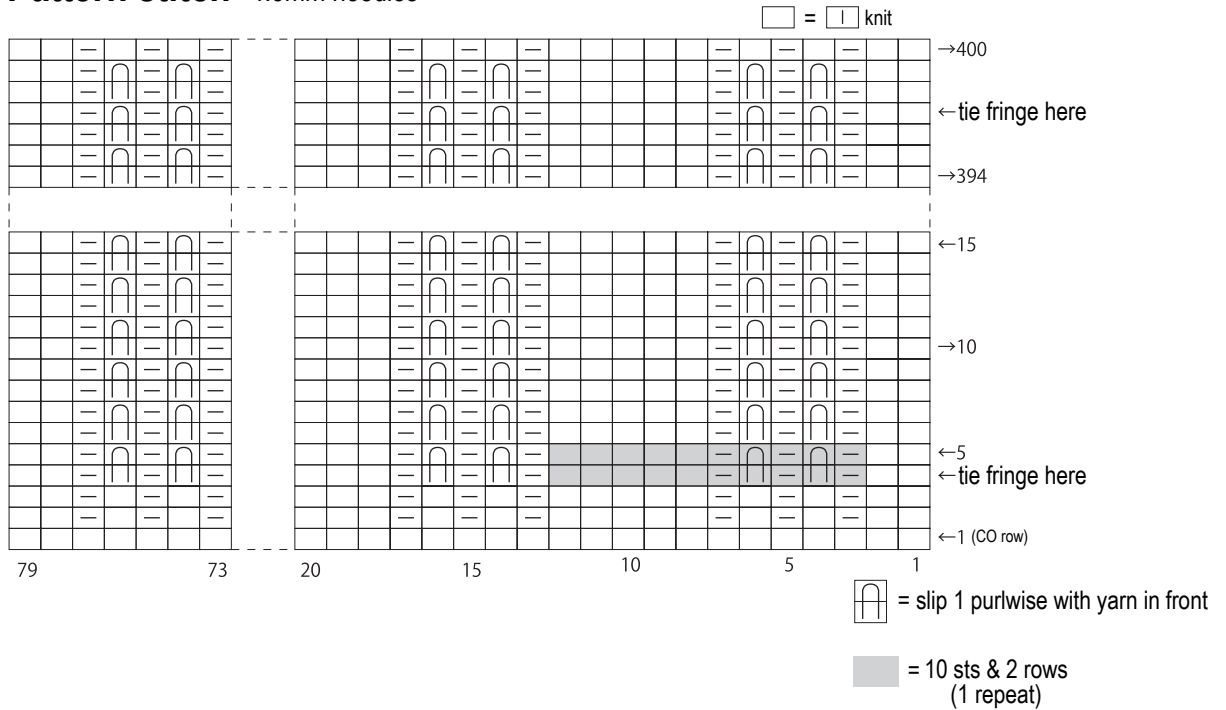
Summary

Cast on with long-tail cast-on method. Work in pattern stitch. Bind off all stitches. Tie fringe to rows 4 and 397 in 19 places each (see finishing schematic). Trim ends of fringe to neaten up.

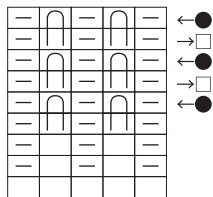
Abbreviations:

BO = bind off
CO = cast on
k = knit stitch
p = purl stitch
rep = pattern repeat(s)

Pattern stitch 4.8mm needles



English rib



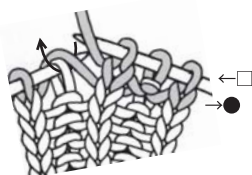
① Start at row marked
●. P1, slip 1 purlwise with yarn in front.



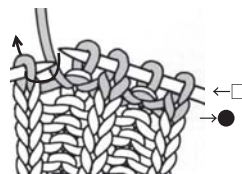
② P1, noting how
YO forms as shown.



③ Slip 1 purlwise with yarn in front
(just like second stitch). Repeat
steps 2 and 3 across entire ● row.



④ Turn work and begin row
marked □. K1, then purl
next st together with YO.

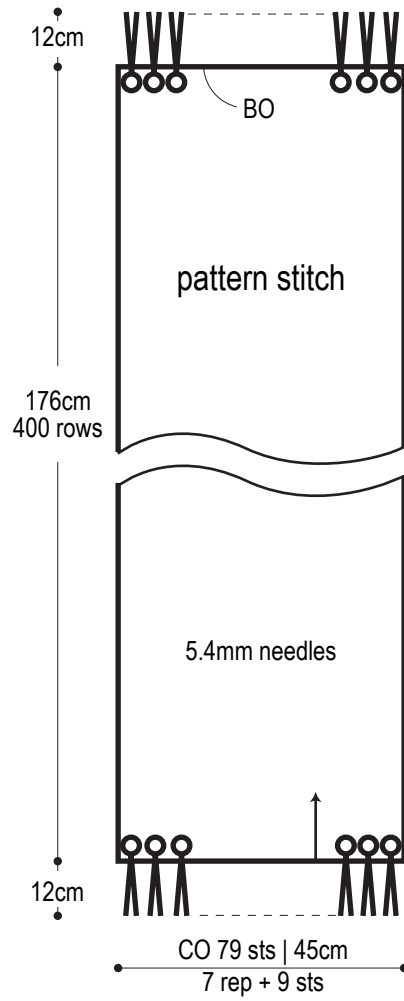


⑤ K1. Repeat steps 2 and
3 across entire □ row.

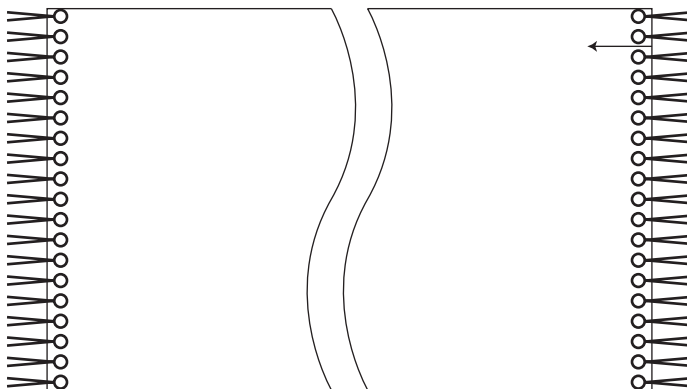


⑥ This sample shows
5 rows of English rib.

Shawl schematic



Finishing



*Make fringe by folding 18 strands (each 33cm long) in two, then tie to rows 4 and 397 in 19 places each as indicated.