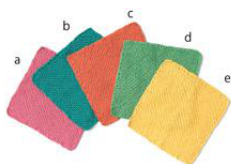


# 215s-18 Cotton Handkerchief



## Suggested yarn:

- Pierrot Yarns Marshmallow Cotton [100% cotton; 153 yds/140m per 1.41 oz./40g skein];
  - version A: color #03 pink, 1 skein [20g]
  - version B: color #07 green, 1 skein [20g]
  - version C: color #04 orange, 1 skein [20g]
  - version D: color #06 light green, 1 skein [20g]
  - version E: color #05 yellow, 1 skein [20g]

## Tools/Notions:

- 3.6mm (approx. US 5) knitting needles or size necessary to achieve gauge
- 2.3mm (approx. US B) crochet hook or size necessary to achieve gauge

## Finished measurements:

- length 18cm/7.09"
- width 18cm/7.09"

## Gauge (10cm/4" square):

- garter stitch: 20 sts and 35.5 rows

*Gauge may vary according to individual knitting style. Change needle size if necessary to achieve gauge. Alternatively, rework pattern with your own gauge measurements.*

## Summary

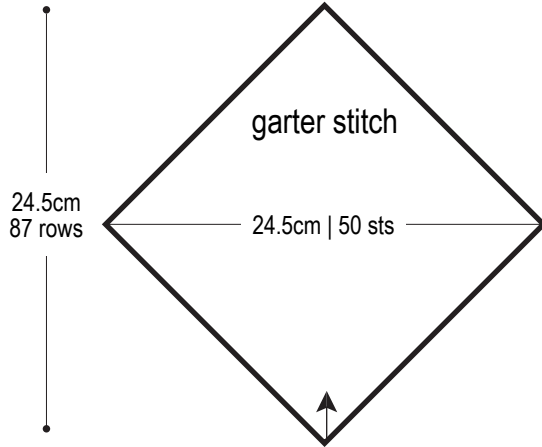
With 2 strands of yarn held together, cast on 2 stitches with long-tail cast-on method. Continue working according to chart with 2 strands of yarn held together, increasing at every other edge. When you reach the widest point, begin decreasing instead of increasing. With 1 strand of yarn only, crochet 1 round of sc edging.

## Abbreviations:

BO = bind off    CO = cast on    k = knit    k2tog = knit 2 stitches together    ssk = slip, slip, knit    sc = single crochet (US)

### Handkerchief schematic

3.6mm needles, 2 strands of yarn



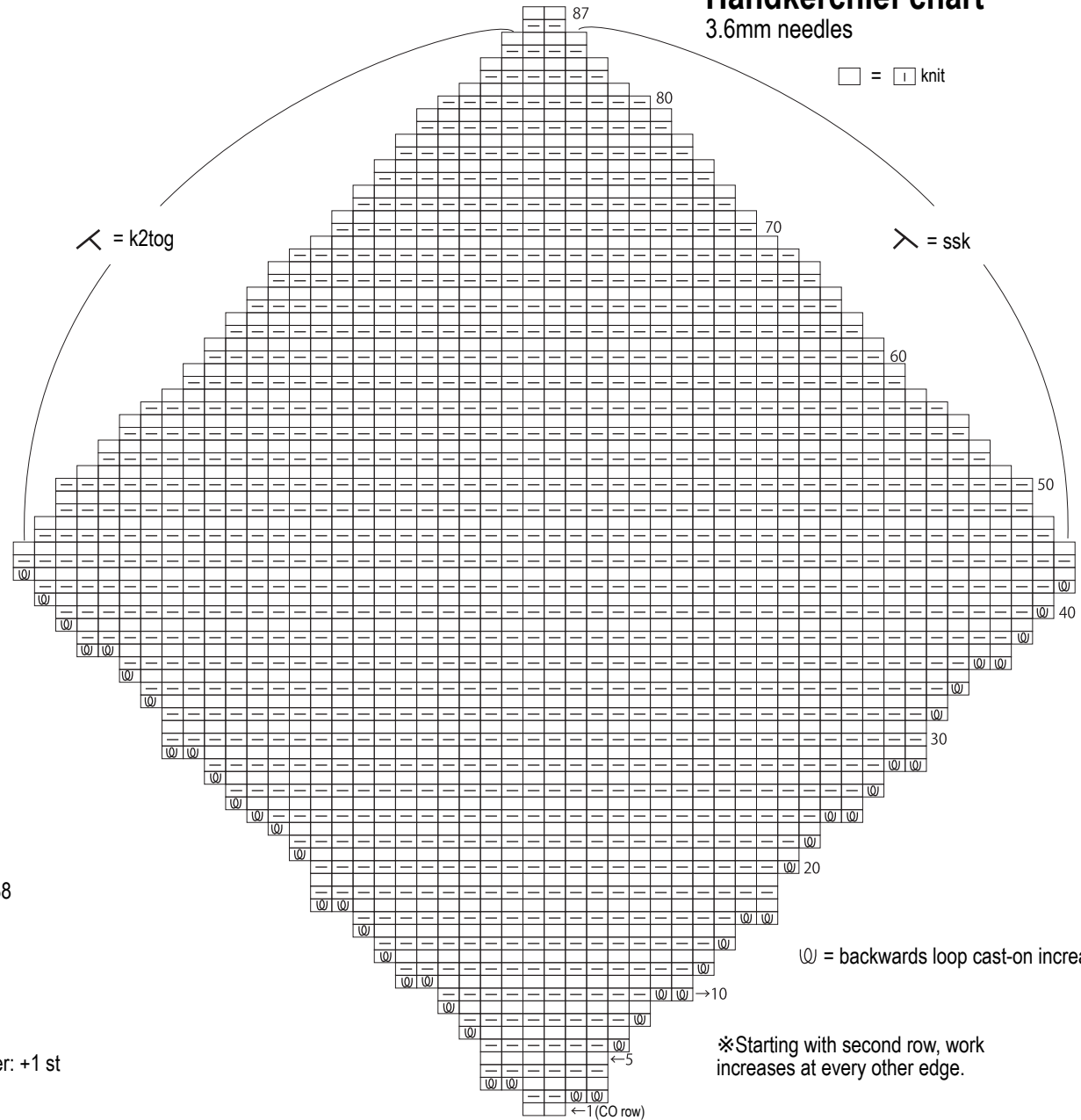
### Handkerchief chart

3.6mm needles

☐ = 1 knit

↙ = k2tog

↘ = ssk



⊖ = backwards loop cast-on increase

※ Starting with second row, work increases at every other edge.

### Edging

2.3mm hook, 1 strand of yarn

