

Donut 2-way Shawl



Suggested yarn:

- Keito Zakka Stores Ande Donut [70% acrylic, 30% wool; 185 yds/169m per 1.76 oz./50g skein]; color #106 raspberry, 4 skeins [200g]

Tools/Notions:

- 3.5mm (US E) crochet hook or size necessary to achieve gauge
- 6 buttons (15mm/0.59")

Finished measurements:

- width 42cm/16.54"
- length 126cm/49.26"

Gauge (10cm/4" square):

- pattern stitch: 18 sts and 10 rows

Gauge may vary according to individual crochet style. Change hook size if necessary to achieve gauge. Alternatively, rework pattern with your own gauge measurements.

Summary

Work foundation chain to begin, then work in pattern stitch. Continue to edging A without cutting yarn. Join yarn to other end (at foundation chain) and work edging A at that end as well. Work edging B at each long side, making buttonholes where indicated. Crochet buttons and fasten to shawl.

Abbreviations:

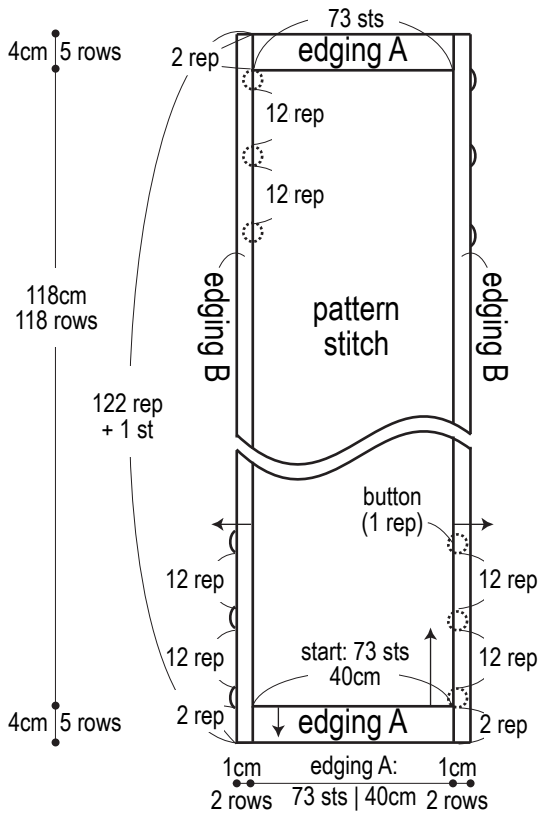
ch = chain

m = magic ring / magic circle

rep = pattern repeat(s)

Shawl schematic

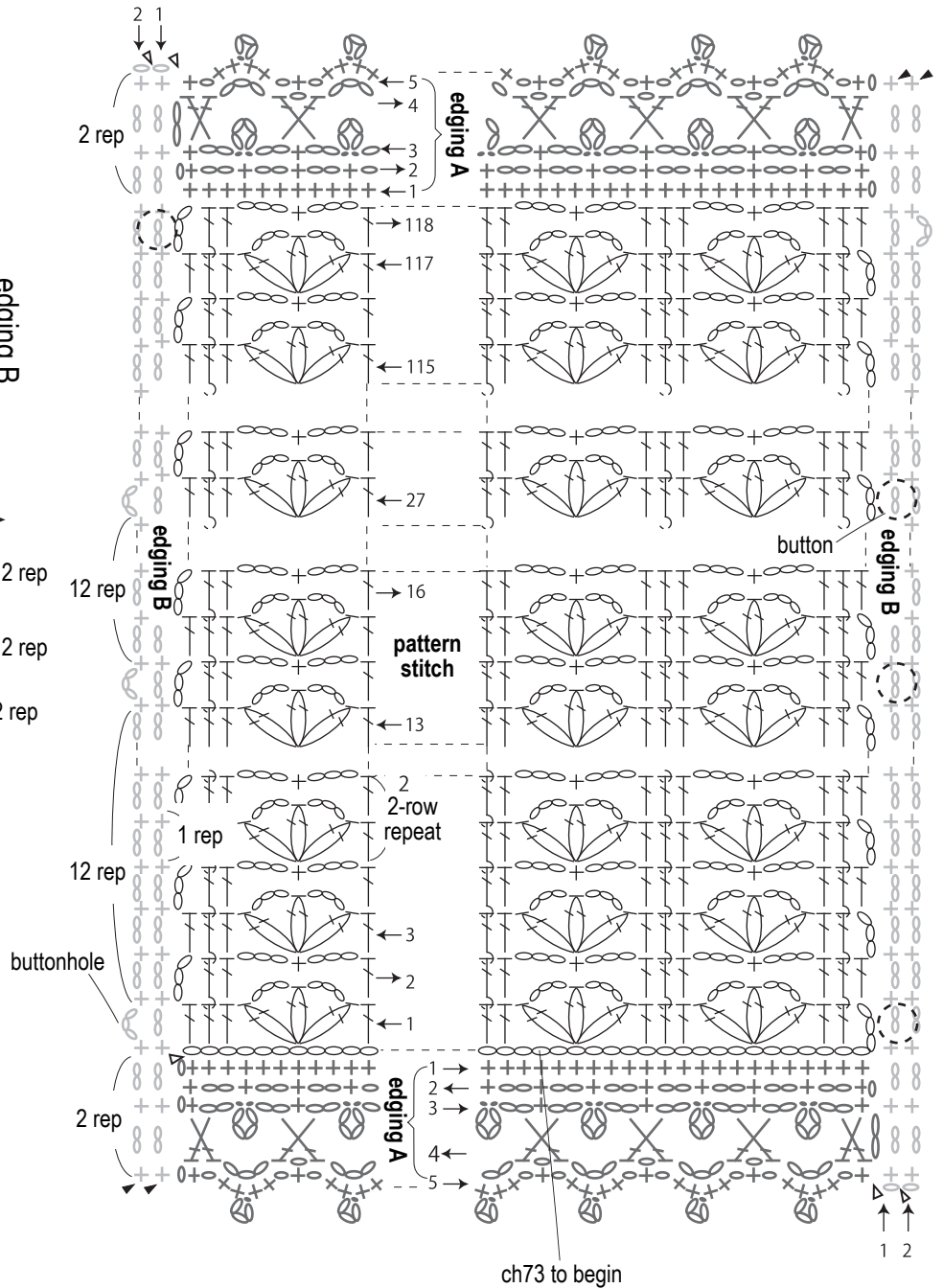
3.5mm hook



◁ = join yarn
 ▲ = cut yarn

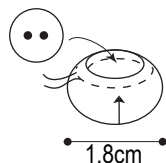
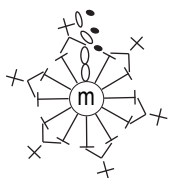
Shawl chart

3.5mm hook



Amigurumi buttons (make 6)

3.5mm hook



※ Insert button (15mm diameter), then thread yarn through all stitches on final round and cinch shut.