

214w-24 Tuck Stitch Cap



Suggested yarn:

- PurpleYarns Pepi [62% acrylic, 26% polyester, 12% mohair; 55yds/50m per 1.76oz/50g skein];
 - version A: color #01 rhythm, 2 skeins [70g]
 - version B: color #03 silvio, 2 skeins [70g]
 - version C: color #06 coffret, 2 skeins [70g]

Tools/Notions:

- 8.0mm (US 11) knitting needles or size necessary to achieve gauge

Finished measurements:

- head circumference 50cm/19.69"
- depth 24cm/9.45"

Gauge (10cm/4" square):

- pattern stitch: 10 sts and 24 rows

Gauge may vary according to individual knitting style. Change needle size if necessary to achieve gauge. Alternatively, rework pattern with your own gauge measurements.

Summary

Body of hat: Cast on with long-tail cast-on method. Work in pattern stitch. After last row, cut yarn and thread tail through all remaining stitches, cinching top of hat shut.

Finishing: Seam sides of hat with mattress stitch.

Abbreviations:

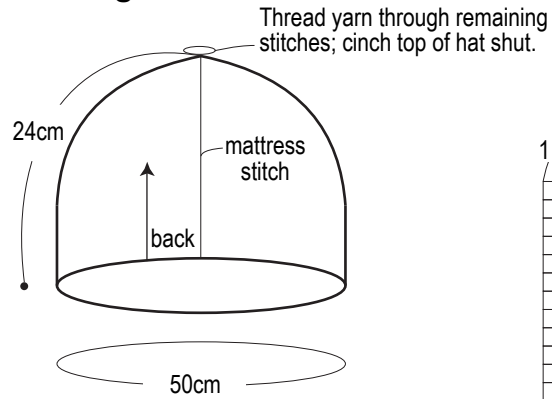
CO = cast on

RE = row(s) even

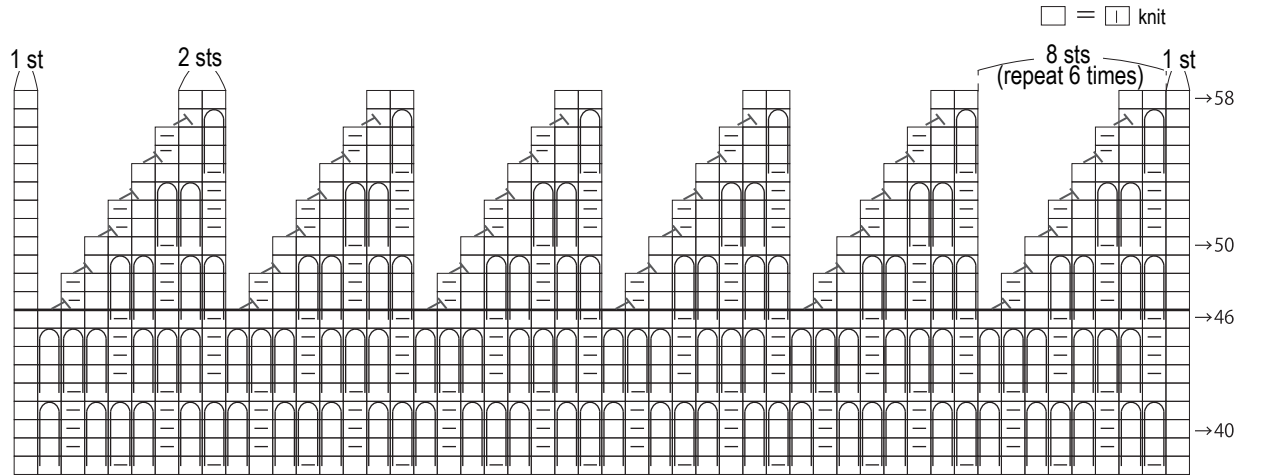
rep = pattern repeat(s)

##-##-## = rows-stitches-places-times [for evenly spaced decreases across entire width of an item]. For example, 1-2-3-4 means "every 1 row, decrease 2 stitches in each of 3 places across the row; do this 4 times total."

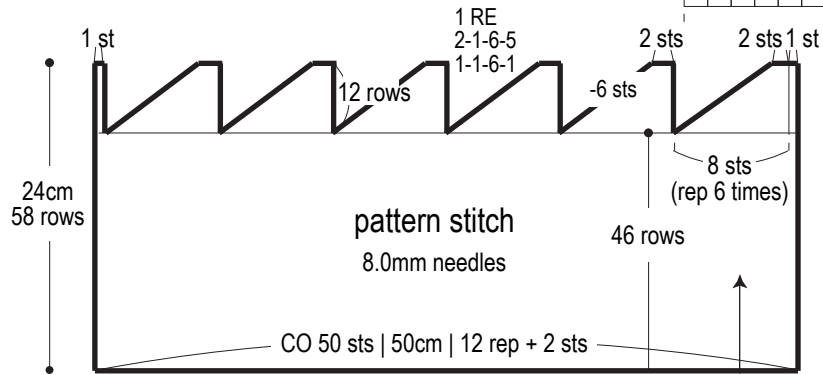
Finishing



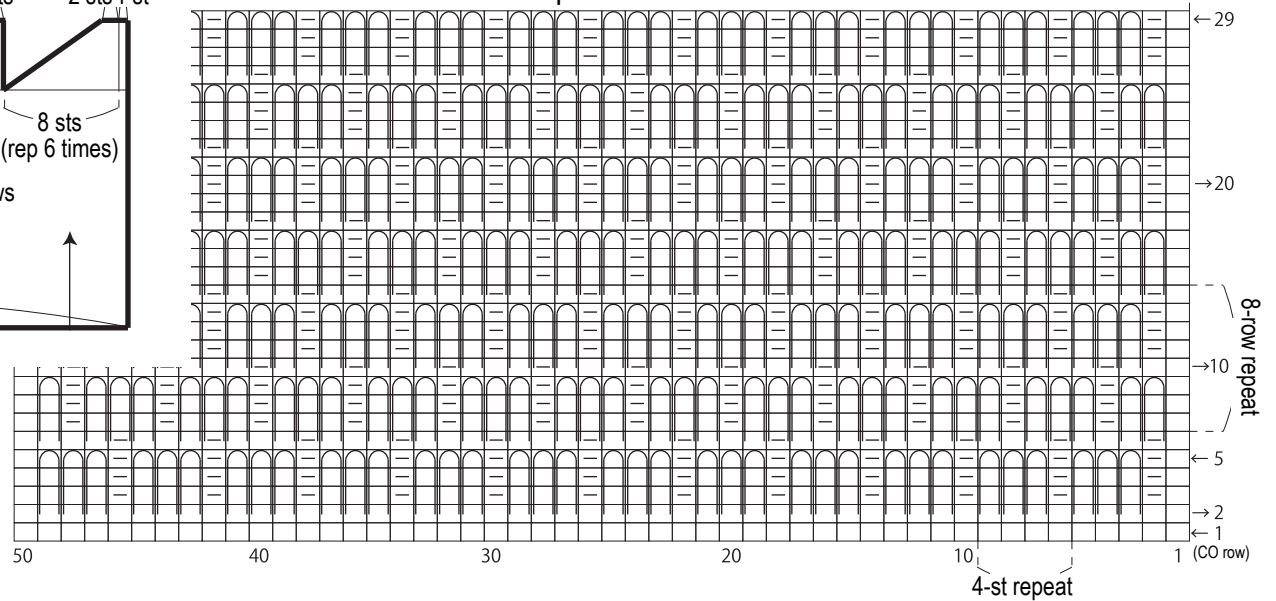
Hat chart



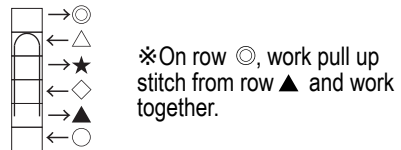
Hat schematic



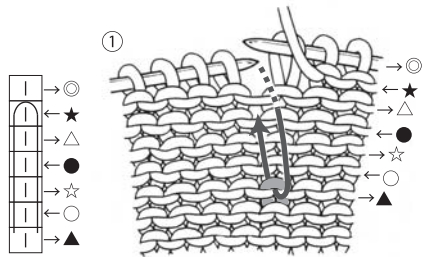
pattern stitch 8.0mm needles



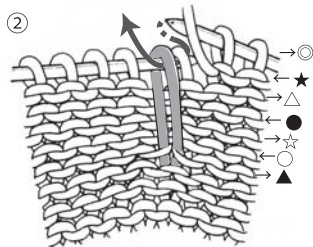
Slip stitch brioche (see page 3)



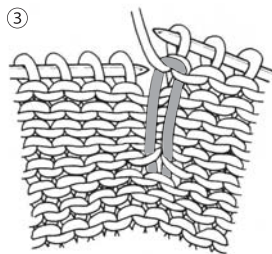
Slip stitch brioche instructions



Working symbols in order, temporarily slip the st on ⊙ row to the right needle without knitting. Insert the left needle into the st on ▲ row in the direction the arrow points.



Return the st slipped onto the right needle to the left needle. Work together with the stitch slipped from several rows beneath in step ①.



One completed slip stitch brioche pattern repeat.