

# 214w-15 Liberty Cape



## Suggested yarn:

- Pierrot Yarns Norm [49% wool, 48% acrylic, 3% nylon; 66 yds/60m per 3.53oz/100g skein]; color #04 spicy red, 3 skeins [240g]

## Tools/Notions:

- 15.0mm (US 19) knitting needles or size necessary to achieve gauge

## Finished measurements:

- width 30cm/11.81"
- circumference 86cm/33.86"

## Gauge (10cm/4" square):

- pattern stitch: 6.5 sts and 12 rows

*Gauge may vary according to individual knitting style. Change needle size if necessary to achieve gauge. Alternatively, rework pattern with your own gauge measurements.*

## Summary

✳️**Note:** because the suggested yarn may contract, take care when knitting. Also, as gauge of drop stitch may vary according to knitter, finished size may vary.

**Cape:** Cast on with long-tail cast-on method. Work in pattern stitch. Bind off from wrong side.

**Finishing:** Seam short ends with mattress stitch.

## Abbreviations:

BO = bind off

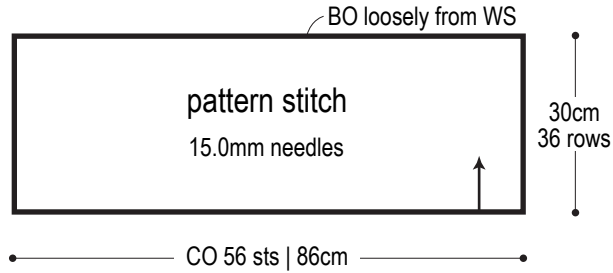
CO = cast on

k = knit

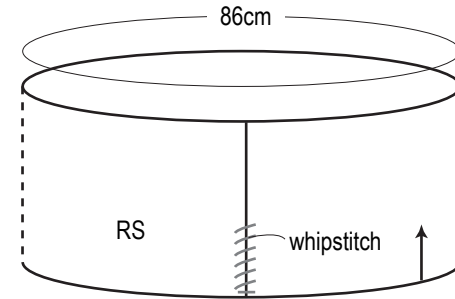
RS = right side

WS = wrong side

# Cape schematic

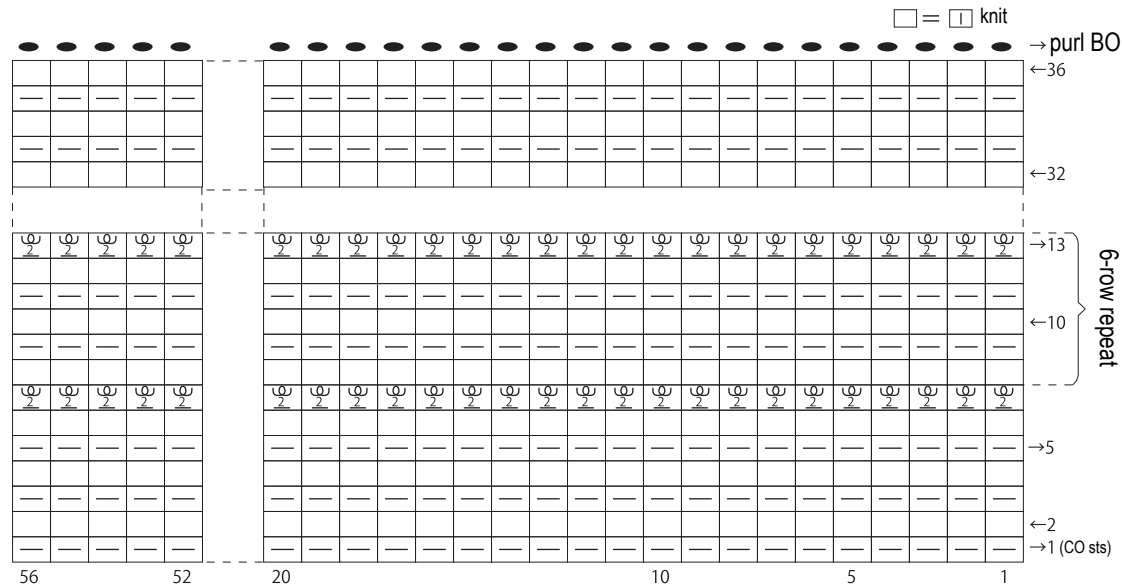


# Finishing




# Pattern stitch

15.0mm needles



$$\left[ \begin{array}{c} \text{⓪} \\ 2 \end{array} \right] = \left[ \begin{array}{c} \text{⓪⓪} \\ 2 \end{array} \right] = \text{2-wrap drop stitch}$$

Use this QR code on your smartphone to view a video about how to work the drop stitch pattern.



※To view on computer, search on the Pierrot Yarns website or YouTube channel instead.

検索

※Purl sts from CO are RS.