

214a-02 Stranded Sweater



Suggested yarn:

- Pierrot Yarns Fine Merino [100% merino; 103yds/94m per 1.06oz/30g skein];
 - color #201 off-white, 8 skeins [230g]
 - color #222 pink, 1 skein [10g]
 - color #225 Nile green, 1 skein [15g]
 - color #231 cyber pink, 1 skein [15g]
 - color #232 earth blue, 3 skeins [75g]

Tools/Notions:

- 3.6mm (approx. US 5) and 3.9mm (approx. US6) knitting needles or sizes necessary to achieve gauge
- 3.6mm (approx. US 5) and 3.9mm (approx. US6) double-pointed knitting needles or sizes necessary to achieve gauge

Finished measurements:

- bust 98cm/38.58"
- center back neck-to-cuff 76.5cm/30.12"
- back length 58.5cm/23.03"

Gauge (10cm/4" square):

- stockinette stitch: 22.5 sts and 28 rows
- stranded pattern stitch: 22.5 sts and 27 rows

Gauge may vary according to individual knitting style. Change needle size if necessary to achieve gauge. Alternatively, rework pattern with your own gauge measurements.

Summary

Body & sleeves: Cast on with long-tail cast-on method. Work in k1p1 ribbing, then continue in pattern stitch A followed by stockinette stitch.

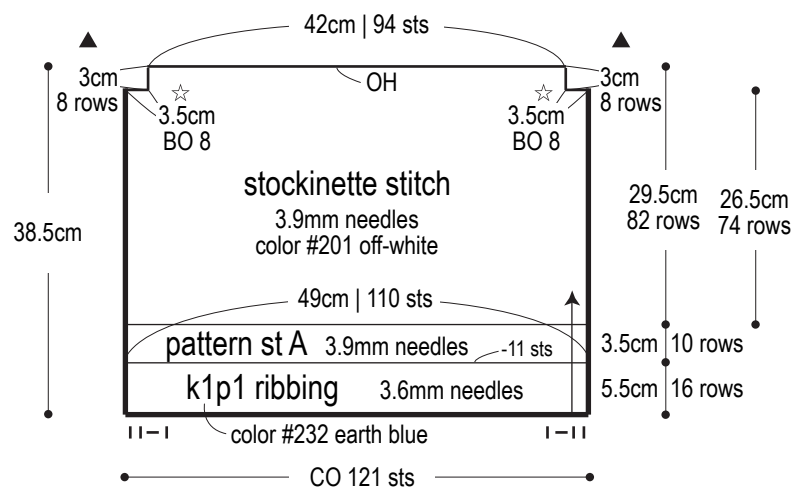
Yoke: Pick up live stitches from body and sleeves. Work pattern stitch B in the round, working evenly spaced decreases as indicated in chart. Continue in k1p1 ribbing. Bind off in pattern.

Finishing: Align body sections marked with ☆ and seam with Kitchener stitch. Align back ▲ section with sleeve ▲ section and seam with stitches-to-rows mattress stitch. Seam sides and sleeve undersides with mattress stitch.

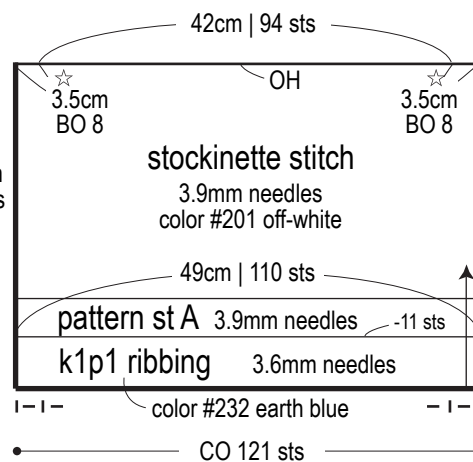
Abbreviations:

BO = bind off CO = cast on OH = on hold (place on stitch holder) PU = pick up RE = row(s) even #-#-# = rows-stitches-times

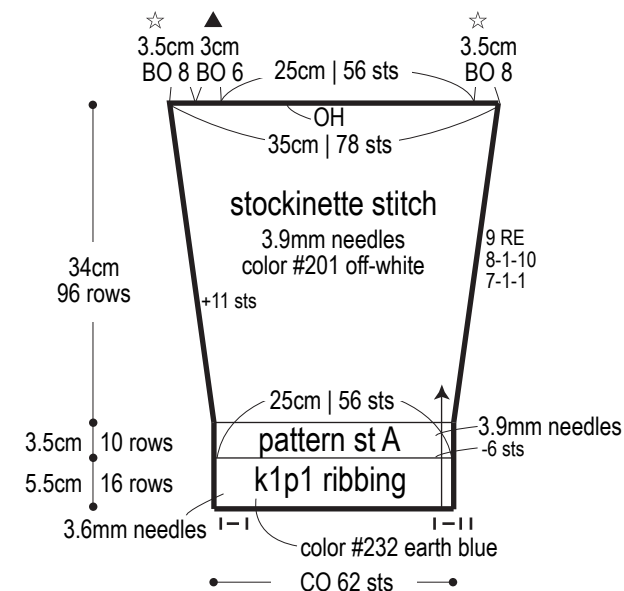
Back



Front



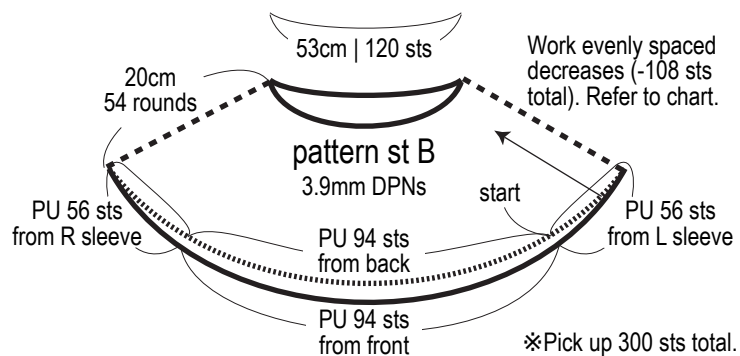
Right sleeve



※Reverse shaping for left sleeve.
(▲ will be on the right edge.)

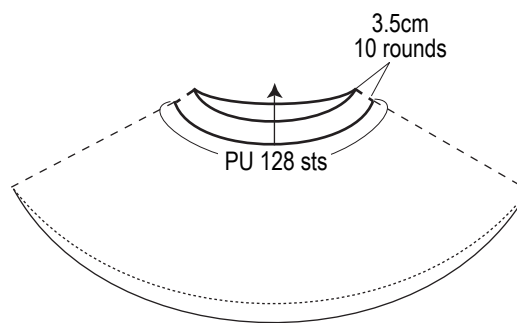
※Seam ☆ and ☆ on body and sleeve together with Kitchener stitch. Seam ★ and ★ together with stitches-to-rows mattress stitch.

Yoke



Collar: k1p1 ribbing

3.6mm DPNs, color #232 earth blue



Use this QR code on a smartphone to view a video about how to work the stitches-to-rows seams (when seaming bound-off stitches).

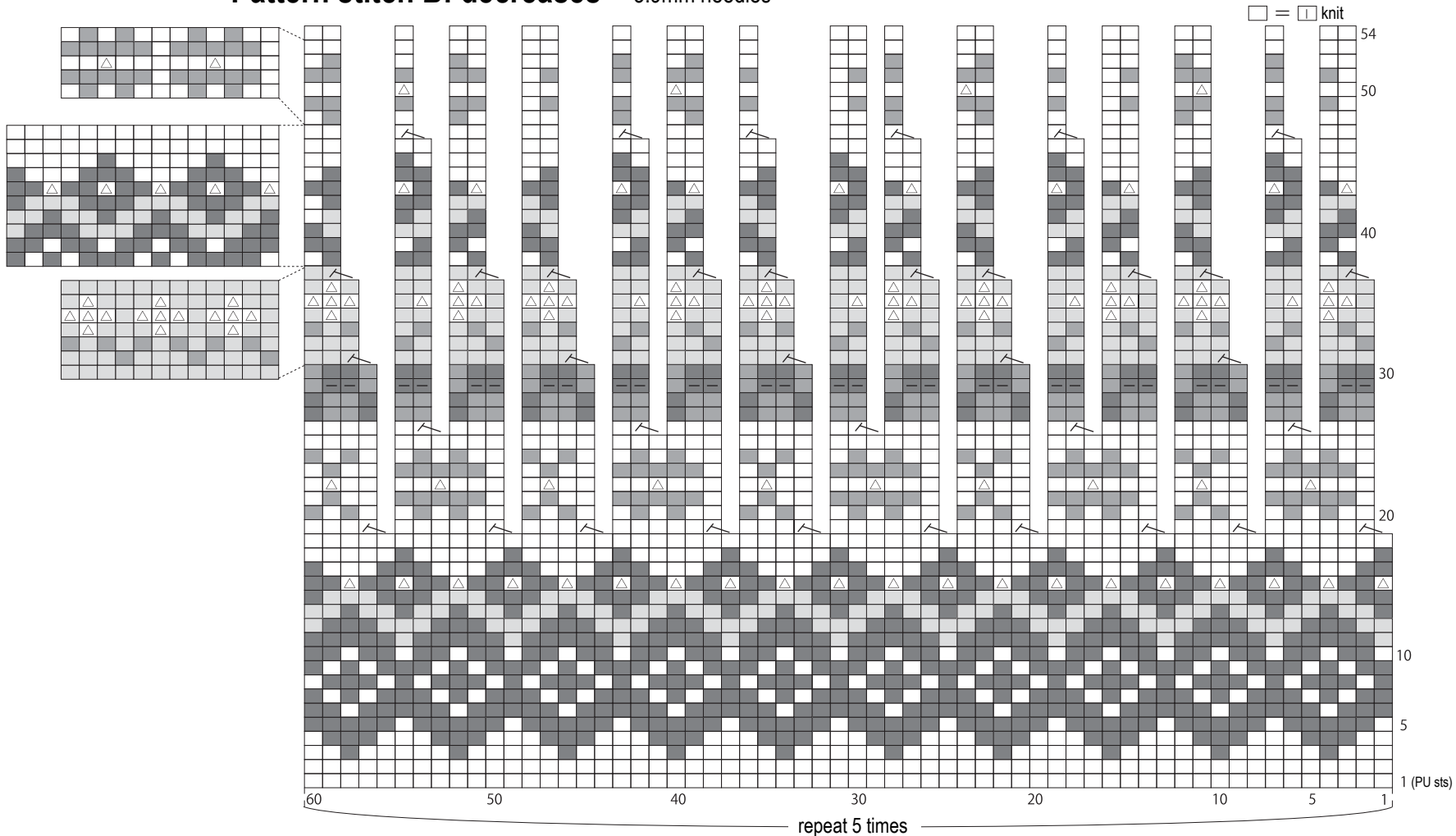


※To view on computer, search on the Pierrot Yarns website or YouTube channel instead.

検索

Pattern stitch B: decreases

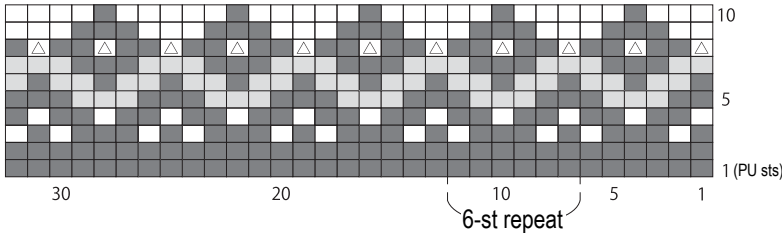
3.9mm needles



Pattern stitch A

3.9mm needles

□ = □ knit



- = color #232 earth blue
- = color #225 Nile green
- = color #222 pink
- △ = color #231 cyber pink
- = color #201 off-white