

# 23-44 Tawashi



## Suggested yarn:

- Pierrot Yarns Meine Rollen Acrylic Gokubuto [100% acrylic; 61 yds/56m per 1.59 oz./45g skein]; -- *discontinued; suggested substitute below*
  - version A:
    - color #1 white, 1 skein [15g]
    - color #10 light blue, 1 skein [15g]
  - version B:
    - color #4 pink, 1 skein [15g]
    - color #11 red, 1 skein [15g]
- *suggested substitute*: Pierrot Yarns Zakka Acrylic Namibuto [100% acrylic; 77 yds/70m per 0.88 oz./25g skein];
  - color A, 1 skein [15g]
  - color B, 1 skein [15g]

## Tools/Notions:

- 5.0mm (US H) crochet hook or size necessary to achieve gauge

## Finished measurements:

- diameter 13cm/5/12"

## Gauge (10cm/4" square):

- No gauge information is provided in the original pattern. Use a hook size necessary to achieve desired stiffness of fabric.

*Gauge may vary according to individual crochet style. Change hook size if necessary to achieve gauge. Alternatively, rework pattern with your own gauge measurements.*

## Summary

✳️**Note:** Like all Japanese patterns, stitch counts given here for foundation chains do **not** include any chain sts needed for turning post.

Work according to chart, increasing and decreasing on same rows. Alternate as follows: row A decrease > increase, then row B increase > decrease.

With wrong sides facing each other, seam foundation chain to bind-off edge using whipstitch. At each edge, thread yarn through each stitch at edge, then cinch shut tightly and bind off.

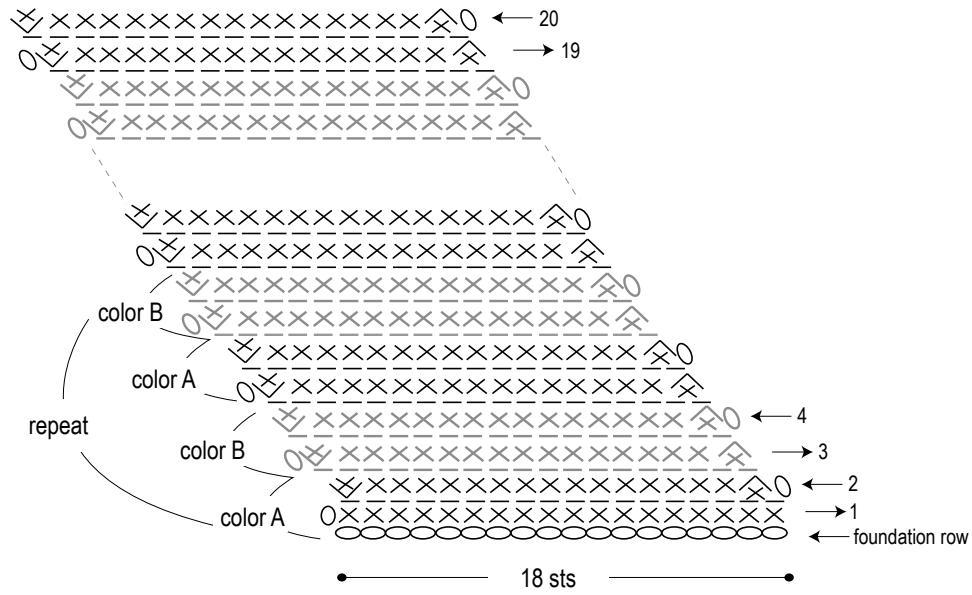
## Abbreviations:

ch = chain

sc = single crochet (US)

sc tbl = single crochet through back loop only (US)

# Chart



- = chain stitch
- × = sc (US)
- ⊗ = sc tbl (US)

# Finishing

