

22-22 Soft Mohair Shawl



Suggested yarn:

- Pierrot Yarns Soft Mohair [65% acrylic, 30% mohair, 5% nylon (polyamide); 219 yds/200m per 1.06oz/30g skein]; color #931 white, 6 skeins [180g]

Tools/Notions:

- 4.5mm (US 7) knitting needle or size necessary to achieve gauge

Finished measurements:

- width 48cm/18.90"
- length 138cm/54.33"

Gauge (10cm/4" square):

- pattern stitch: 17 sts and 26 rows

Gauge may vary according to individual knitting style. Change needle size if necessary to achieve gauge. Alternatively, rework pattern with your own gauge measurements.

Summary

✳️**Note:** entire shawl worked with 2 strands of yarn held together.

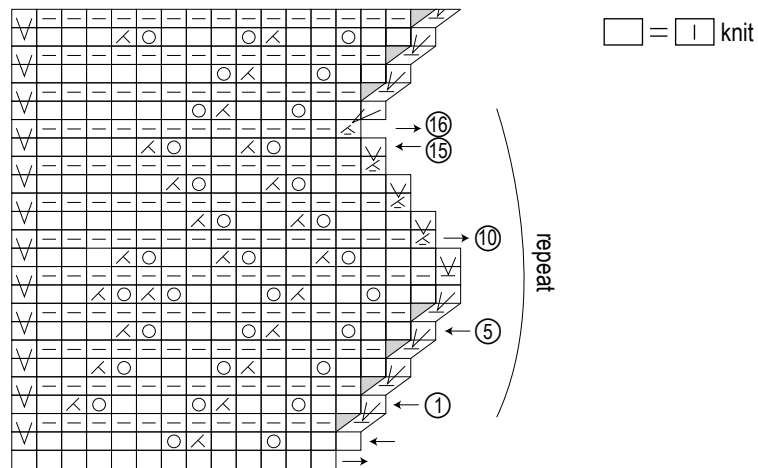
Starting with lower left corner, cast on using crochet chain provisional cast-on method. Work 98 rows of edging A, then put stitches on stitch holder. Next, remove provisional cast-on edge from edging A piece, picking up the live stitches as you remove the cast-on. Now work body of shawl in pattern stitch, picking up 51 sts from ends of rows in edging A piece. Starting from the next row, work edging A', pattern stitch, and edging B' on each row. Continue for 309 rows. Bind off edging sections and pattern stitch section. After edging B' section is complete, work edging B for 98 rows. When finished with edging B section, seam last row of stitches to bound-off stitches of edging A' section using Kitchener stitch. Then seam the straight edge of edging B section to body of shawl using stitches-to-rows mattress stitch.

Abbreviations:

CO = cast on
k = knit stitch

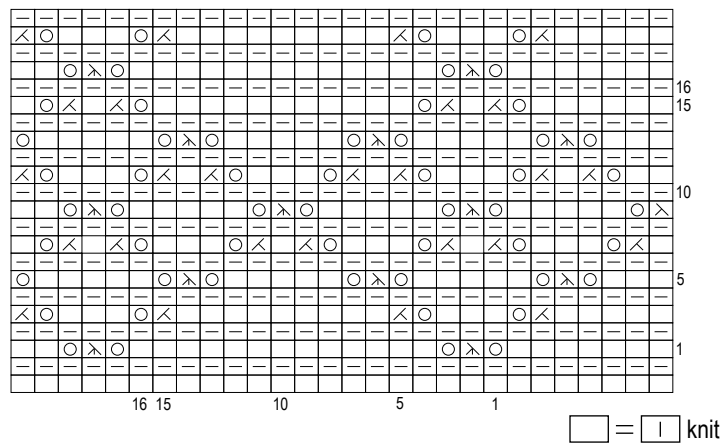
Edging A and A'

(reverse shaping for edging B and B')



※Note: for edging A', do not work the slip stitches in this section.

Pattern stitch C



Shawl schematic

