

214ss-04 Sora Motif Sweater



Suggested yarn:

- Pierrot Yarns Sora [50% cotton, 50% nylon; 73 yds/67m per 1.41 oz./40g skein]; color #04 hana, 12 skeins [480g]

Tools/Notions:

- 3.0mm (approx. US C or D) crochet hook or size necessary to achieve gauge

Finished measurements:

- One size fits most (see schematics).

Gauge:

- Each motif should measure 9.5cm/3.74" square.

Gauge may vary according to individual crochet style. Change hook size if necessary to achieve gauge. Alternatively, rework pattern with your own gauge measurements.

Crochet Tips

Body: Work magic ring to begin. Crochet motifs according to chart. Starting from second motif, join motifs together on the final round, but leave unseamed areas at cuff, neckline, and armhole openings.

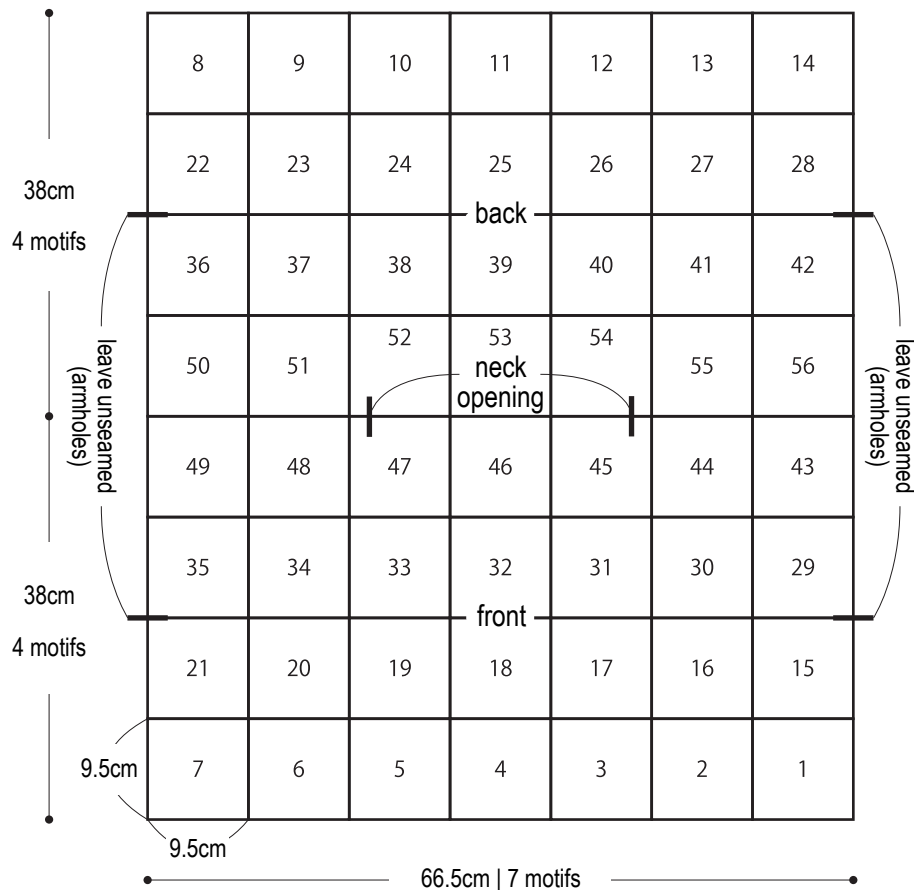
Finishing: Work edging A in the round at hem. Working edging B in the round at cuffs and neckline.

Abbreviations:

m = magic ring

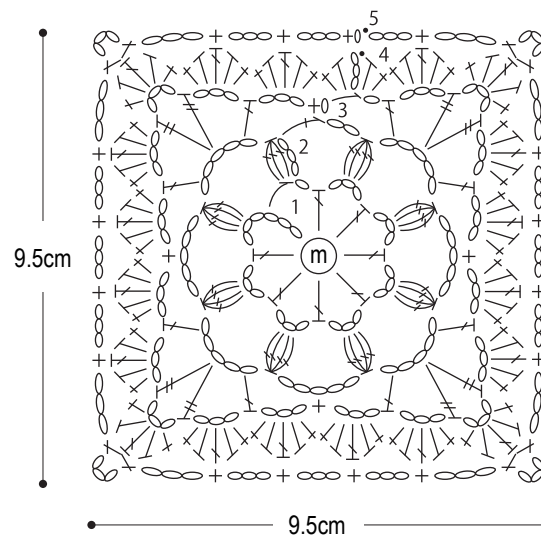
Body schematic

3.0mm hook



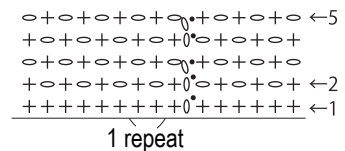
Motif

3.0mm hook



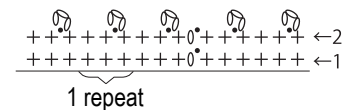
Edging A

3.0mm hook



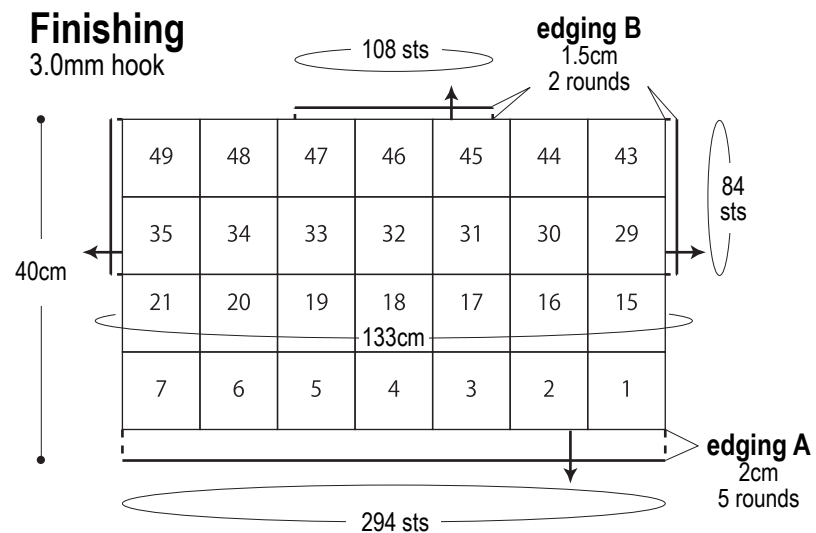
Edging B

3.0mm hook



Finishing

3.0mm hook



Motif joining method & hem/neckline edging (3.0mm hook)

