

211s-3 Silk Garden Hair Ribbon



Suggested yarn:

- Pierrot Yarns Silk Garden [100% silk; 208 yds/190m per 1.41 oz./40g skein];
 - color #04 beige, 1 skein [5g]
 - color #07 rose pink, 1 skein [10g]

Tools/Notions:

- 2.3mm (approx. US B) crochet hook or size necessary to achieve gauge
- safety pin or hair pin

Finished measurements:

- Please see schematics.

Gauge (10cm/4" square):

- pattern stitches A and A': 30 sts and 13 rows
- pattern stitch B: 30 sts and 26 rows

Gauge may vary according to individual crochet style. Change hook size if necessary to achieve gauge. Alternatively, rework pattern with your own gauge measurements.

Crochet Tips

Parts A & B: Work foundation chain to begin part A. Work pattern stitch A in the round. Continue to edging A, then work edging A around foundation chain edge as well. Work part B in pattern stitch A' and edging A' working back-and-forth in joined rounds.

Part C: Work part C in pattern stitch B and edging A' working back-and-forth in joined rounds.

Finishing: Referring to charts 1 and 2, assemble ribbon parts. Fasten safety pin or hair pin to back of ribbon.

Abbreviations:

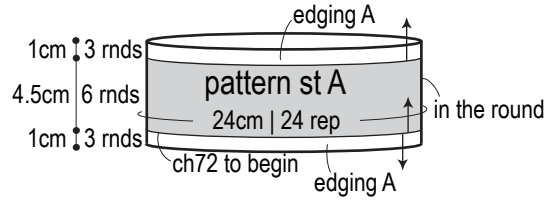
ch = chain

rep = pattern repeat(s)

WS = wrong side

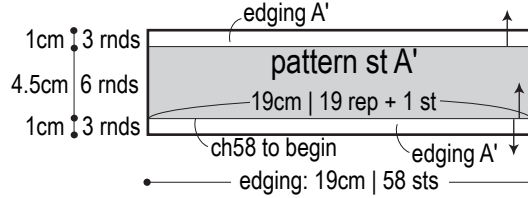
Part A schematic

2.3mm hook



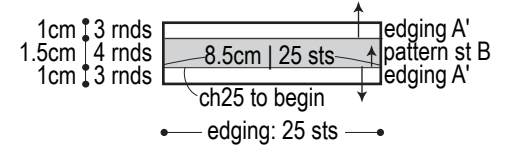
Part B schematic

2.3mm hook



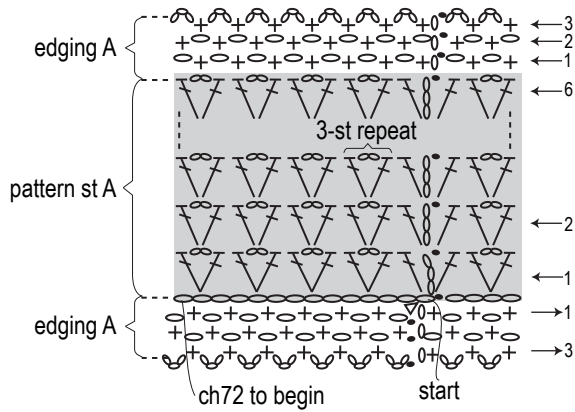
Part C schematic

2.3mm hook



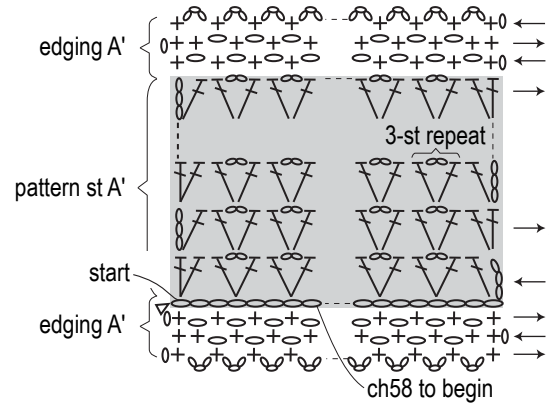
Part A chart

2.3mm hook



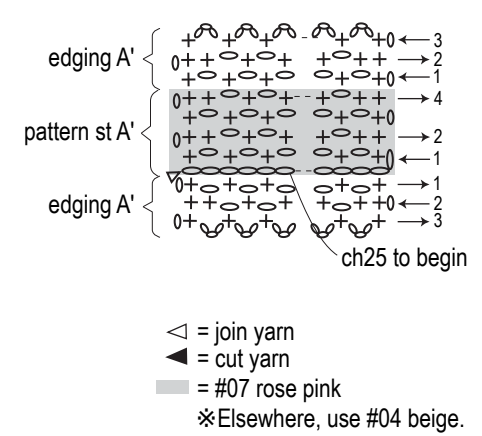
Part B chart

2.3mm hook

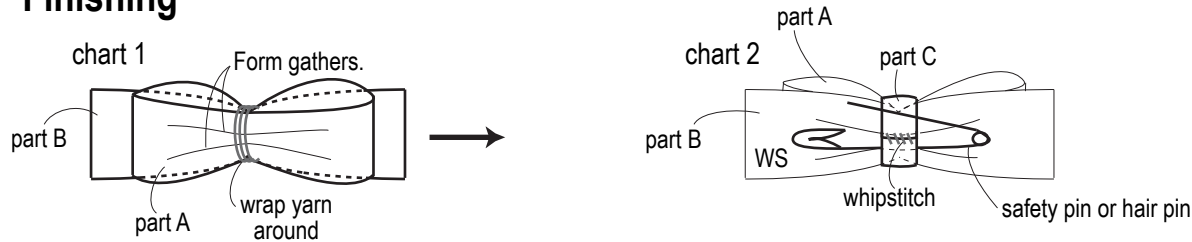


Part C chart

2.3mm hook



Finishing



*Place part B on top of part A. Form gathers in part A, then wrap center with yarn.

*Place part C on top of wrapped area. Fasten pin to WS of part B with whipstitch.

Finished item

