

211-16h 3-way Convertible Shrug Shawl



Suggested yarn:

- Pierrot Yarns Tsubaki Cotton [100% cotton treated with camellia oil; 90 yds/82m per 1.41 oz./40g skein]; color #01 white, 8 skeins [320g]

Tools/Notions:

- 3.0mm (approx. US C or D) crochet hook or size necessary to achieve gauge
- 6 buttons (20mm/0.79")

Finished measurements:

- width 51cm/20.08"
- length 121cm/47.64"

Gauge (10cm/4" square):

- pattern stitch: 23.5 sts and 10 rows

Gauge may vary according to individual crochet style. Change hook size if necessary to achieve gauge. Alternatively, rework pattern with your own gauge measurements.

Crochet Tips

Body: Work foundation chain to begin. Work in pattern stitch. Work edging in the round around entire perimeter of shawl.

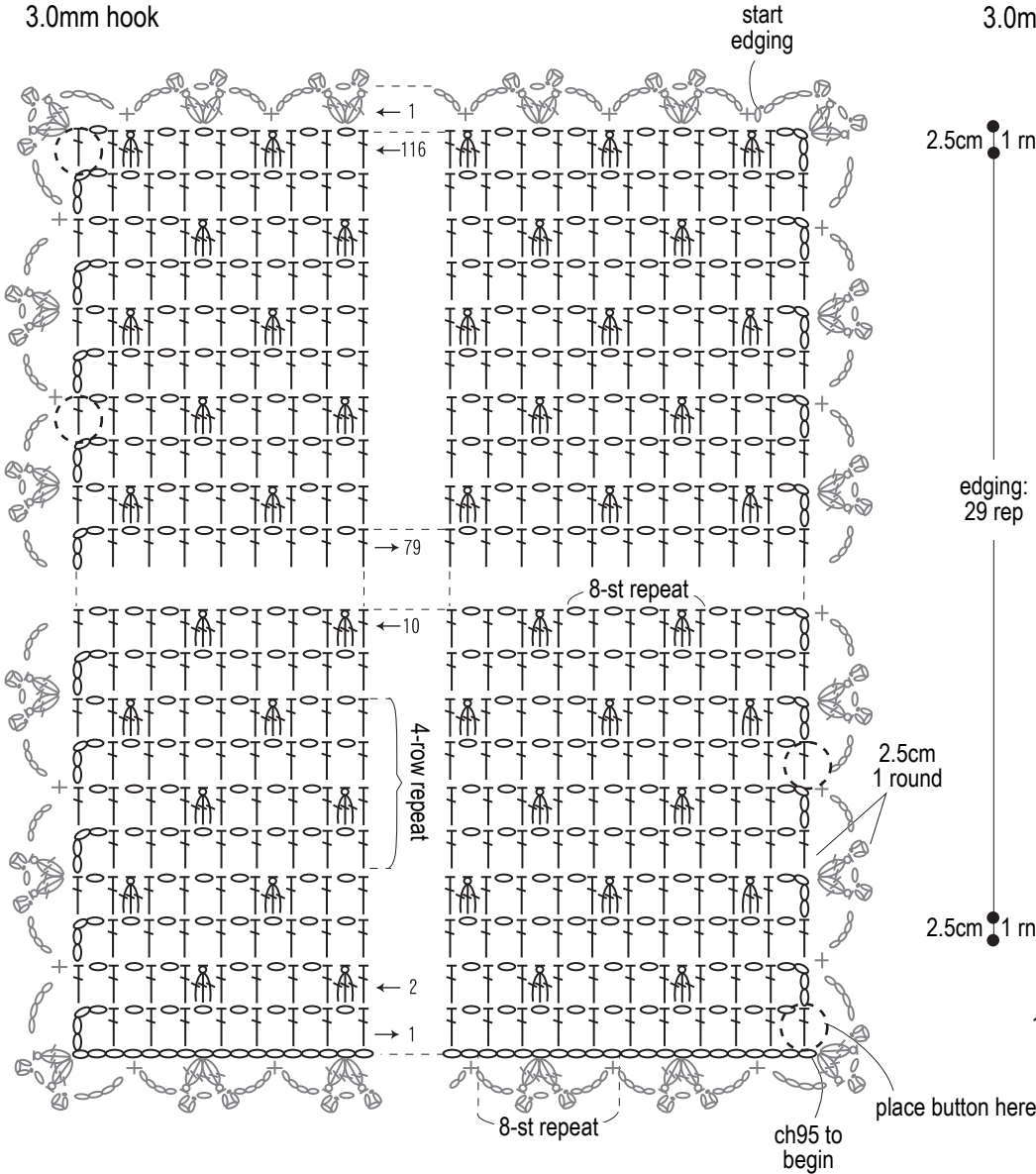
Finishing: Sew buttons to shawl where indicated. Use eyelets in fabric as buttonholes.

Abbreviations:

ch = chain
dc = double crochet (US)
rep = pattern repeat(s)

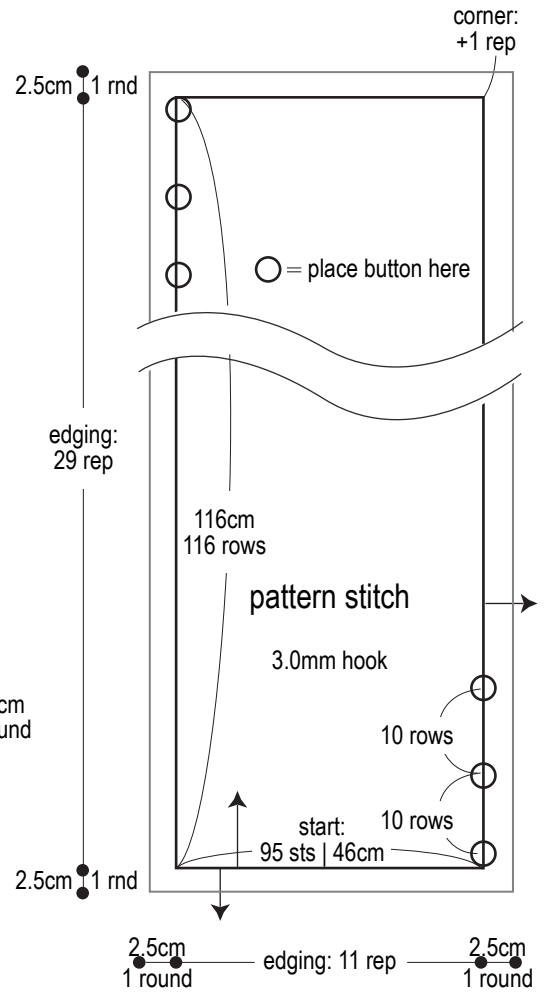
Pattern stitch

3.0mm hook



Schematic & edging

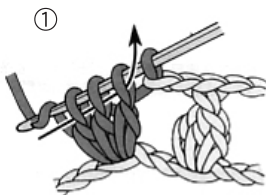
3.0mm hook



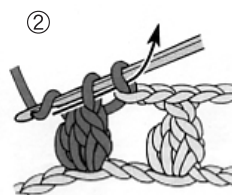
dc bobble stitch

= worked into st

= worked around st(s)



Inserting hook into same st each time, work 3 incomplete dc sts. Pull up a loop & draw yarn through 3 loops already on hook as shown.



Pull up another loop, then pull yarn through both loops already on hook.



Completed dc bobble stitch.