

# 213s-04 Cyrup Shawl



## Suggested yarn:

- Pierrot Yarns Cyrup [52% acrylic, 29% nylon, 13% plant fiber, 6% polyester; 492 yds/450m per 1.76 oz./50g cone]; color #13 peach sorbet, 6 cones [260g]

## Tools/Notions:

- 3.0mm (approx. US C or D) crochet hook or size necessary to achieve gauge

## Finished measurements:

- width 52cm/20.47"
- length 144cm/56.69"

## Gauge (10cm/4" square):

- pattern stitch A: 21.5 sts and 7 rows
- pattern stitch B: 19 sts and 11 rows

*Gauge may vary according to individual crochet style. Change hook size if necessary to achieve gauge. Alternatively, rework pattern with your own gauge measurements.*

## Crochet Tips

✿**Note:** entire shawl worked with 2 strands of yarn held together.

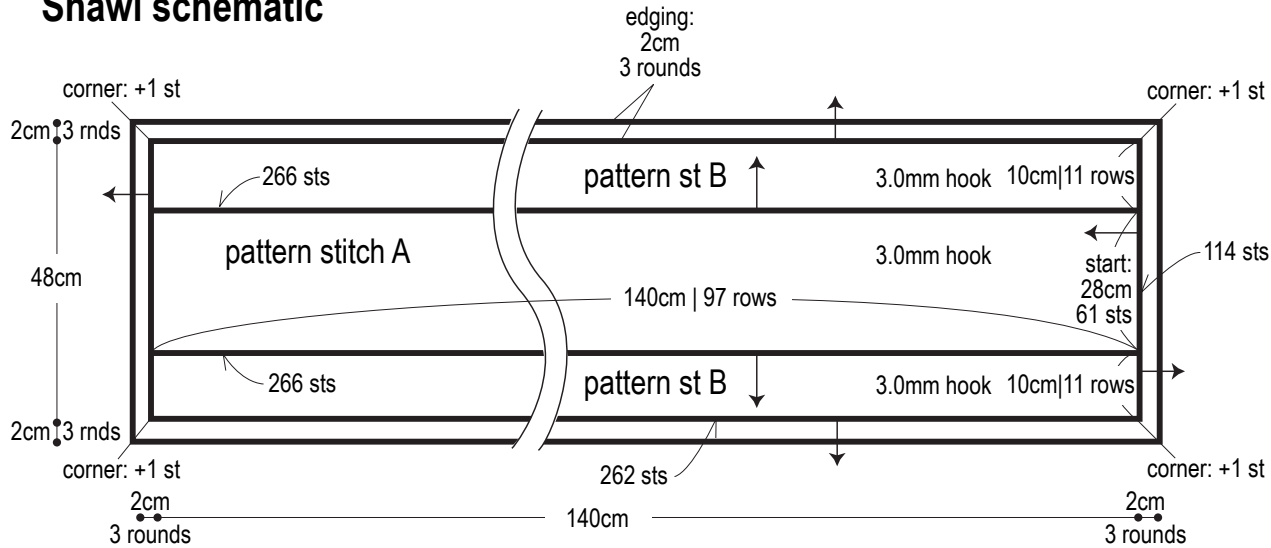
**Body of shawl:** ch61 to begin. Work 97 rows in pattern stitch A. Working into edges of pattern stitch A panel, work 266 sts in pattern stitch B for 11 rows.

**Finishing:** Work edging in the round around entire outer edge of shawl.

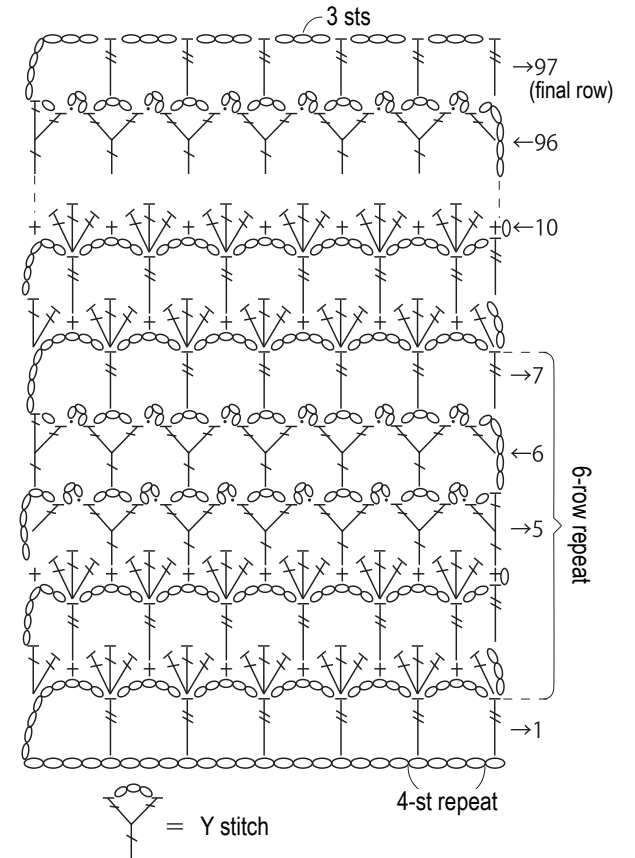
## Abbreviations:

ch = chain

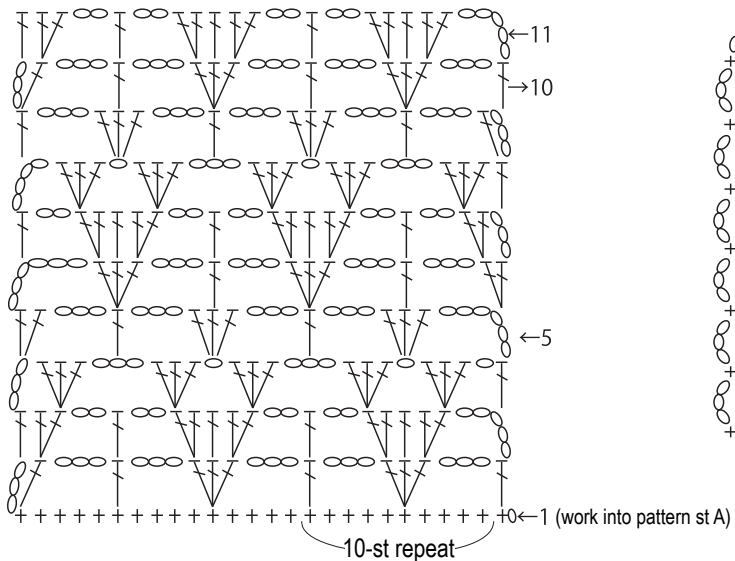
# Shawl schematic



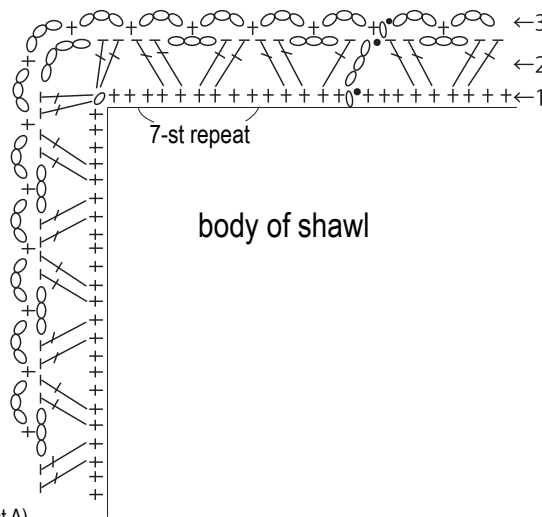
## Pattern stitch A (3.0mm hook)



## Pattern stitch B (3.0mm hook)



## Edging (3.0mm hook)



body of shawl

Use this QR code on your smartphone to view a video about how to work Y stitch.



※To view on computer, search on the Pierrot Yarns website instead.

検索