

213ss-12 Beauty Silk Cotton Ruffle Dress



Suggested yarn:

- Pierrot Yarns Beauty Silk Cotton [90% cotton, 10% silk; 180 yds/165m per 1.06 oz./30g skein]; color #14 silver grey, 3 skeins [355g]

Tools/Notions:

- 2.5mm (approx. US B or C) crochet hook or size necessary to achieve gauge

Finished measurements:

- bust 88cm/34.65"
- cross back width 39cm/15.35"
- length 83cm/32.68"

Gauge (10cm/4" square):

- pattern stitch A: 30 sts and 14.5 rows
- pattern stitch B: 30 sts = 10cm/4" and 1 pattern repeat (13 rows) = 9.5cm/3.74"
- pattern stitch C: 30 sts and 16 rows

Gauge may vary according to individual crochet style. Change hook size if necessary to achieve gauge. Alternatively, rework pattern with your own gauge measurements.

Crochet Tips

Back & front body: Start by crocheting a foundation chain. Work in pattern stitches A', B, and A, decreasing where indicated, then continue in pattern stitch C.

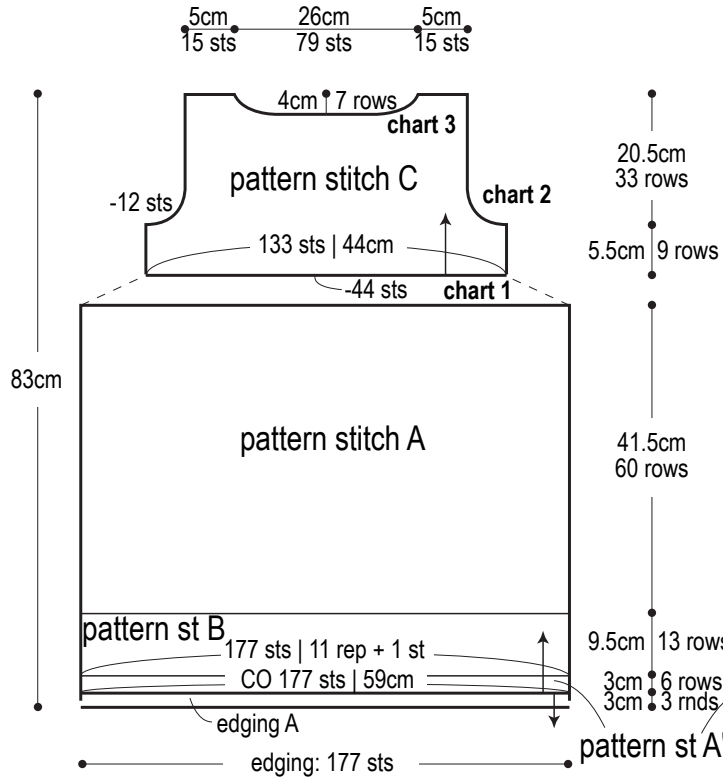
Finishing: Seam shoulders with woven seam. Seam sides with chain seam (alternating ch st and slip st as needed to maintain pattern). Work edging A in the round along hem. Work edging B in the round around each armhole. Work sc around neckline. Crochet ruffle piece, then place it on top of neckline. Seam ruffle to neckline with sc and ch sts, then work edging B around neckline.

※Pattern stitch C will be somewhat heavier than the lower body, so it may stretch.

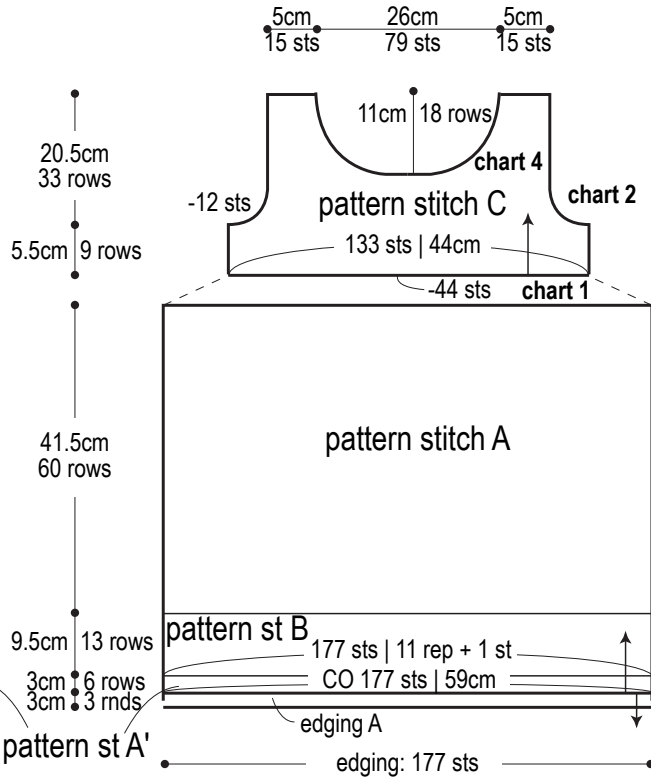
Abbreviations:

ch = chain dc = double crochet (US) hdc = half double crochet (US) rep = pattern repeat(s) rnd(s) = round(s) sc = single crochet (US)

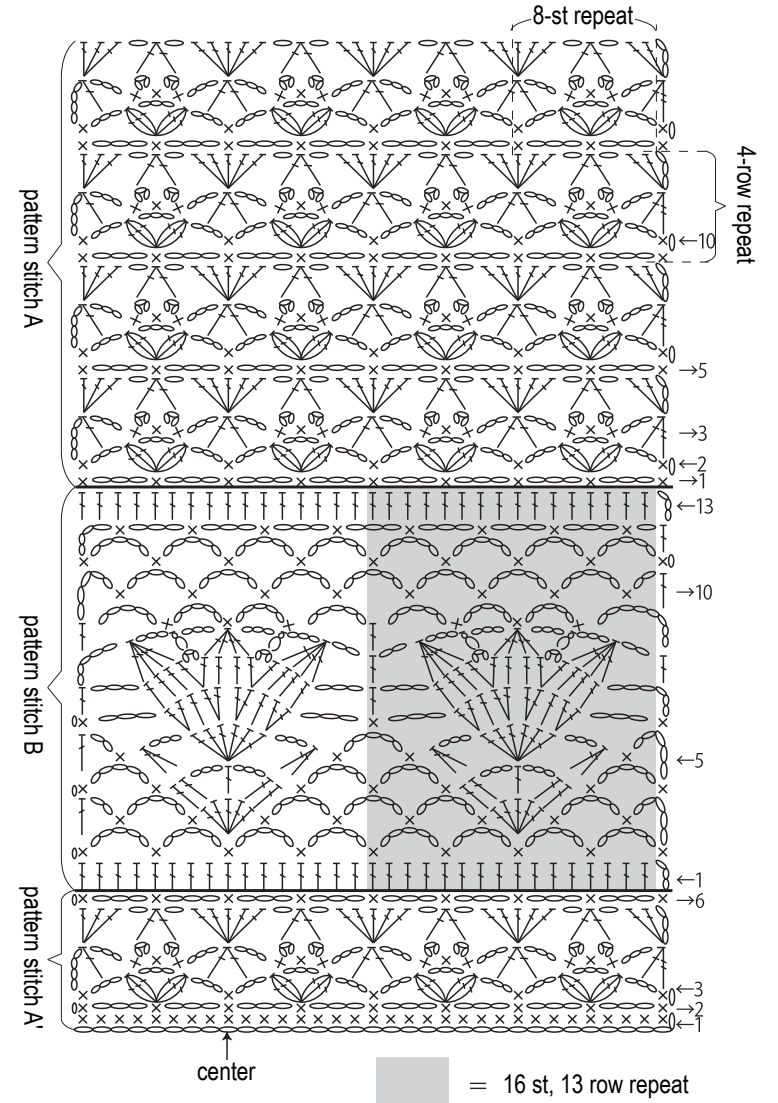
Back (2.5mm hook)



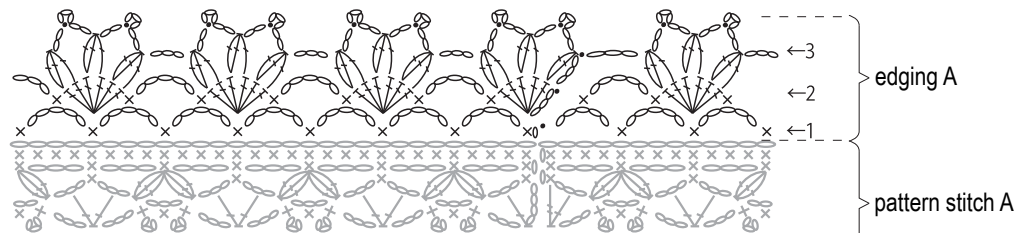
Front (2.5mm hook)



Pattern stitch A, A', B (2.5mm hook)

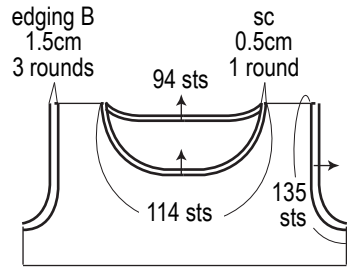


Edging A (2.5mm hook)



Neckline & armhole edging

2.5mm hook



Back neckline

2.5mm hook

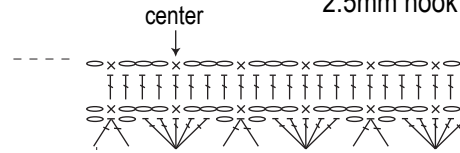
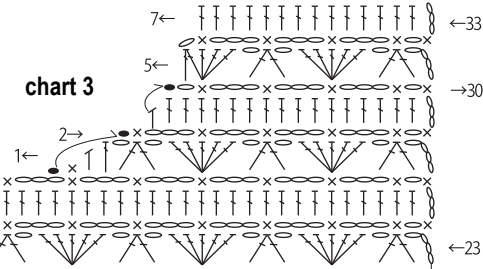
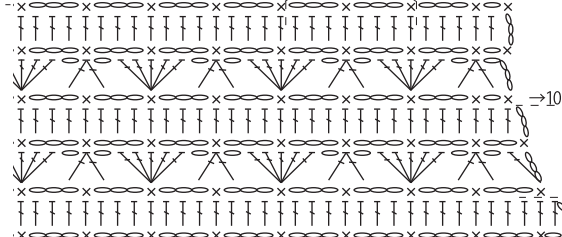


chart 3



pattern stitch C

8-st repeat



Front neckline

2.5mm hook

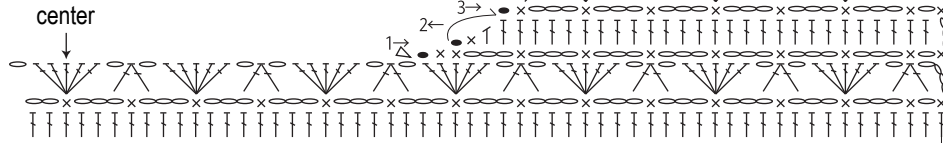


chart 4

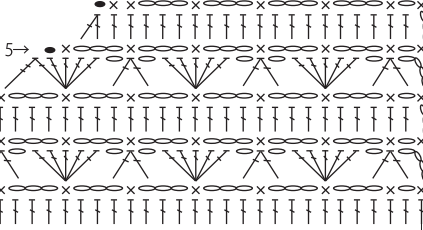


chart 2

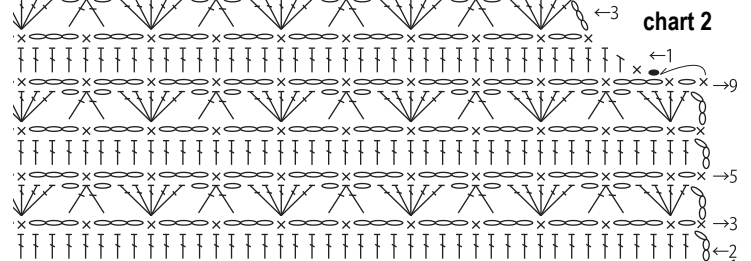
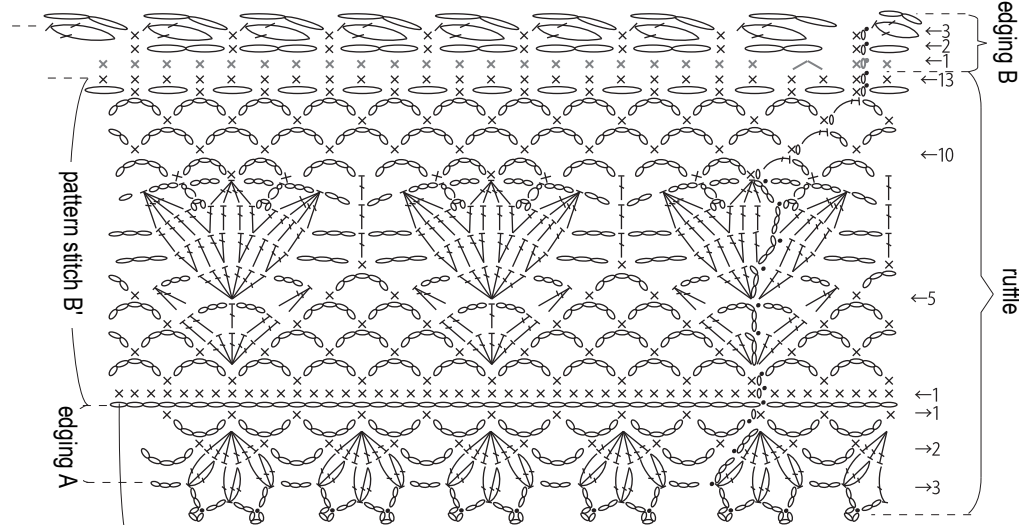


chart 1'



Ruffle & edging A, B (2.5mm hook)

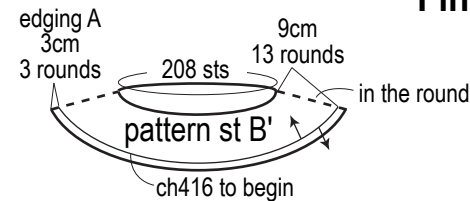


Edging B (2.5mm hook)

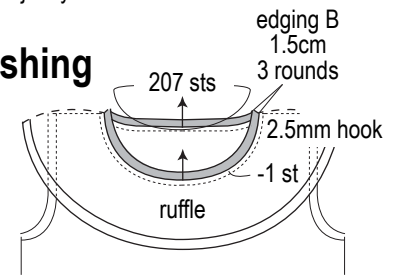


- = 3-dc cluster stitch
- = 2-dc cluster stitch
- = hdc puff stitch
- = join yarn

Ruffle (2.5mm hook)



Finishing



*Work first round of sc of edging B through two layers: overlap sc of neckline with 13th round of ruffle.