

amicomo8-8 Pompom Tawashi



Suggested yarn:

- Pierrot Yarns Yuttari Acrylic [100% antibacterial deodorant acrylic; 73 yds/67m per 1.41 oz./40g skein];
 - color #83 smoke pink, 1 skein [10g]
 - color #86 spring green, 1 skein [10g]

Tools/Notions:

- 3.5mm (US E) crochet hook or size necessary to achieve gauge
- 1 cooking chopstick, 30cm/11.81" long
- kitchen sponge or scraps of acrylic yarn

Finished measurements:

- Please refer to schematics.

Gauge (10cm/4" square):

- No gauge information is provided in the original pattern. Choose a hook size necessary to achieve dense fabric such that stuffing (sponge or yarn) will not show through.

Gauge may vary according to individual crochet style. Change hook size if necessary to achieve gauge. Alternatively, rework pattern with your own gauge measurements.

Crochet Tips

✳️**Note:** crochet entire tawashi with 2 strands of yarn held together.

Pompom: Create magic ring, then crochet pompom by working sc in the round according to chart. On round 9, change yarn color and insert sponge (or yarn scraps). On last round, thread yarn through remaining stitches and cinch shut.

Finishing: Fasten chopstick to pompom following directions in order from ① to ④.

Abbreviations:

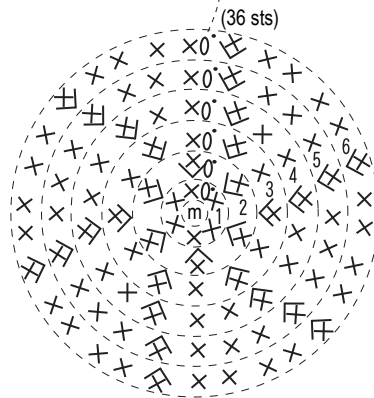
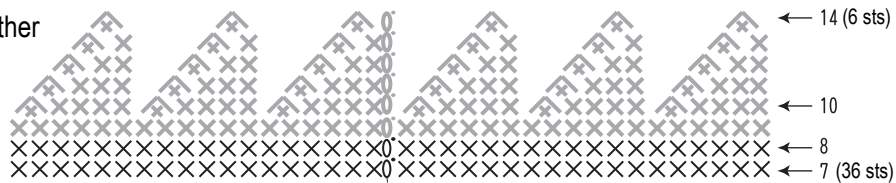
m = magic ring

sc = single crochet (US)

Pompom

3.5mm hook

2 strands of yarn held together

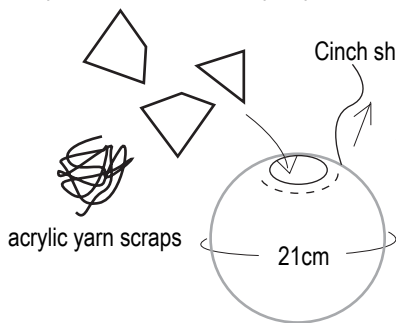


round no. | stitch count

round no.	stitch count	
14	6	-6 sts
13	12	
12	18	
11	24	
10	30	work even
9	36	
8	36	
7	36	+6 sts
6	36	
5	30	
4	24	
3	18	
2	12	
1	6 (sc into magic ring)	

— = #83 smoke pink
 — = #86 spring green

Cut kitchen sponge into small pieces, then insert into pompom.



After working last round, leave tail approx. 30cm long. Thread through remaining stitches and cinch shut.

How to attach chopstick

