

amicomo11-2 Long Cowl with Tab



Suggested yarn:

- Malabrigo Yarn Lace [100% merino wool; 470 yds/430m per 1.76 oz./50g hank]; color #9 polar morn, 4 hanks [200g]

Tools/Notions:

- 3.9mm (approx. US 6) knitting needles or size necessary to achieve gauge
- 2 buttons (21mm/0.83")

Finished measurements:

- width 35cm/13.78"
- length 165cm/64.96"

Gauge (10cm/4" square) after lightly blocking with steam:

- pattern stitch: 27.5 sts and 32 rows
- k1p1 ribbing: 28.5 sts and 32 rows

Gauge may vary according to individual knitting style. Change needle size if necessary to achieve gauge. Alternatively, rework pattern with your own gauge measurements.

Knitting Tips

※Note: Entire item worked with 2 strands of yarn held together.

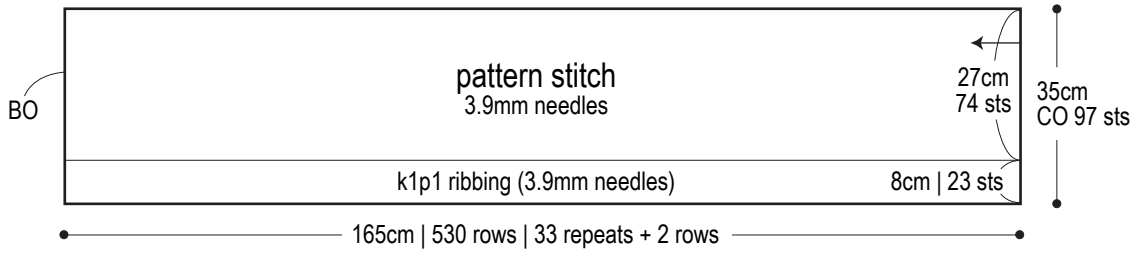
Cowl: Cast on with long-tail cast-on method. Work in pattern stitch and k1p1 ribbing (except that at each edge, k3 instead of k1). Bind off in pattern. Seam cast-on edge to bind-off edge with woven seam.

Tab: Cast on with long-tail cast-on method. Knit according to chart. Bind off in pattern. Sew button.

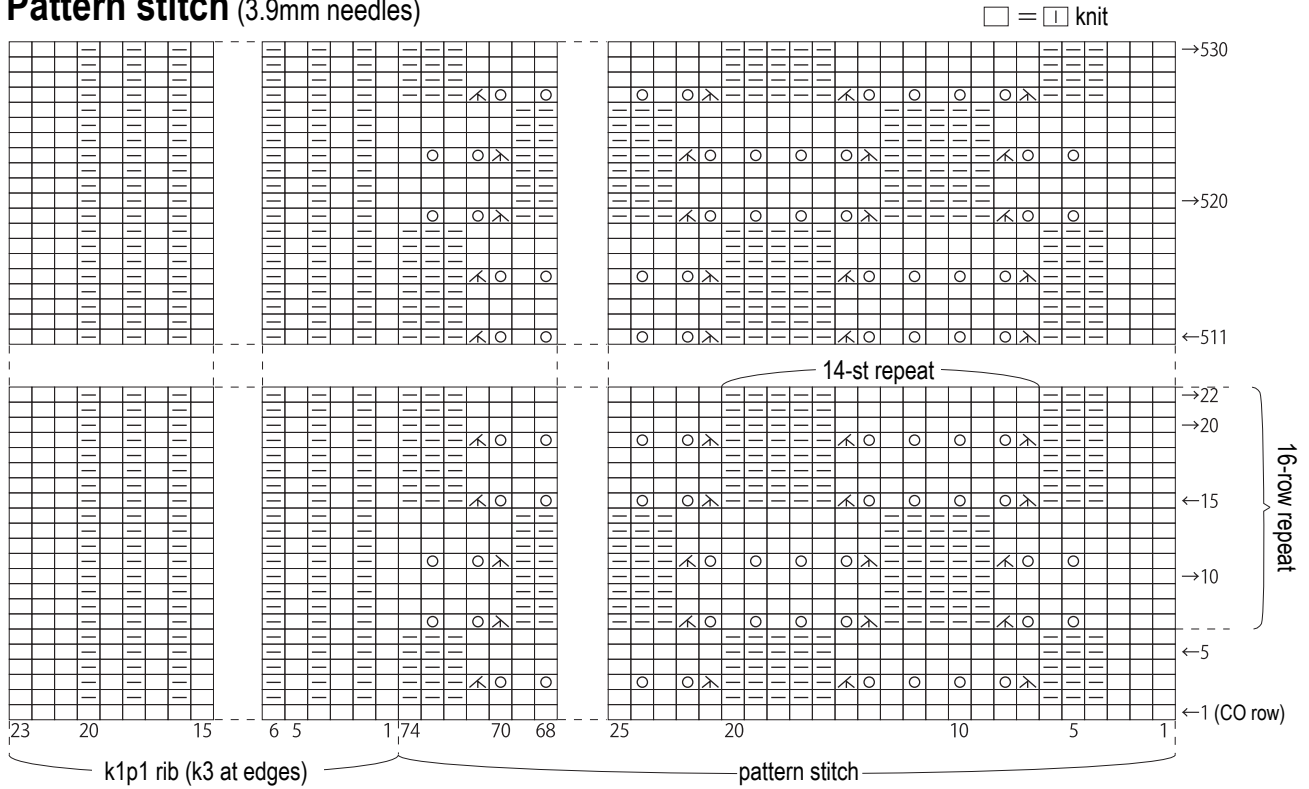
Abbreviations:

BO = bind off
CO = cast on
k = knit stitch
p = purl stitch
ssk = slip, slip, knit
YO = yarn over

Cowl



Pattern stitch (3.9mm needles)



□ = YO

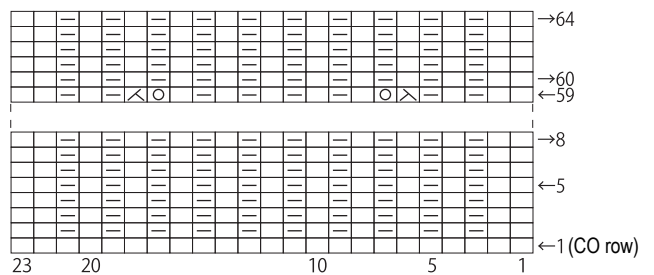
⊗ = ssk

⊗ = k3tog

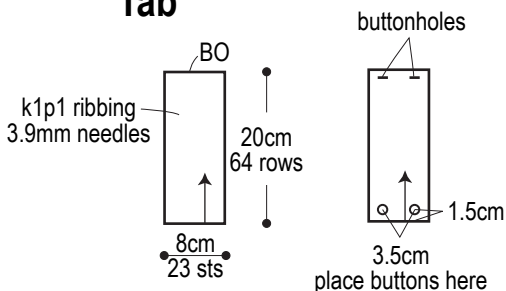
⊗ = double decrease

(Slip 1 st knitwise, then knit next 2 sts together. Pass slipped stitch over the k2tog just completed.)

Tab pattern stitch (3.9mm needles)



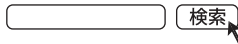
Tab



Use this QR code on your smartphone to view a video about how to work the double decrease.



*To view on computer, search on the Pierrot Yarns website instead.



Use this QR code on your smartphone to view a video about how to work k3tog.



*To view on computer, search on the Pierrot Yarns website instead.

