

# 212w-15 Fleur Pompom Scarf



## Suggested yarn:

- Pierrot Yarns Fleur [67% acrylic, 24% wool, 9% nylon; 74 yds/68m per 1.76 oz./50g skein];
  - version A: color #01 pink/beige/brown gradation, 3 skeins [135g]
  - version B: color #03 yellow gradation, 3 skeins [135g]
  - version C: color #05 green/orange gradation, 3 skeins [135g]

## Tools/Notions:

- 6.6mm (approx. US 10½) knitting needles or size necessary to achieve gauge

## Finished measurements:

- width 11cm/4.33"
- length 106cm/41.73"

## Gauge (10cm/4" square):

- k1p1 ribbing: 17 sts and 20 rows

*Gauge may vary according to individual knitting style. Change needle size if necessary to achieve gauge. Alternatively, rework pattern with your own gauge measurements.*

## Knitting Tips

**Scarf:** Cast on with crochet provisional cast-on method. Work in k1p1 ribbing. When finished, thread yarn through all remaining stitches and cinch together. Also thread the yarn tail left at the cast-on edge through the cast-on stitches and cinch together. Make pom-poms and attach one to each end.

## Abbreviations:

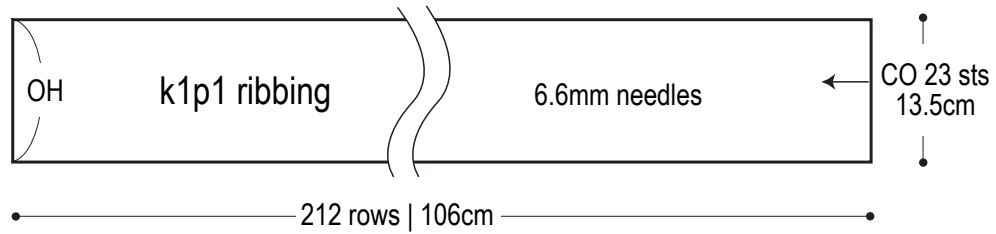
CO = cast on

k = knit

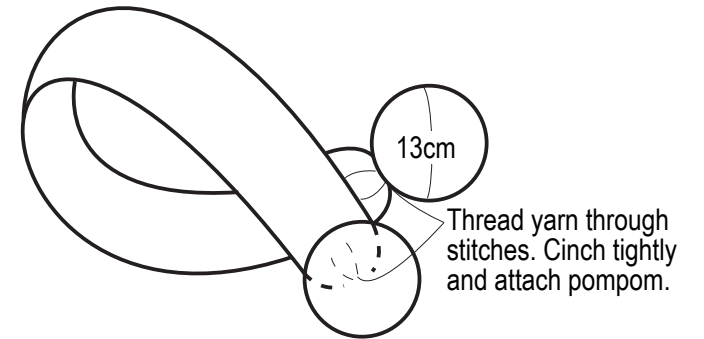
OH = on hold (i.e., place on stitch holder)

p = purl

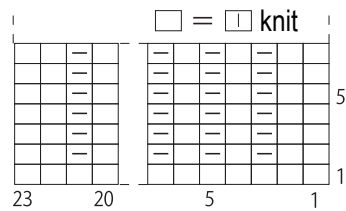
## Scarf



## Finishing



## k1p1 ribbing (6.6mm needles)



## How to make pompoms

