

212fw-33 Kids' Sourire Cowl



Suggested yarn:

- Pierrot Yarns Sourire [87% wool, 13% nylon; 77 yds/70m per 1.41 oz./40g skein]; color #44 red-beige, 3 skeins [95g]

Tools/Notions:

- 5.1mm (approx. US 8) knitting needles or size necessary to achieve gauge
- cable needle

Finished measurements:

- width 15cm/5.91"
- length 107cm/42.13"

Gauge (10cm/4" square):

- pattern stitch: 17 sts and 21 rows

Gauge may vary according to individual knitting style. Change needle size if necessary to achieve gauge. Alternatively, rework pattern with your own gauge measurements.

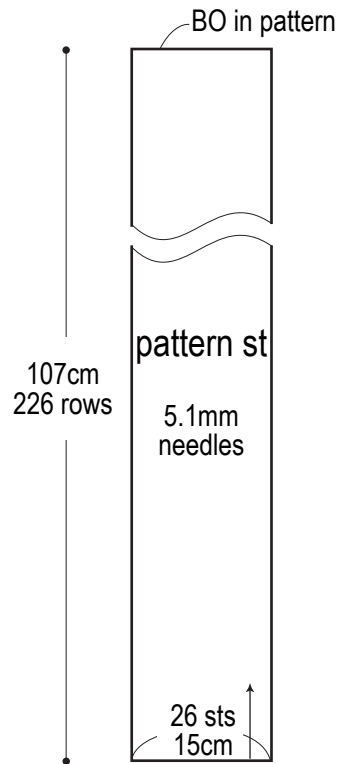
Knitting Tips

Cowl: Cast on with long-tail cast-on method. Work in pattern stitch. Bind off in pattern. With wrong sides facing, seam cast-on edge to bind-off edge with whipstitch.

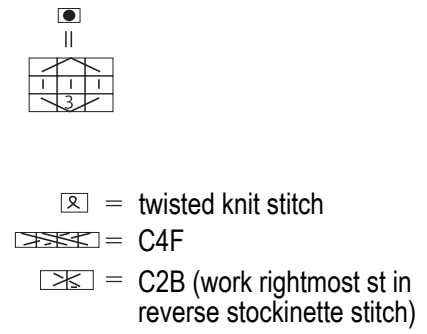
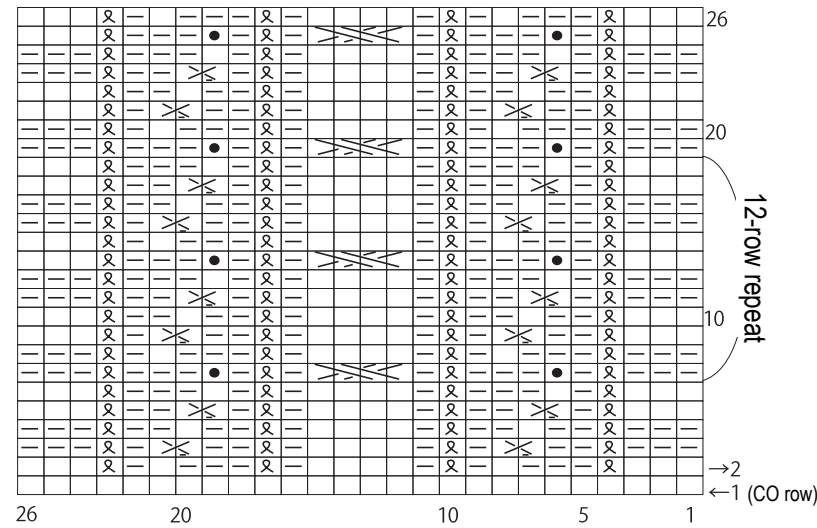
Abbreviations:

BO = bind off
CO = cast on
k = knit
p = purl

Cowl



Pattern stitch (5.1mm needles)



Finishing

