

212fw-26 Sharon Cat Bath Mitt



Suggested yarn:

- Pierrot Yarns Zakka Acrylic Namibuto [100% antibacterial deodorant acrylic; 77 yds/70m per 0.88 oz./25g skein];
 - color #22 black 3 skeins [60g]
 - color #17 vanilla beige, 2 skeins [40g]
 - color #1 white, 1 skein [5g]
 - color #6 red, 1 skein [5g]
 - color #9 blue, 1 skein [5g]

Tools/Notions:

- 3.0mm (approx. US C or D) and 3.5mm (US E) crochet hook or sizes necessary to achieve gauge
- small amount polyfiber stuffing

Finished measurements:

- width 11cm/4.33"
- length 13cm/5.12"

Gauge (10cm/4" square):

- single crochet (US) and pattern stitch: 17 sts and 18 rows

Gauge may vary according to individual crochet style. Change hook size if necessary to achieve gauge. Alternatively, rework pattern with your own gauge measurements.

Crochet Tips

Body: Work chain to begin. Work palm of hand side in sc (US) and loop stitch. Work back of hand size in sc (US). Seam the two body pieces together with right sides facing using half backstitch.

Head, eyes, nose, ears, paws, and ribbon: Crochet each part according to charts. Seam eyes, nose, and ears to face. Stuff head with polyfiber stuffing. Seam head, paws, and ribbon to body.

Finishing: Fasten one end of loop to palm side, then fasten other end to back of hand side.

Abbreviations:

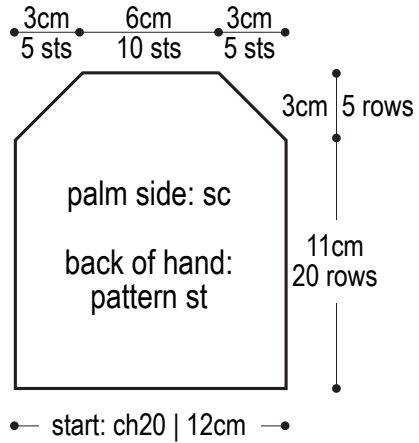
ch = chain

m = magic ring

sc = single crochet (US)

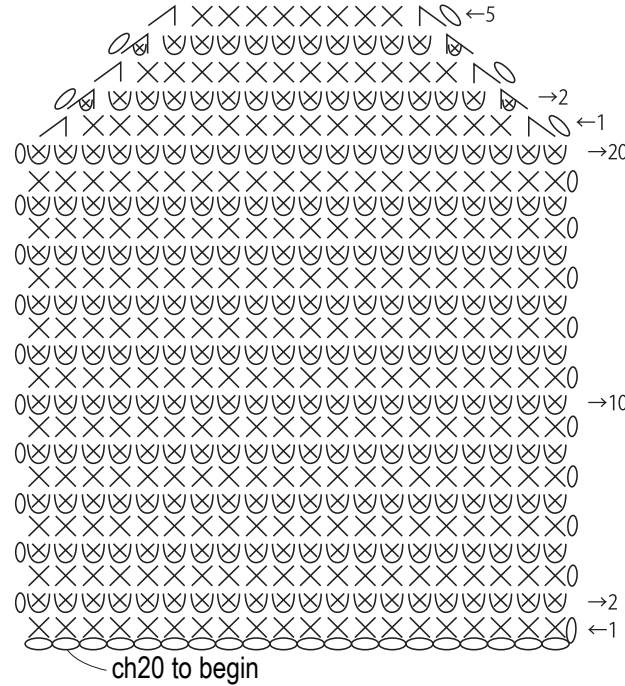
Body

3.0mm hook



Body: palm of hand (make 2)

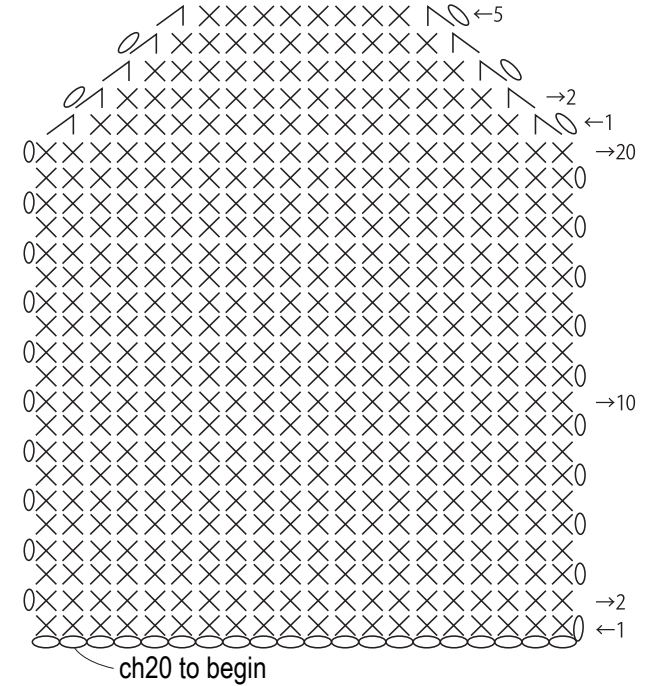
3.0mm hook, #17 vanilla beige




⊗ = sc loop stitch
 ⊕ = work 2 sc loop stitches together

Body: back of hand (make 2)

3.0mm hook, #22 black



Use this QR code on your smartphone to view a video about how to work the sc loop stitch.

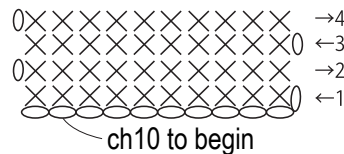


※To view on computer, search on the Pierrot Yarns website instead.

検索

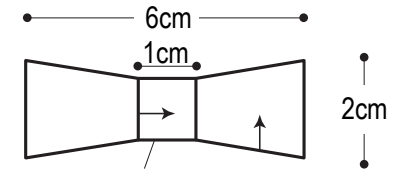
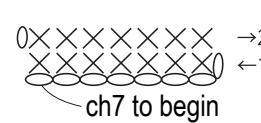
Ribbon

3.0mm hook



Ribbon "knot" section

3.0mm hook

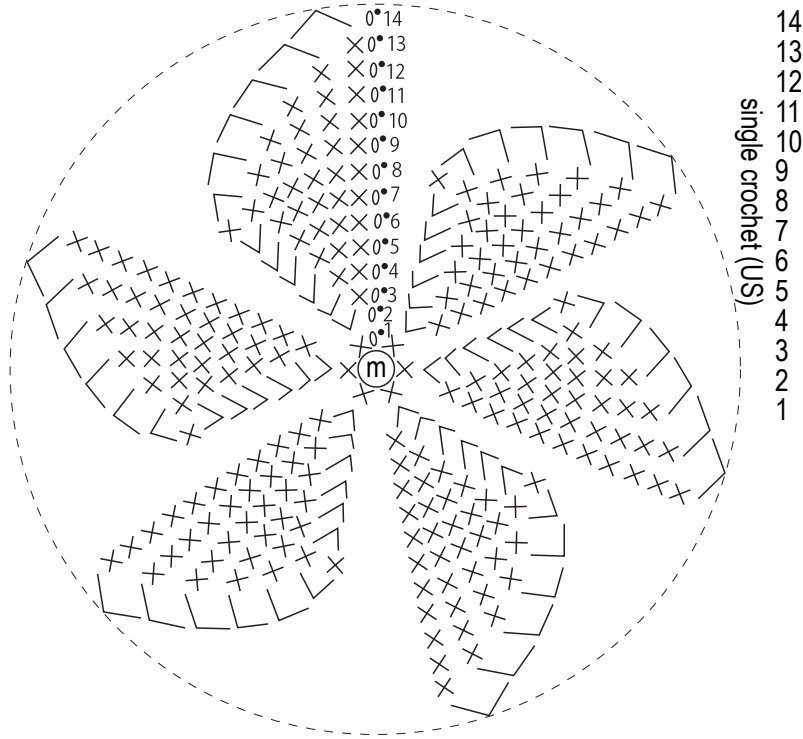


Seam both ends together with whipstitch on the back side.

Make 1 each in #6 red and #9 blue.

Head/face: make 2

3.5mm hook, #22 black

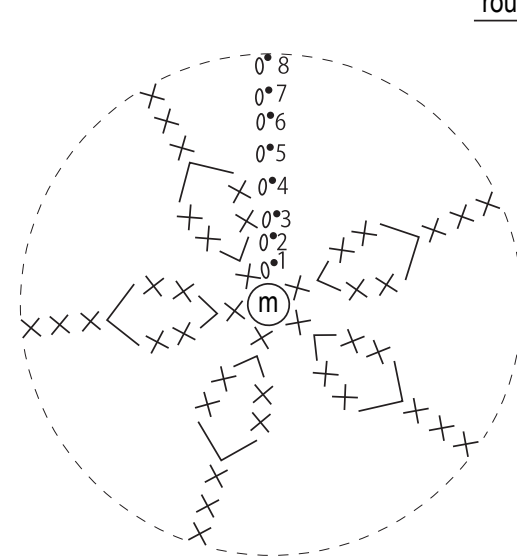


round no.	stitch count
14	6
13	12
12	18
11	24
10	30
9	36
8	42 (work even)
7	42
6	36
5	30
4	24
3	18
2	12
1	6

single crochet (US)
-6 sts per round
(Work into magic ring.)
+6 sts per round
(Work into magic ring.)

Paw: make 4

3.5mm hook, #22 black

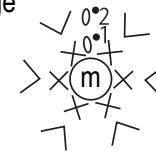


round no.	stitch count
8	5
7	5
6	5
5	5 (-5 sts)
4	10
3	10
2	10 (+5 sts)
1	5

single crochet (US)
work even
work even
(Work into magic ring.)

Pad of paw: make 4

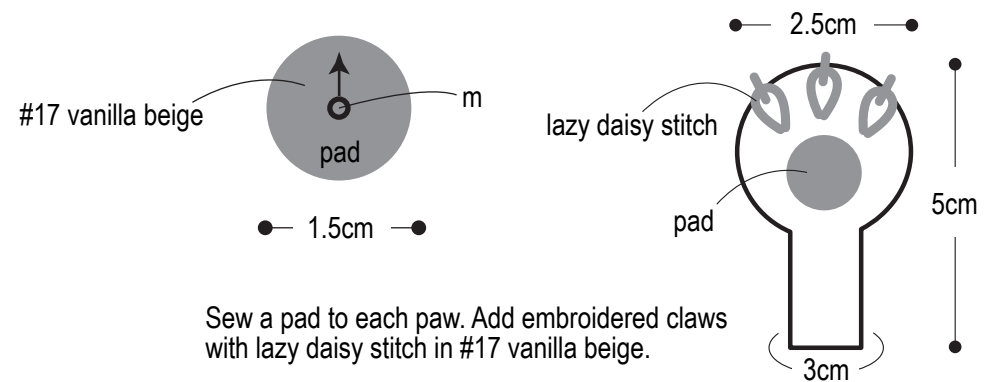
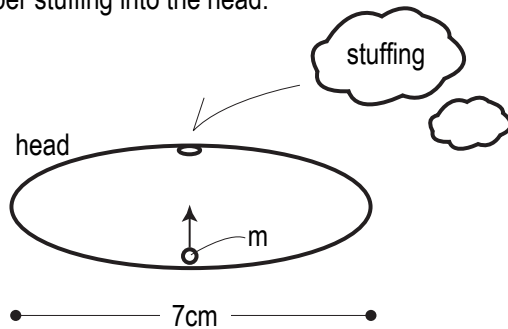
3.5mm hook, #17 vanilla beige



round no.	stitch count
2	12 (+6 sts)
1	6

SC
(Work into magic ring.)

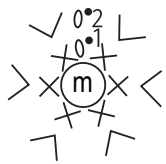
Insert some polyfiber stuffing into the head.



Sew a pad to each paw. Add embroidered claws with lazy daisy stitch in #17 vanilla beige.

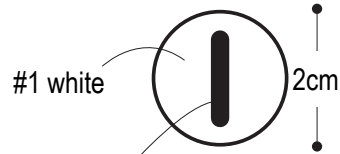
Eye: make 4

3.0mm hook



round no.	stitch count
SC 2	12 (+6 sts)
1	6

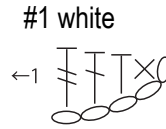
(Work into magic ring.)



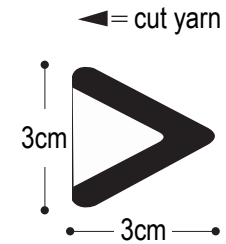
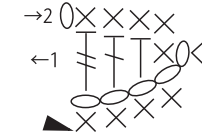
Embroider eye with straight stitch using #22 black.

Ear: make 4

3.5mm hook



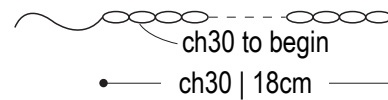
#22 black



When knitting second row with color #22 black, crochet together with white piece (worked in color #1 white) so that wrong sides face each other.

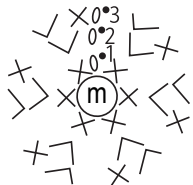
Loop: make 2

3.5mm hook, #22 black



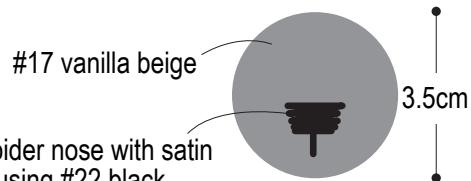
Nose: make 2

3.5mm hook



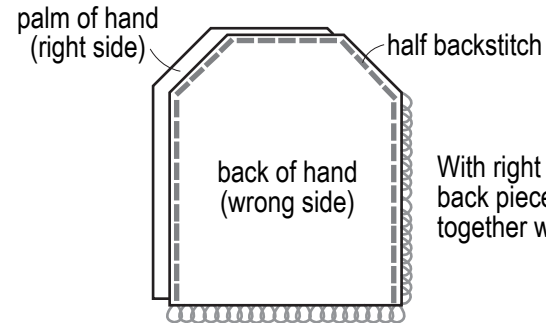
round no.	stitch count
SC 3	18
2	12
1	6

+6 sts per round
(Work into magic ring.)



Embroider nose with satin stitch using #22 black.

Finishing



With right sides of palm and back pieces facing, seam together with half backstitch.

Turn right-side out.

Sew eyes, nose, and ears to head. Sew head, paws, and ribbon to body of mitt. Fasten ends of loop to palm side and back of hand side, respectively.



Attach head.

