

# 212w-26 Cowichan Snowflake Vest



## Suggested yarn:

- Pierrot Yarns Nordic Super Bulky [100% wool; 58 yds/53m per 2.82 oz./80g skein];
  - color #51 ivory, 1 skein [75g]
  - color #52 greige, 2 skeins [110g]
  - color #55 wine red, 1 skein [45g]
  - color #57 navy, 6 skeins [480g]

## Tools/Notions:

- 8.0mm (US 11) and 10.0mm (US 15) knitting needles or sizes necessary to achieve gauge

## Finished measurements:

- chest 99cm/38.98"
- cross back width 40cm/15.75"
- length 64.5cm/25.39"

## Gauge (10cm/4" square):

- pattern stitch (colorwork): 12 sts and 14 rows

*Gauge may vary according to individual knitting style. Change needle size if necessary to achieve gauge. Alternatively, rework pattern with your own gauge measurements.*

## Knitting Tips

※Note: Large colorwork motifs are worked in Cowichan style without carrying the yarn across the back for the entire row.

**Body & collar:** ?Cast on with long-tail cast-on method. Work in k1p1 ribbing, then work in colorwork pattern. Work front bands, armhole edging, and collar in garter stitch at the same time as you knit the main body pieces. Work buttonholes in left front band. For back collar, pick up stitches from back neckline and work in garter stitch.

**Finishing:** Seam shoulders with crochet slip stitch. Seam sides with mattress stitch THROUGH ONE LOOP ONLY. Align front and back collar as shown, then seam with stitches-to-rows mattress stitch.

## Abbreviations:

BO = bind off

CO = cast on

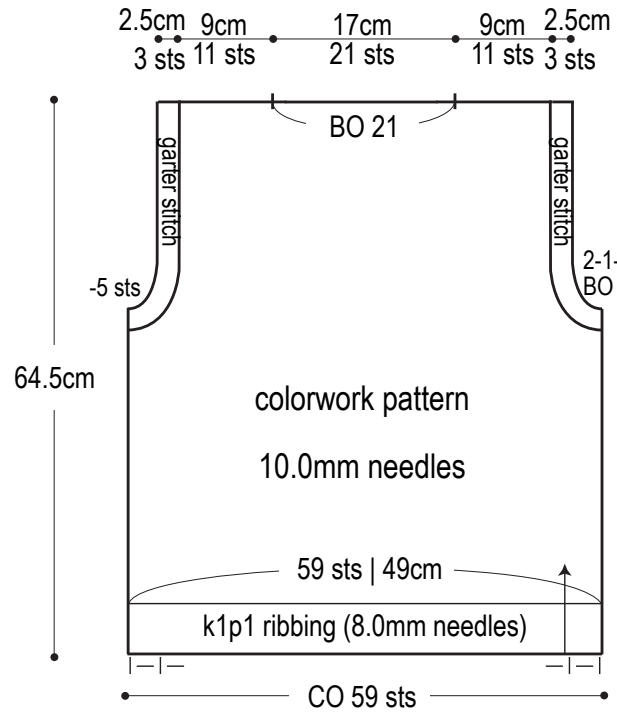
OH = on hold (place on stitch holder)

PU = pick up

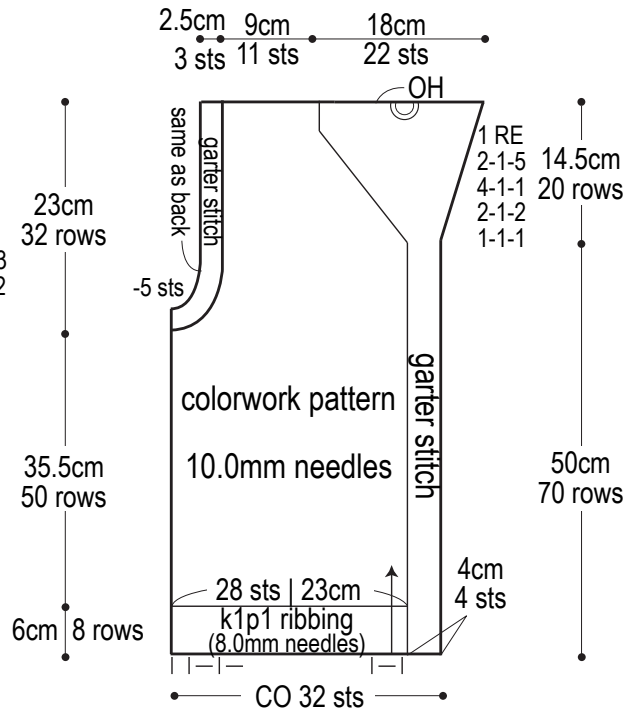
RE = row(s) even

### = rows-stitches-times

## Back



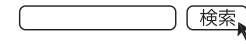
## Right front



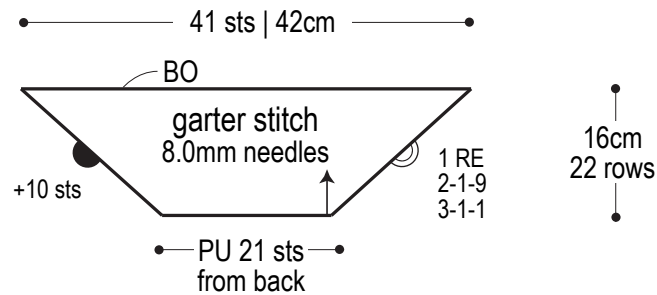
Use this QR code on your smartphone to view a video about how to work the Cowichan-style colorwork design.



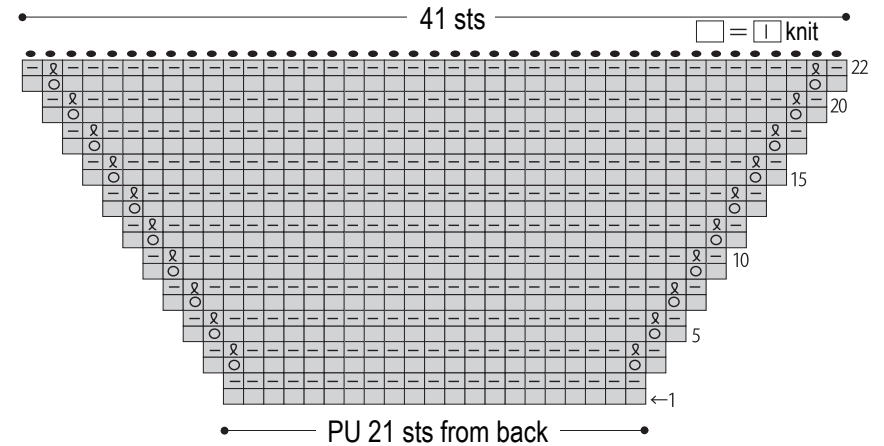
※To view on computer, search on the Pierrat Yarns website instead.



## Back collar



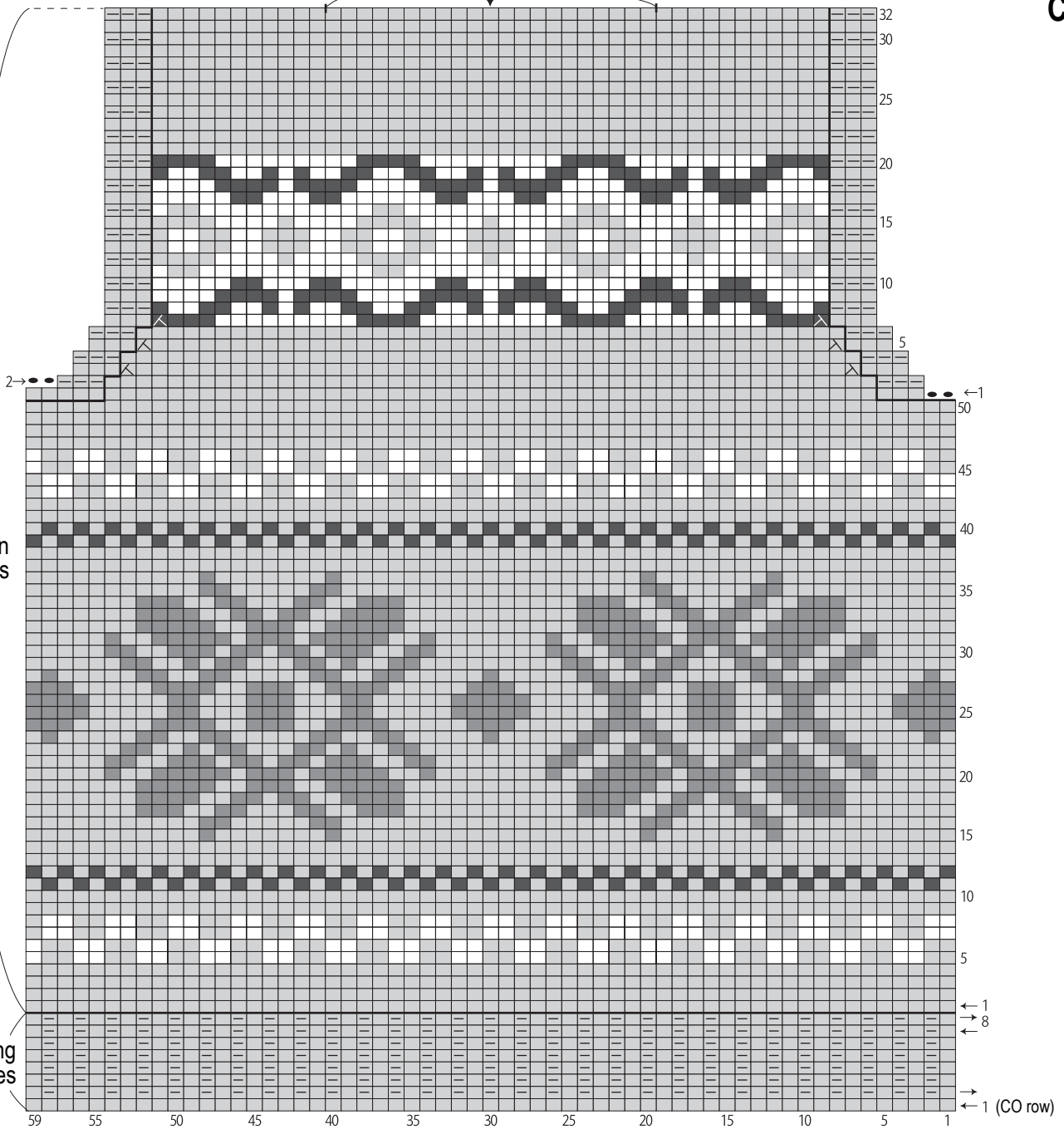
## Back collar (8.0mm needles)



# Back

center back collar  
BO 21 sts

□ = I knit

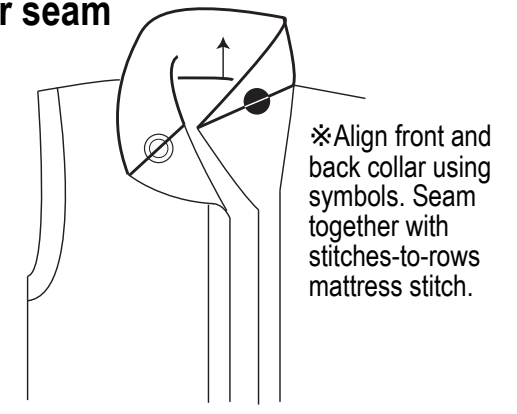


colorwork pattern  
10.0mm needles

k1p1 ribbing  
8.0mm needles

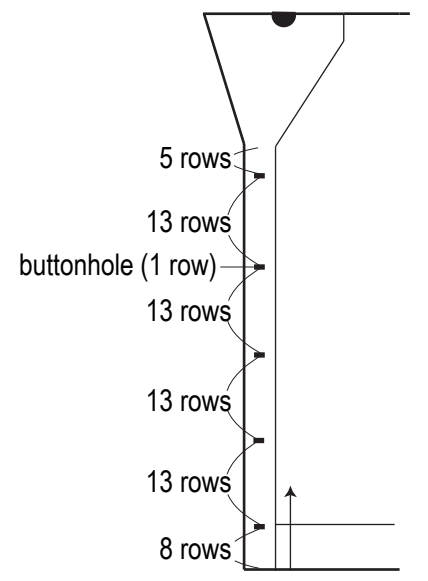
center back

# Collar seam



key to colors {  
 ■ = #52 greige  
 ■ = #55 wine red  
 □ = #51 ivory  
 ■ = #57 navy

# Buttonholes



# Right front

shoulder:  
14 sts

collar: 22 sts

# Left front

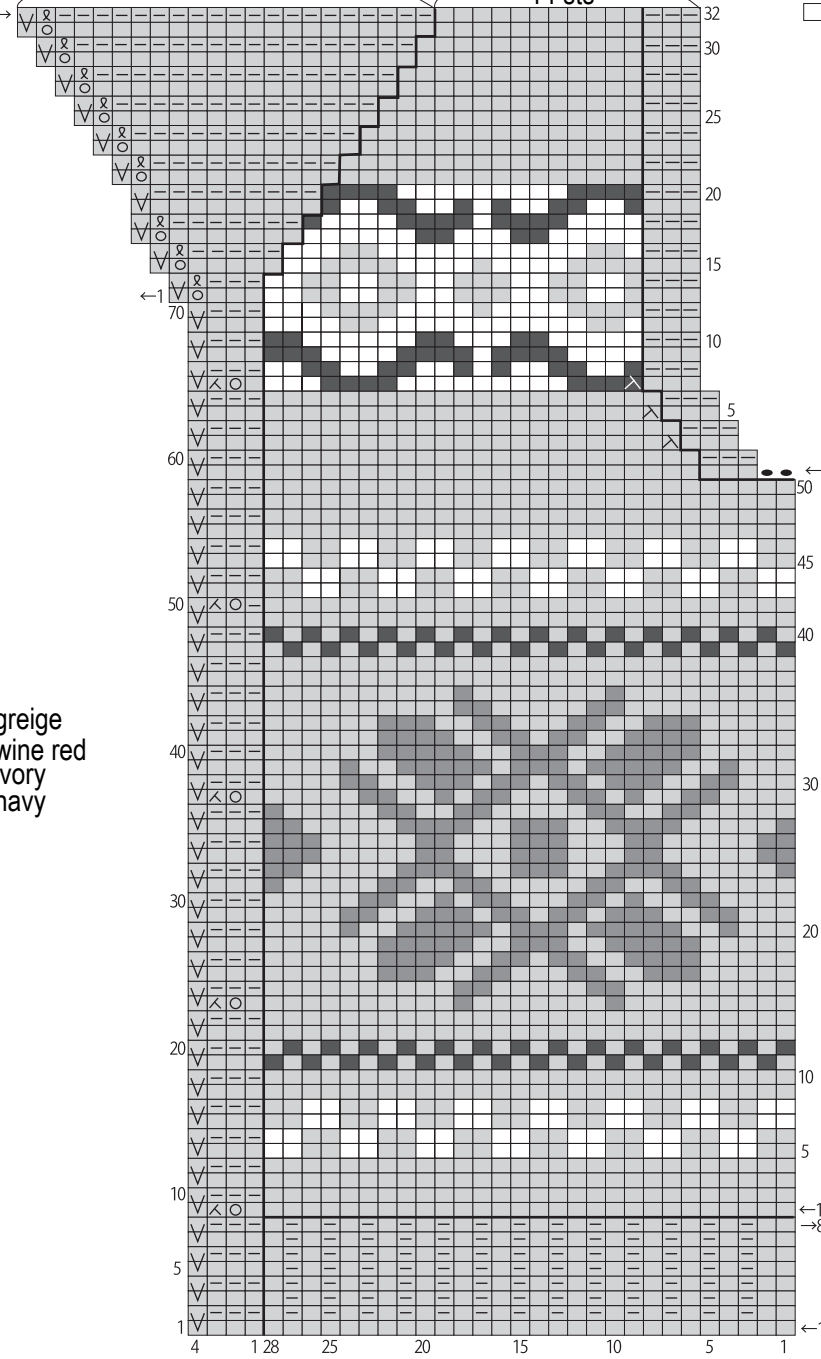
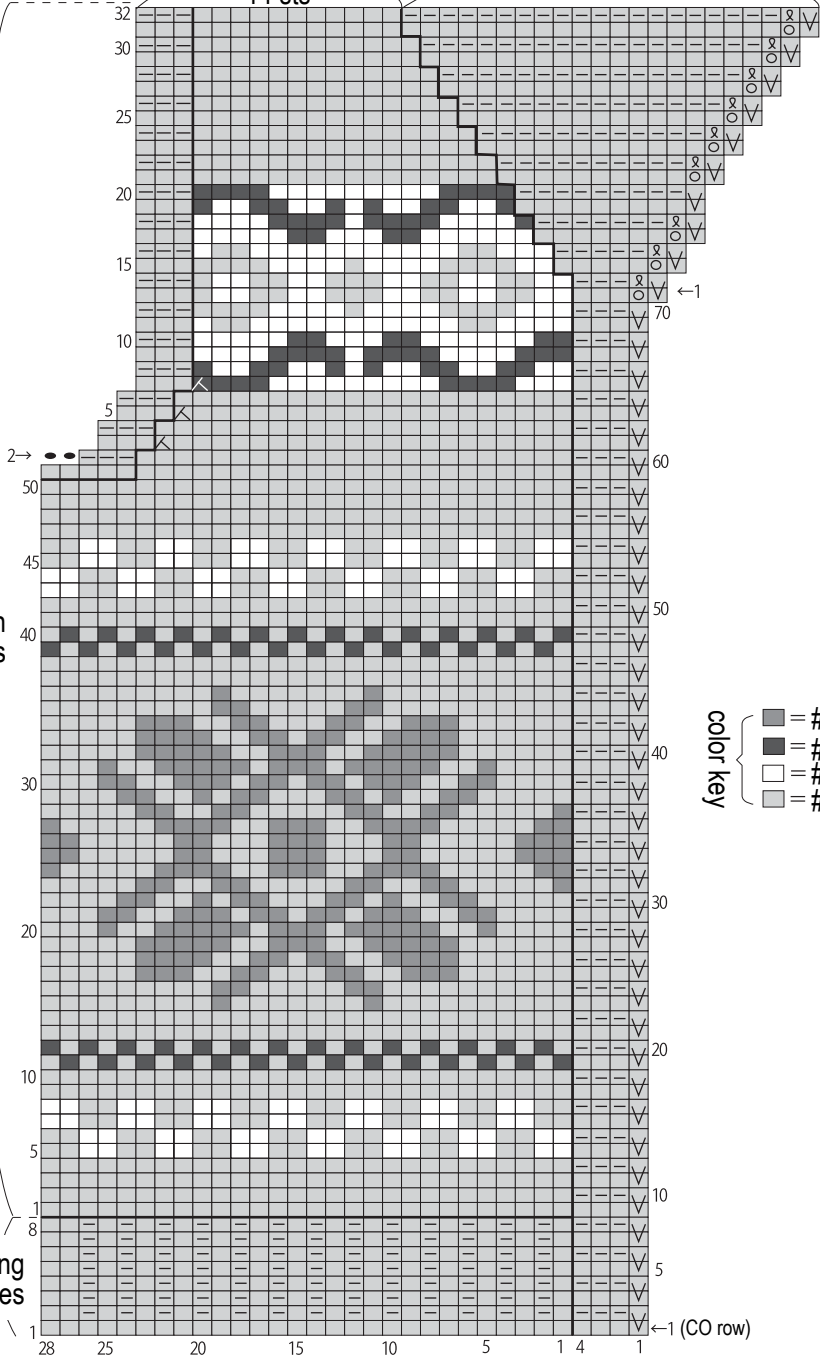
collar: 22 sts

shoulder:  
14 sts

□ = □ knit

colorwork design  
10.0mm needles

k1p1 ribbing  
8.0mm needles



color key

- = #52 greige
- = #55 wine red
- = #51 ivory
- = #57 navy