

212w-23 2-way Gaiter Hat



Suggested yarn:

- Pierrot Yarns Fine Merino [100% merino wool; 103 yds/94m per 1.06 oz./30g skein];
 - adult size:
 - color #201 off-white, 2 skeins [35g]
 - color #203 deep blue, 1 skein [25g]
 - color #205 deep navy, 1 skein [15g]
 - color #214 crimson, 1 skein [15g]
 - children's size:
 - color #201 off-white, 1 skein [25g]
 - color #203 deep blue, 1 skein [25g]
 - color #205 deep navy, 1 skein [10g]
 - color #214 crimson, 1 skein [10g]

Tools/Notions:

- 3.3mm (approx. US 3) and 3.6mm (approx. US 4 or 5) double-pointed knitting needles or sizes necessary to achieve gauge
- 3.0mm (approx. US C or D) crochet hook or size necessary to achieve gauge

Finished measurements:

- adult size:
 - head circumference 61cm/24.02"
 - length 24.5cm/9.65"
- children's size:
 - head circumference 52cm/20.47"
 - length 22cm/8.66"

Gauge (10cm/4" square):

- stranded pattern stitch: 23 sts and 26.5 rounds

Gauge may vary according to individual knitting style. Change needle size if necessary to achieve gauge. Alternatively, rework pattern with your own gauge measurements.

Knitting Tips

2-way gaiter hat: Cast on with long-tail cast-on method. Work in k1p1 ribbing followed by k2p2 ribbing and stranded pattern stitch. Refer to chart for color sequences. Bind off in pattern.

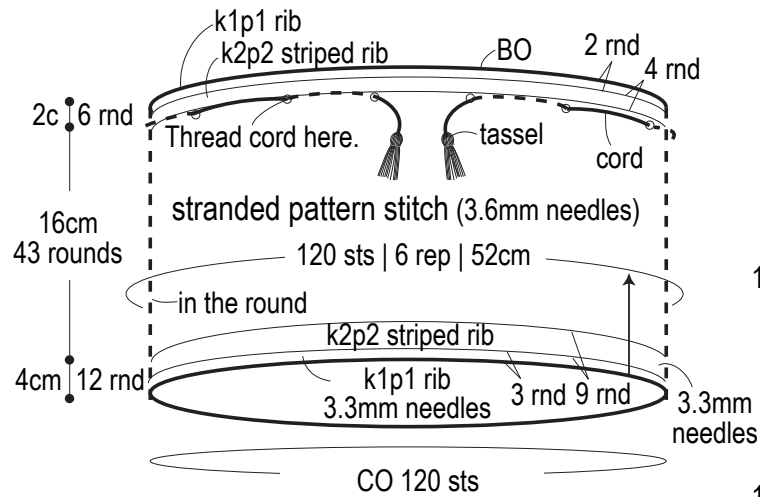
Finishing: Crochet cord and thread through hat where shown. Make tassels and sew to ends of cord.

Abbreviations:

BO = bind off
CO = cast on
rep = repeat(s)
rnd = round(s)

Children's version

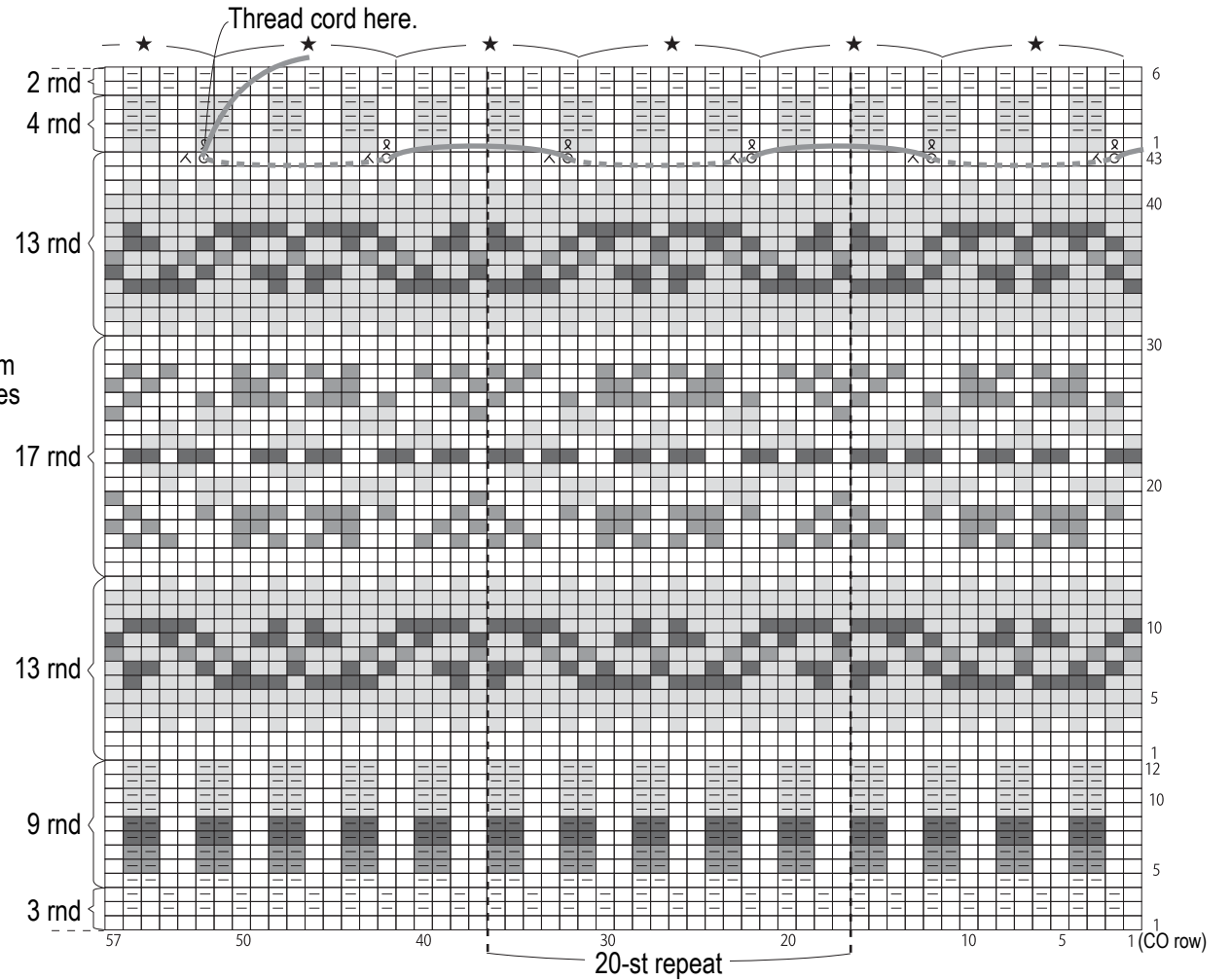
※Use 3.3mm needles for both types of ribbing.
Use double-pointed needles throughout.



- = #201 off-white
- = #203 deep blue
- = #205 deep navy
- = #214 crimson

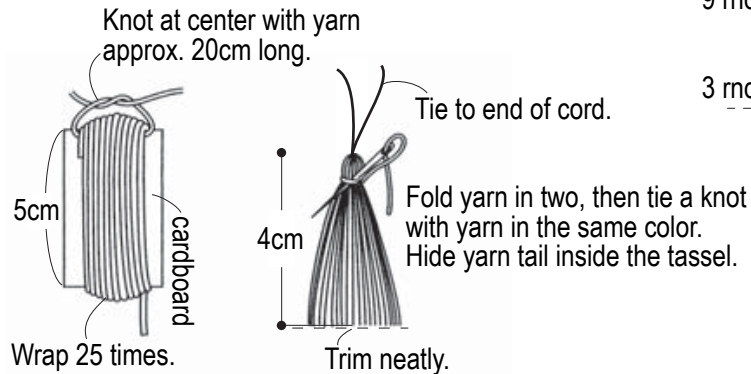
Children's version

★ = 10 sts (work 12 times total)

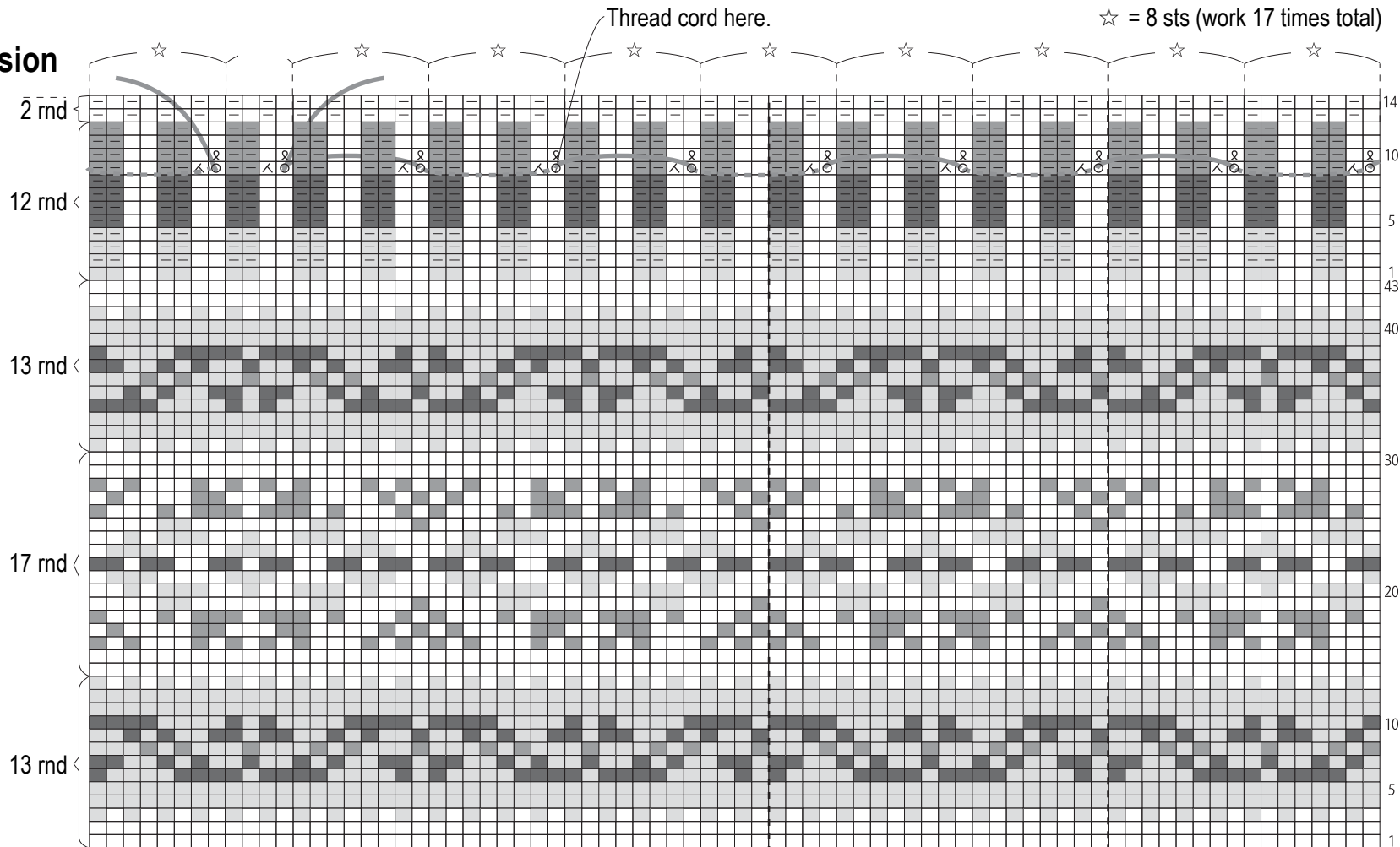


Tassel (make 2)

#203 deep blue

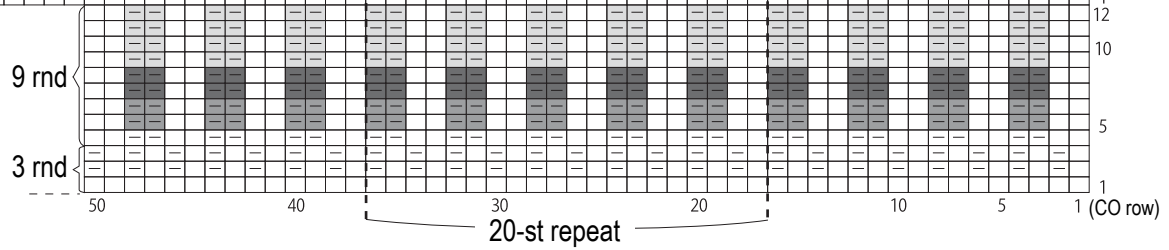
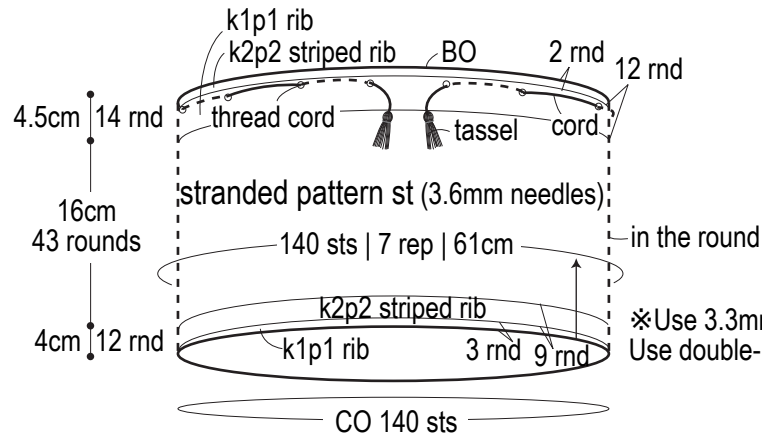


Adult version



☆ = 8 sts (work 17 times total)

Adult version



※ Use 3.3mm needles for both types of ribbing. Use double-pointed needles throughout.

Cord: make 1 per hat (3.0mm hook)

