

212w-22 English Rib Scarf



Suggested yarn:

- ladies' size: Filatura Botto Poala Aspen 3 [100% cashmere; 125 yds/115m per 0.88 oz./25g skein]; color #06 light beige, 4 skeins [95g]
- children's size: Malabrigo Yarn Merino Worsted [100% merino wool; 210 yds/192m per 3.53 oz./100g hank]; color #93 fuchsia, 2 hanks [130g]

Tools/Notions:

- 10.0mm (US 15) knitting needles or size necessary to achieve gauge
- 4.0mm (US G) crochet or size necessary to achieve gauge

Finished measurements:

- | | |
|-----------------------|--|
| • ladies' size: | • children's size: |
| • width 19cm/7.48" | • width 16cm/6.30" |
| • length 177cm/69.69" | • length (including fringe) 146cm/57.48" |

Gauge (10cm/4" square):

- English rib: 8 sts and 19 rows

Gauge may vary according to individual knitting style. Change needle size if necessary to achieve gauge. Alternatively, rework pattern with your own gauge measurements.

Knitting Tips

※Work body of both scarves with 2 strands of yarn held together. Work edging of ladies' version with just 1 strand of yarn.

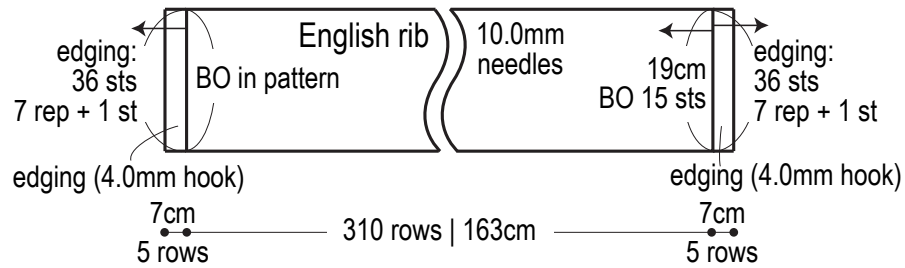
Body of scarf: Cast on with long-tail cast-on method. Work in English rib. Bind off in pattern. For ladies version, work edging on each end. For children's version, attach fringe to each end.

Abbreviations:

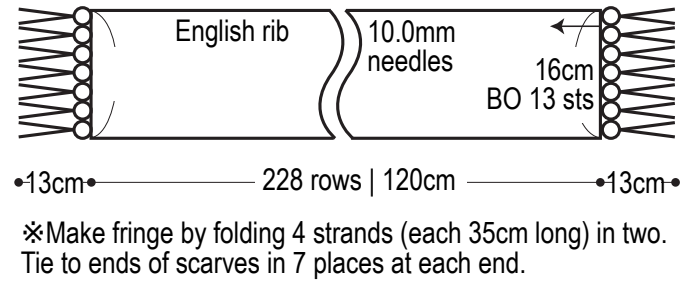
BO = bind off
CO = cast on
rep = repeat(s)

Body of scarf (2 strands)

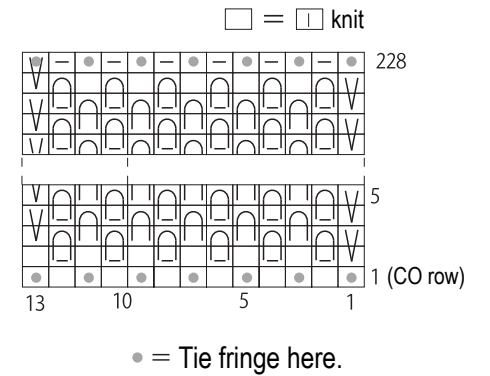
Ladies' version



Children's version



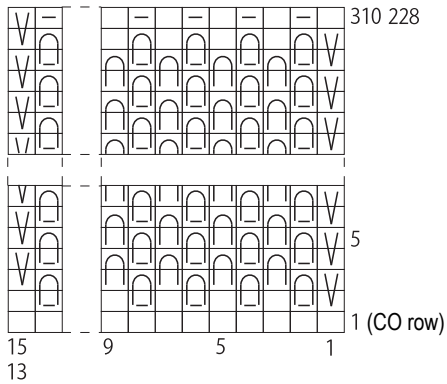
Fringe placement (children's size)



English rib

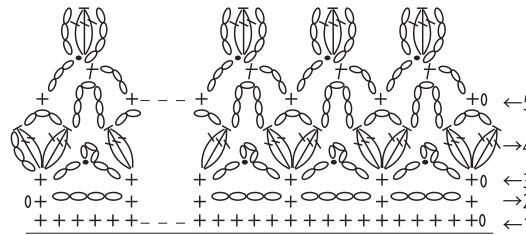
10.0mm needles

□ = □ knit




- ∩ = knit in stitch one row below
- ∪ = purl in stitch one row below
- ∇ = slip stitch

Ladies' edging (1 strand, 4.0mm hook)



Use this QR code on your smartphone to view a video about how to work English rib.



※To view on computer, search on the Pierrot Yarns website instead.

検索