

212w-19 Flower Receiving Blanket



Suggested yarn:

- Pierrot Yarns Fine Merino [100% merino wool; 103 yds/94m per 1.06 oz./30g skein];
 - color #202 wisteria, 2 skeins [50g]
 - color #208 aqua green, 3 skeins [70g]
 - color #209 wasabi, 3 skeins [65g]
 - color #212 old rose, 2 skeins [50g]
 - color #215 light terracotta, 4 skeins [120g]
 - color #216 apricot, 3 skeins [80g]
 - color #217 light almond green, 2 skeins [40g]
 - color #222 pink, 6 skeins [175g]

Tools/Notions:

- 3.0mm (approx. US C or D) crochet hook or size necessary to achieve gauge

Finished measurements:

- 96cm/37.80" square

Gauge:

- Motifs A and B should each measure 11cm/4.33" along each side.

Gauge may vary according to individual crochet style. Change hook size if necessary to achieve gauge. Alternatively, rework pattern with your own gauge measurements.

Crochet Tips

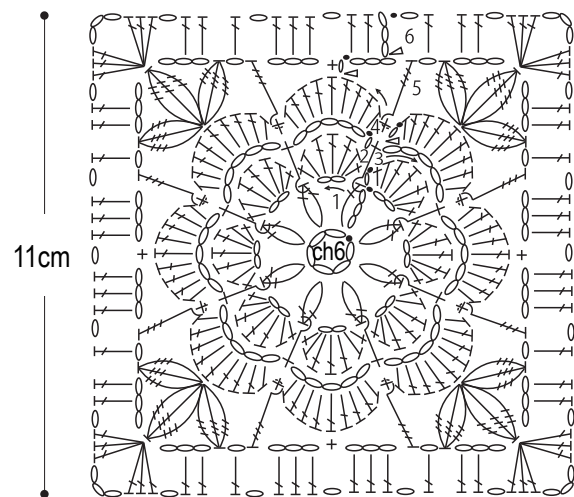
Motifs A and B: Begin motif A by working ch6 and joining into the round. Crochet motif in the round. Begin motif B by working ch4 and joining into the round. Crochet motif in the round. Referring to charts for color sequences and placement, crochet all required motifs. Starting from the second motif, join as you go on the final round. First make 4 pieces (each 4 squares wide and 4 squares tall), then seam these 4 large pieces together.

Finishing: Work edging in the round.

Abbreviations:

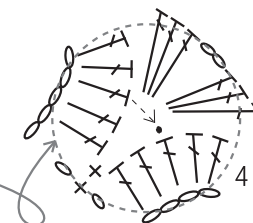
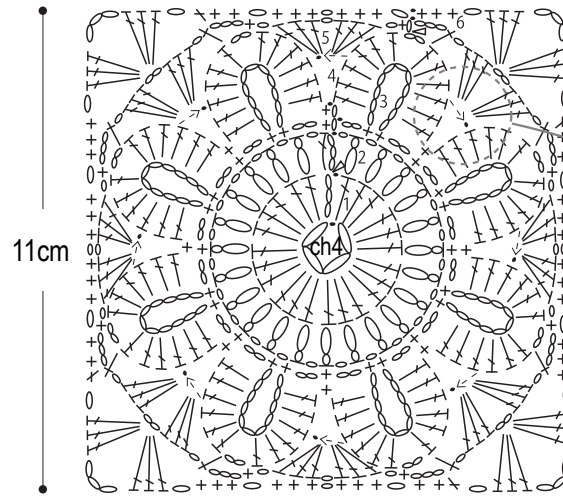
bp = back post ch = chain dc = double crochet (US) dtr = double treble crochet (US) fp = front post hdc = half double crochet (US) sc = single crochet (US)

Motif A (3.0mm hook)



※Work round 3 of motif A from the wrong side.

Motif B (3.0mm hook)



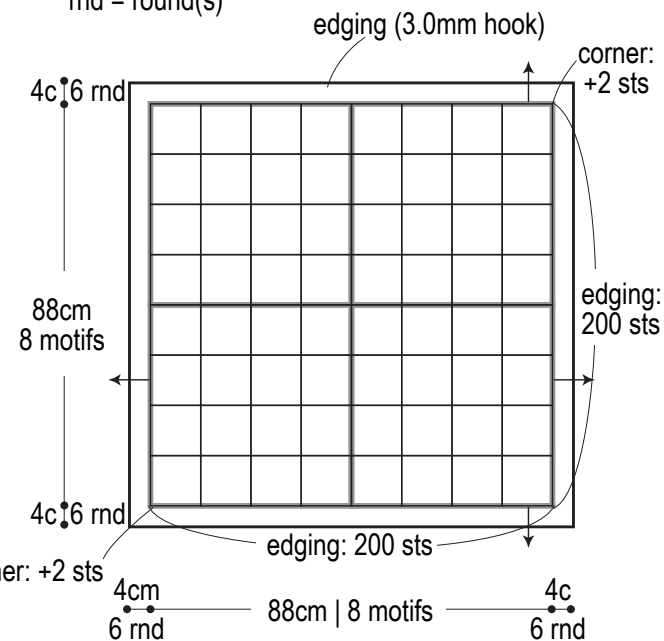
From --> dc, slip stitch into • dc.

Motif arrangement (16 squares)

A1 11cm	B1	A2	B2
11cm	B2	A3	B3
	A3	B1	A2
	B3	A1	B2
			A3

Finishing

rnd = round(s)



※Seam together in 4 panels of 16 squares each.

Motif A color sequences

round	Motif A1	Motif A2	Motif A3
6	#202 wisteria	#215 light terracotta	#222 pink
5	#217 light almond green	#209 wasabi	#208 aqua green
4	#222 pink	#216 apricot	#212 old rose
1-3	#202 wisteria	#215 light terracotta	#222 pink

- △ = join yarn
- ⊖ = 2-dc cluster stitch
- ⊕ = bp sc
- ⊗ = 3-dtr cluster stitch
- ⊘ = bp dtr
- ⊙ = 2-hdc puff stitch

Motif B color sequences

round	Motif B1	Motif B2	Motif B3
5-6	#208 aqua green	#209 wasabi	#212 old rose
2-4	#215 light terracotta	#216 apricot	#222 pink
1	#216 apricot	#215 light terracotta	#217 light almond green

Motif seaming method & edging

3.0mm hook

