

# G624SN Aurora 8 Cowl



## Suggested yarn:

- Filatura Botto Poala Aurora 8 [100% extra fine merino wool; 98 yds/90m per 1.76 oz./50g skein]; color #115 silver gray, 6 skeins [300g]

## Tools/Notions:

- 4.8mm (approx. US 8) knitting needles or size necessary to achieve gauge

## Finished measurements:

- width 32.5cm/12.80"
- length 136cm/53.54"

## Gauge (10cm/4" square):

- k1p1 ribbing: 20 sts and 21.5 rows

*Gauge may vary according to individual knitting style. Change needle size if necessary to achieve gauge. Alternatively, rework pattern with your own gauge measurements.*

## Knitting Tips

**Cowl:** Cast on with long-tail cast-on method. Work in k1p1 ribbing. Bind off in pattern.

**Finishing:** Align cast-on edge and bind-off edge. Seam with whipstitch, forming a loop.

## Abbreviations:

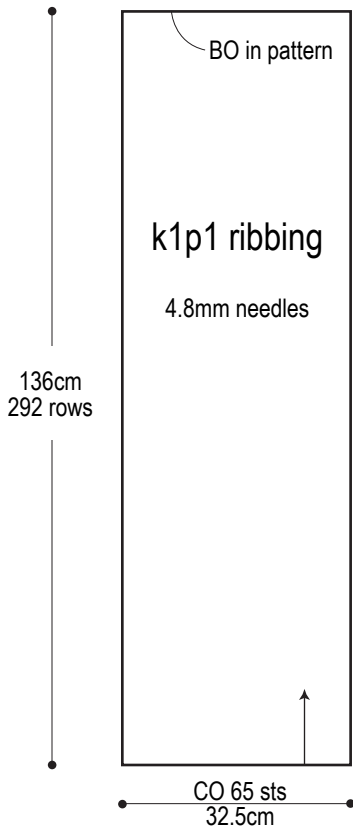
BO = bind off

CO = cast on

k = knit

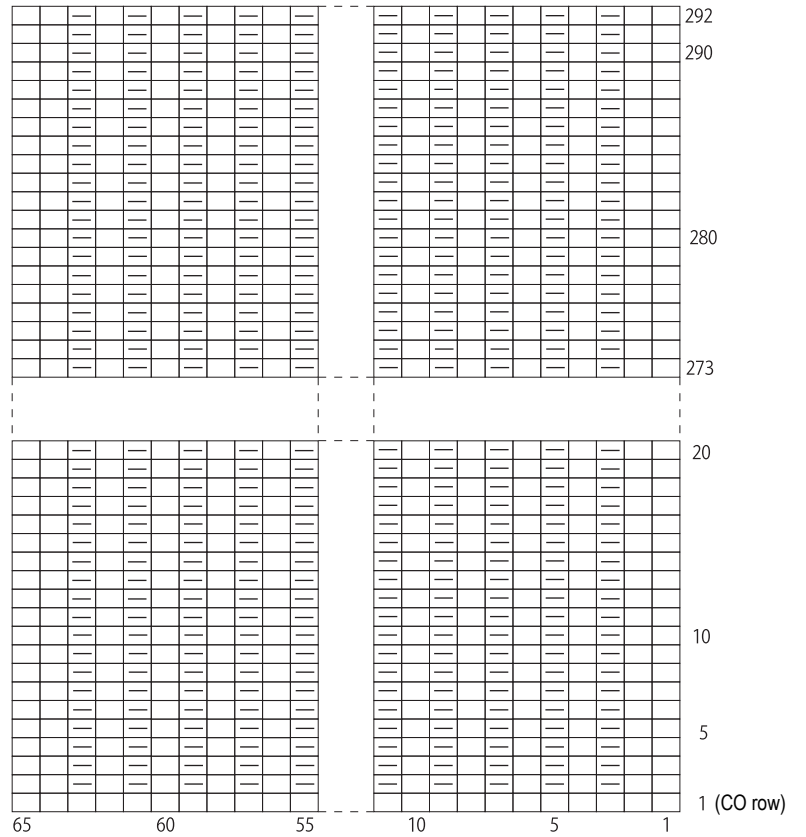
p = pur

# Cowl



## k1p1 ribbing (4.8mm needles)

□ = □ knit



## Finishing

