

212fw-36 Long Nordic Vest



Suggested yarn:

- ladies' version: Pierrot Yarns Nordic [100% wool; 131 yds/120m per 2.82 oz./80g skein]; color #04 dark brown, 6 skeins [410g]
- kids' version: Pierrot Yarns Foire DK [100% wool; 90 yds/82m per 1.41 oz./40g skein]; color #24 greige, 6 skeins [240g]

Tools/Notions:

- ladies' version: 4.8mm (approx. US 7) and 5.1mm (approx. US 8) straight knitting needles or sizes necessary to achieve gauge - you will need double-pointed needles in smaller size as well
- kids' version: 3.9mm (approx. US 6) and 4.2mm (approx. US 7) straight knitting needles or sizes necessary to achieve gauge - you will need double-pointed needles in smaller size as well
- both versions: cable needle
- 3 buttons: ladies' version 25mm/0.98" diameter; kids' version 21mm/0.83" diameter

Finished measurements:

- | | |
|--------------------------------|--------------------------------|
| • ladies' version: | • kids' version: |
| • bust 94cm/37.01" | • bust 71.5cm/28.15" |
| • cross back width 38cm/14.96" | • cross back width 29cm/11.42" |
| • length 75.5cm/29.72" | • length 47.5cm/18.70" |

Gauge (10cm/4" square):

- | | |
|--|--|
| • pattern stitch B (5.1mm needles): 16.5 sts and 21 rows | • pattern stitch B (4.2mm needles): 16.5 sts and 21 rows |
| • reverse stockinette stitch (5.1mm needles): 14 sts and 21 rows | • reverse stockinette stitch (4.2mm needles): 14 sts and 21 rows |

Gauge may vary according to individual knitting style. Change needle size if necessary to achieve gauge. Alternatively, rework pattern with your own gauge measurements.

Knitting Tips

※Note that the instructions for kids' version are the same as the ladies' version, changing only the yarn and needle sizes.

Back & front body: Cast on with long-tail cast-on method. Work in pattern stitch A, then change needle size and work pattern stitch B and reverse stockinette stitch. Work front in pattern stitch A, working buttonbands at the same time with buttonholes on the right band. To make pocket, work 17 sts where indicated with waste yarn. When picking these sts up later, work into back of the 17 waste yarn stitches.

Pockets: Pick up stitches from stitch holder; work mouth of pocket in garter stitch. Pick up live stitches from provisional cast-on edge; work back of pocket in stockinette stitch. Seam back of pocket to wrong side of body. Seam each end of mouth of pocket to right side of body using mattress stitch.

Finishing: Seam shoulders with crochet slip stitch seam. Seam sides with mattress stitch. Pick up stitches around armholes; work edging in garter stitch in the round. When finished, bind off on purl row. Fasten buttons to body.

Collar: Pick up stitches around back and front neckline; knit collar as instructed. When finished, bind off on purl row.

Abbreviations:

BO = bind off CO = cast on PU = pick up RE = row(s) even #-#-# = rows-stitches-times

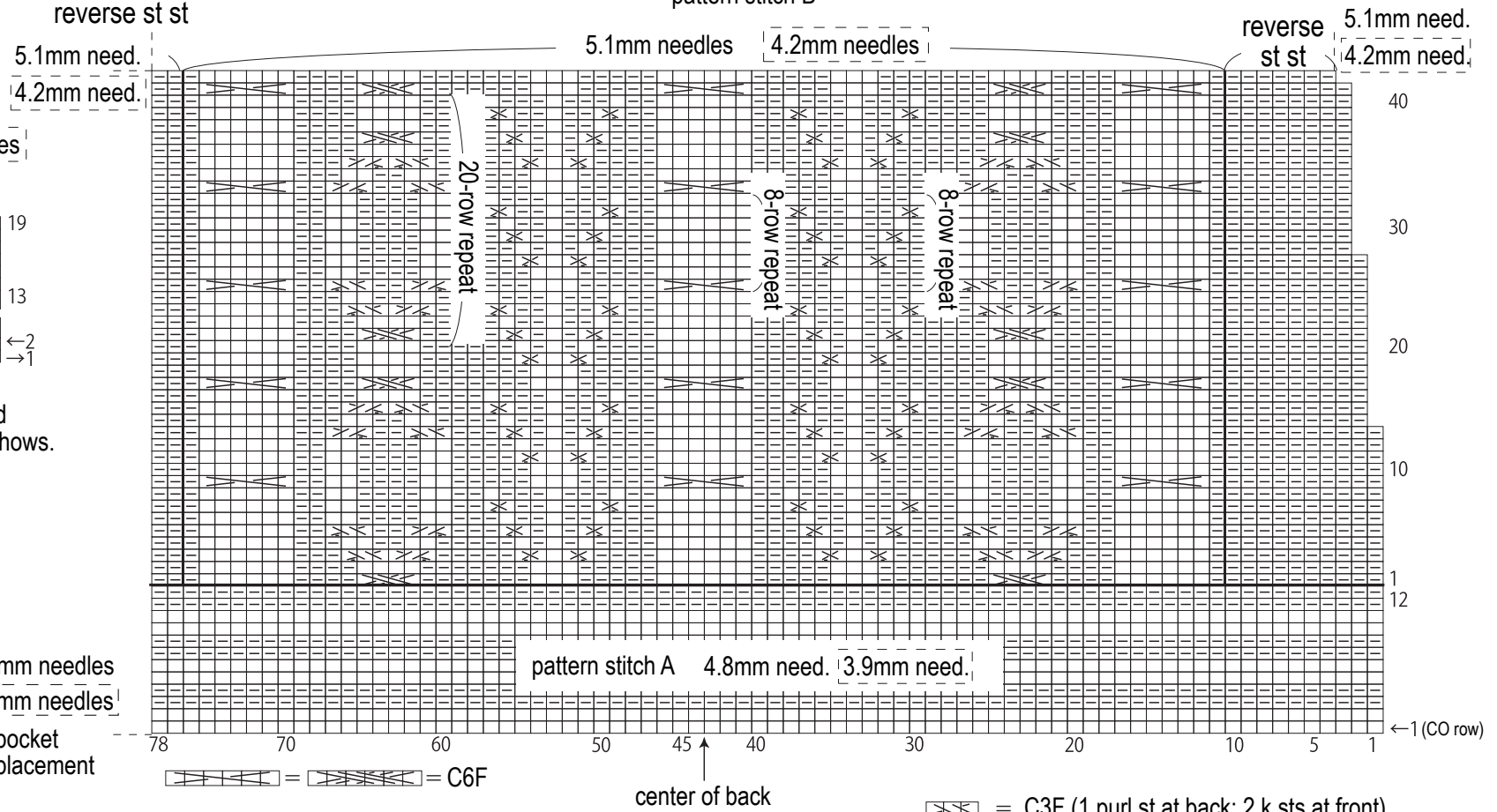
= kids' size

Otherwise, assume ladies' size.

If only one set of instructions is given, it refers to both sizes.

 = knit

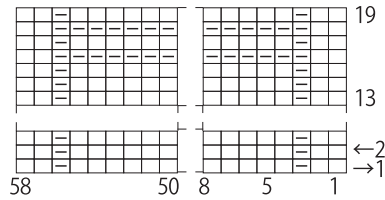
Back body



Collar

5.1mm needles 4.2mm needles

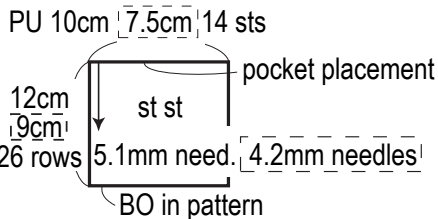
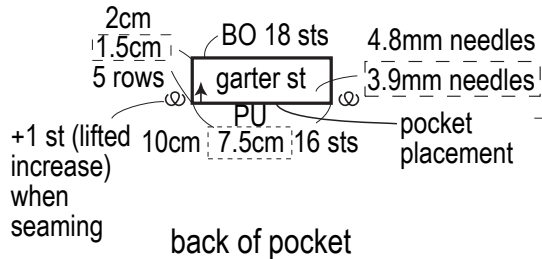
 = knit



*Work such that when you fold down the collar, the right side shows.

Pocket

mouth of pocket



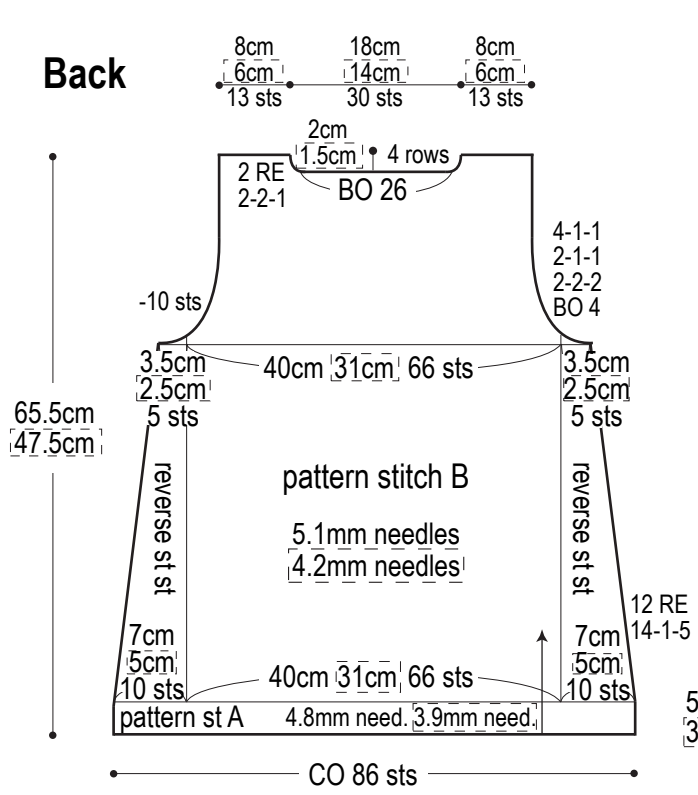
pattern stitch A 4.8mm need. 3.9mm need.

 = = C6F

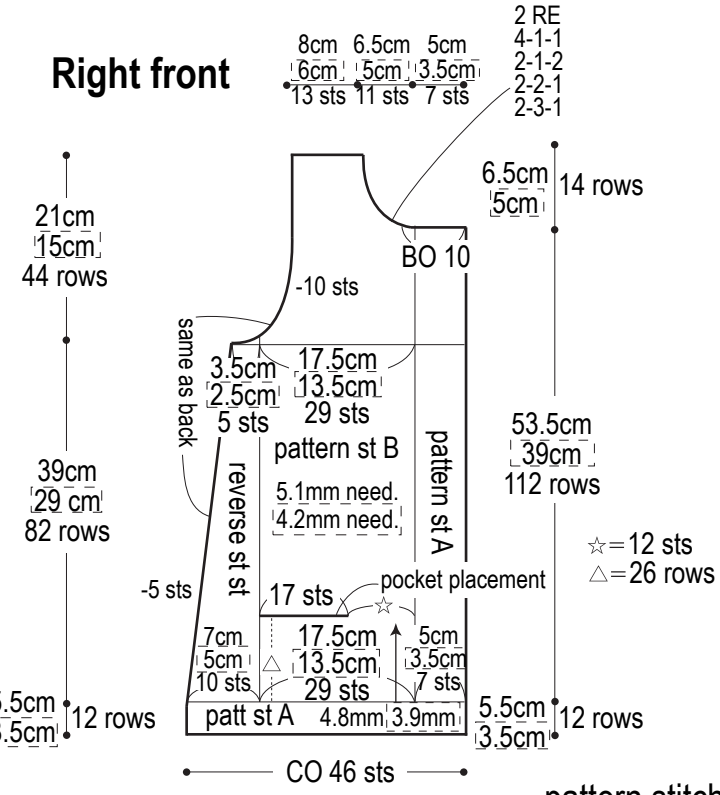
center of back

 = C3F (1 purl st at back; 2 k sts at front)
 = C3B (2 k sts at front, 1 purl st at back)

Back



Right front

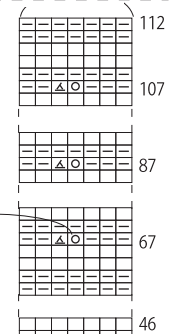


ladies' size kids' size

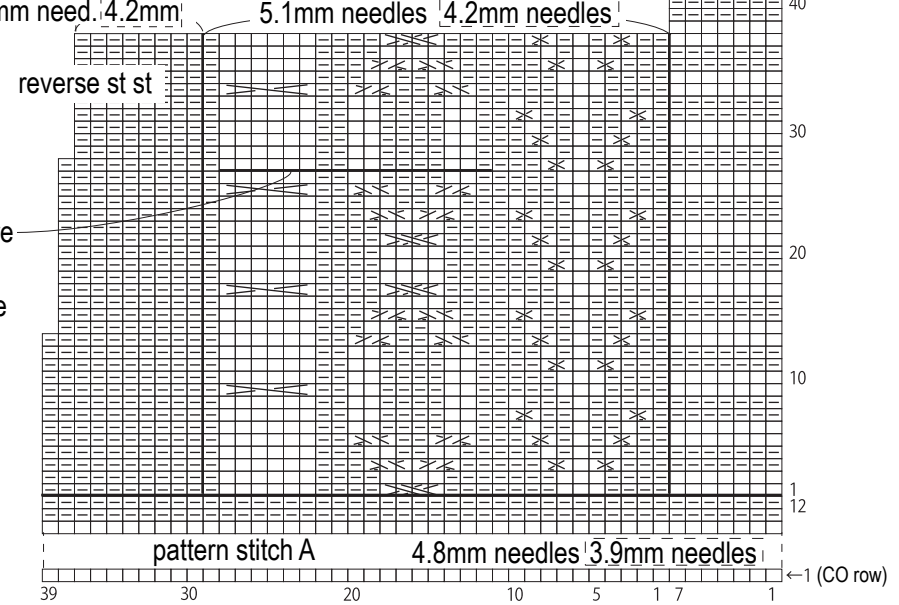
Right front & buttonholes

pattern stitch A

5.1mm needles
4.2mm needles



pattern stitch B



Finishing

※Reverse shaping of right front for left front, but retain direction of cable crossings.
Work buttonholes only in right front.

